

SHFTY FIVE ARRIVAL (RNAV)

FORT MYERS, FLORIDA

ARRIVAL ROUTE DESCRIPTION

CYNTA TRANSITION (CYNTA.SHFTY5)
HIBAC TRANSITION (HIBAC.SHFTY5)

From SHFTY on track 183° to WRTRS, then on track 161° to MAZZY, then on track 161° to MOEMO, then on track 160° to LBV VORTAC, thence....

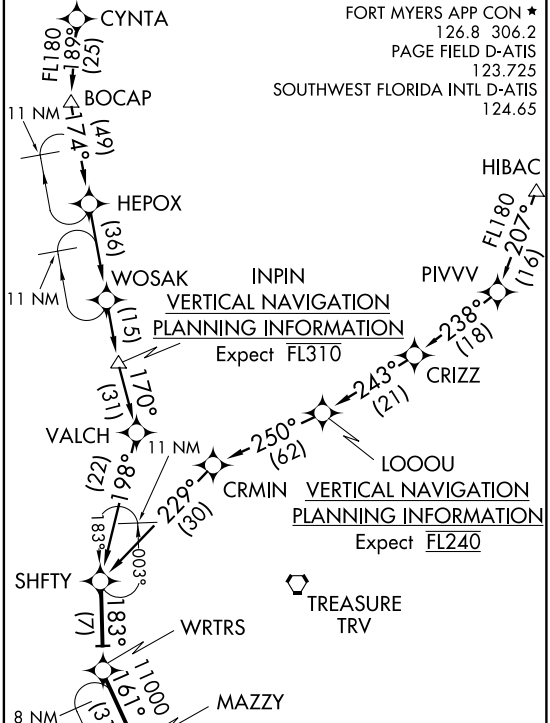
....Landing KRSW Rwy 6 and KFMY: From LBV VORTAC on track 186° to IRNIE, then on track 238° to WYCOF, then on track 238° to PONTY, then on heading 240° or as assigned by ATC. Expect RADAR vectors to final approach course.

....Landing KRSW Rwy 24: From LBV VORTAC on heading 228°. Expect RADAR vectors to final approach course.

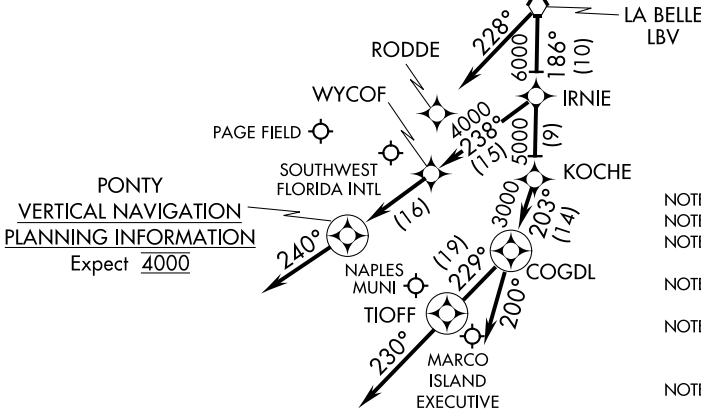
....Landing KAPF: From LBV VORTAC on track 186° to IRNIE, then on track 186° to KOCHE, then on track 203° to COGDL, then on track 229° to TIOFF, then on heading 230°. Expect RADAR vectors to final approach course.

....Landing KMKY: From LBV VORTAC on track 186° to IRNIE, then on track 186° to KOCHE, then on track 203° to COGDL, then on heading 200°. Expect RADAR vectors to final approach course.

FORT MYERS APP CON ★
126.8 306.2
PAGE FIELD D-ATIS
123.725
SOUTHWEST FLORIDA INTL D-ATIS
124.65



MOEMO
VERTICAL NAVIGATION
PLANNING INFORMATION
KRSW Landing Rwy 6 Expect 10000
KRSW Landing Rwy 24 Expect 10000 250K



- NOTE: RADAR required.
- NOTE: RNAV 1.
- NOTE: DME/DME/IRU or GPS required.
- NOTE: Turbojet and turboprop aircraft only.
- NOTE: Aircraft landing KAPF: Expect RADAR vectors prior to TIOFF.
- NOTE: For non-GPS equipped aircraft, LBV and RSW must be operational.

NOTE: Chart not to scale.

SHFTY FIVE ARRIVAL (RNAV)

FORT MYERS, FLORIDA

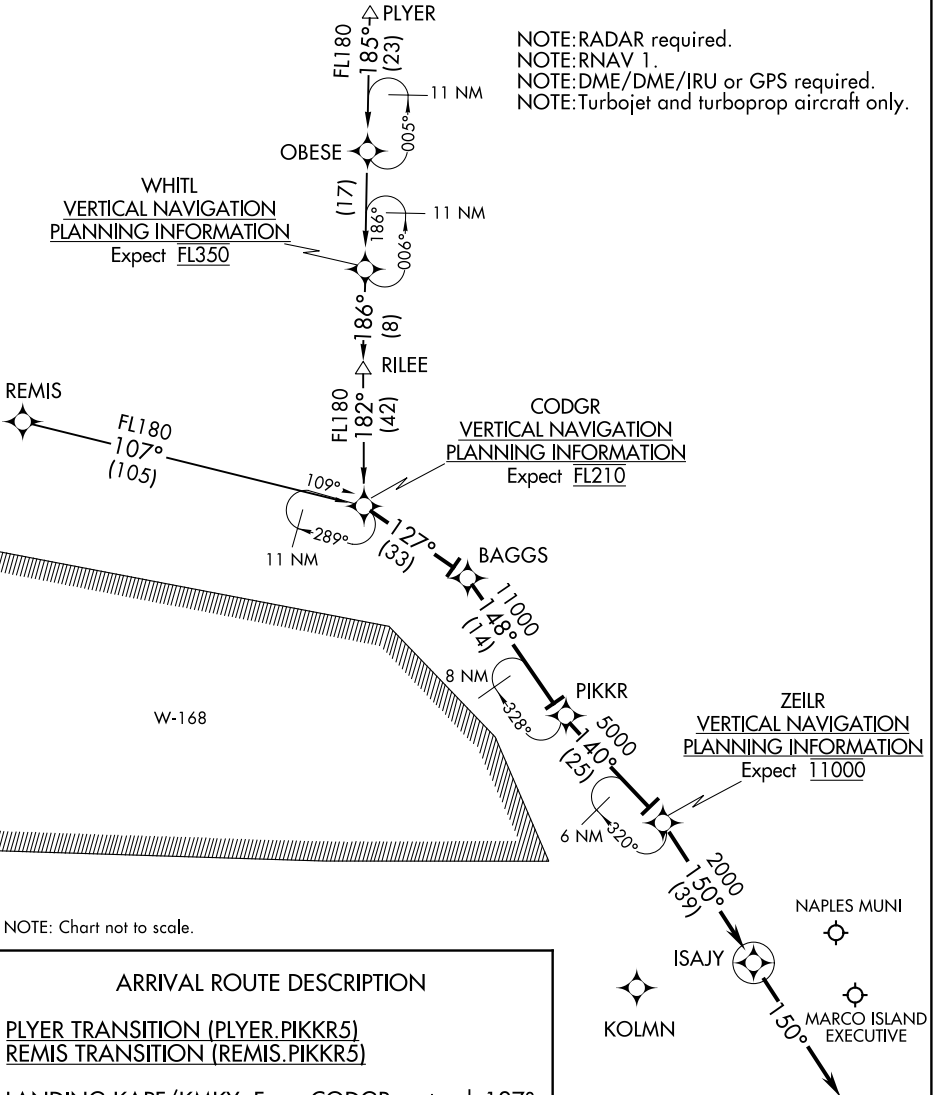
★ FORT MYERS APP CON
125.15 306.2
NAPLES MUNI ATIS
134.225

NOTE: RADAR required.
NOTE: RNAV 1.
NOTE: DME/DME/IRU or GPS required.
NOTE: Turbojet and turboprop aircraft only.

WHITL
VERTICAL NAVIGATION
PLANNING INFORMATION
Expect FL350

CODGR
VERTICAL NAVIGATION
PLANNING INFORMATION
Expect FL210

ZEILR
VERTICAL NAVIGATION
PLANNING INFORMATION
Expect 11000



NOTE: Chart not to scale.

ARRIVAL ROUTE DESCRIPTION

PLYER TRANSITION (PLYER.PIKKR5)
REMIS TRANSITION (REMIS.PIKKR5)

LANDING KAPF/KMKY: From CODGR on track 127° to BAGGS, then on track 148° to PIKKR, then on track 140° to ZEILR, then on track 150° to ISAJY, then on heading 150° or as assigned by ATC. Expect RADAR vectors to final approach course.

SE-3, 10 OCT 2019 to 07 NOV 2019

SE-3, 10 OCT 2019 to 07 NOV 2019

ZEILR FIVE ARRIVAL

AL-6020 (FAA)

NAPLES, FLORIDA

FORT MYERS APP CON*
 125.15 306.2
 NAPLES MUNI ATIS
 134.225

ST PETERSBURG
 116.4 PIE
 Chan 111
 N27°54.47' - W82°41.06'
 L-21-24, H-8

TAYLOR
 112.9 TAY
 Chan 76

TEPEE
 N28°00.02'
 W82°21.99'
 H-8

NOTE: TEPEE TRANSITION
 NA for turbojet aircraft,
 file for PIE TRANSITION.

SARASOTA
 117.0 SRQ
 Chan 117
 N27°24.42' - W82°33.82'

LA BELLE
 110.4 LBV
 Chan 41

ZEILR
 N26°38.22' - W82°22.46'
 TURBOJET VERTICAL NAVIGATION
 PLANNING INFORMATION
 Expect 11000

NOTE: RADAR required.

NOTE: Chart not to scale.

ARRIVAL ROUTE DESCRIPTION

ST PETERSBURG TRANSITION (PIE.ZEILR5): From over PIE VORTAC on SRQ R-353 to SRQ VOR/DME. Thence. . . .

TEPEE TRANSITION (TEPEE.ZEILR5): From over TEPEE INT on SRQ R-021 to SRQ VOR/DME. Thence. . . .

. . . .From over SRQ VOR/DME on SRQ R-173 to ZEILR INT, then heading 150°. Expect RADAR vectors to final approach course.

ZEILR FIVE ARRIVAL

NAPLES, FLORIDA

SE-3, 10 OCT 2019 to 07 NOV 2019

SE-3, 10 OCT 2019 to 07 NOV 2019