

WAAS CH 90534 W18A	APP CRS 182°	Rwy Idg TDZE 675 Apt Elev 686	4799 675 686
--	------------------------	---	---

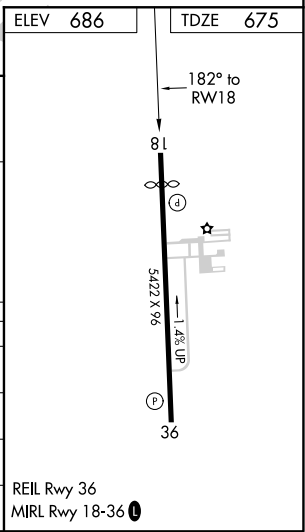
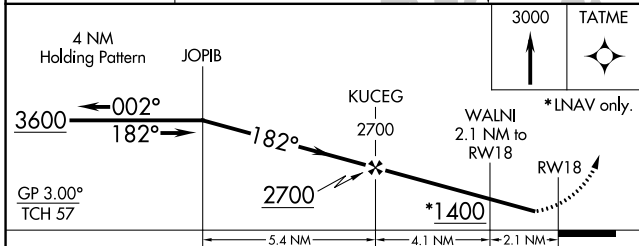
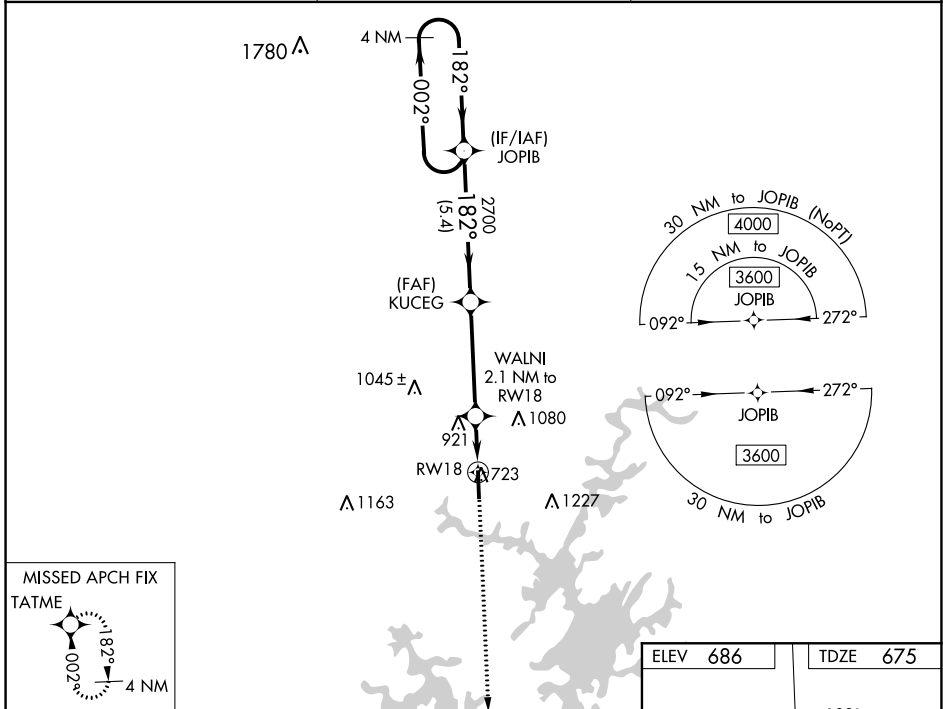
RNAV (GPS) RWY 18

THOMAS C RUSSELL FIELD (A.L.X)

⚠ For uncompensated Baro-VNAV systems, LNAV/VNAV NA below -16°C (4°F) or above 54°C (130°F). Rwy 18 helicopter visibility reduction below 1 SM NA. DME/DME RNP-0.3 NA.

MISSED APPROACH: Climb to 3000 direct TATME and hold.

AWOS-3PT 118.325	MONTGOMERY APP CON * 121.2 269.05	UNICOM 122.7 (CTAF) 0
----------------------------	---	---------------------------------



CATEGORY	A	B	C	D
LPV DA		1061-1¼	386 (400-1¼)	
LNAV/VNAV DA		1214-1¾	539 (600-1¾)	
LNAV MDA	1160-1	485 (500-1)	1160-1¾	485 (500-1½)
C CIRCLING	1180-1 494 (500-1)	1240-1 554 (600-1)	1540-2½ 854 (900-2½)	1540-2¾ 854 (900-2¾)

SE-4, 03 DEC 2020 to 31 DEC 2020

SE-4, 03 DEC 2020 to 31 DEC 2020

WAAS CH 61231 W36A	APP CRS 002°	Rwy ldg TDZE 648 Apt Elev 686	5422 648 686
--	------------------------	---	---

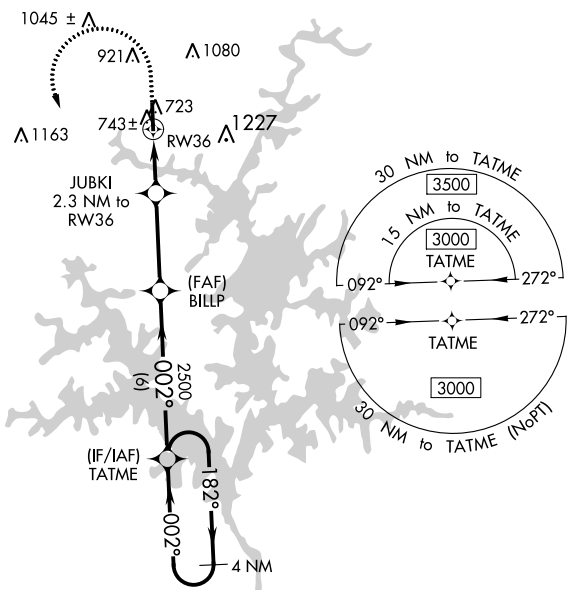
RNAV (GPS) RWY 36

THOMAS C RUSSELL FIELD (A.L.X.)

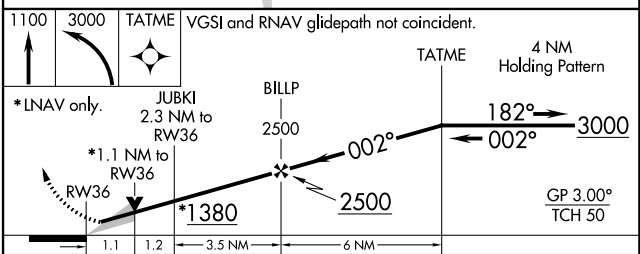
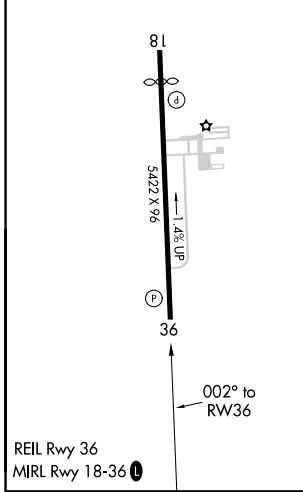
⚠ For uncompensated Baro-VNAV systems, LNAV/VNAV NA below -16°C (4°F) or above 54°C (130°F). DME/DME RNP-0.3 NA.

MISSED APPROACH: Climb to 1100 then climbing left turn to 3000 direct TATME and hold.

AWOS-3PT 118.325	MONTGOMERY APP CON ★ 121.2 269.05	UNICOM 122.7 (CTAF) 0
----------------------------	---	---------------------------------



ELEV 686	TDZE 648
-----------------	-----------------



CATEGORY	A	B	C	D
LPV DA		898-1	250 (300-1)	
LNAV/ LNAV DA		940-1½		292 (300-1½)
LNAV MDA	1000-1	352 (400-1)	1000-1½	352 (400-1½)
C CIRCLING	1180-1 494 (500-1)	1240-1 554 (600-1)	1540-2½ 854 (900-2½)	1540-2¾ 854 (900-2¾)

SE-4, 03 DEC 2020 to 31 DEC 2020

SE-4, 03 DEC 2020 to 31 DEC 2020

INSTRUMENT APPROACH PROCEDURE CHARTS

A IFR ALTERNATE AIRPORT MINIMUMS

Standard alternate minimums for non-precision approaches and approaches with vertical guidance [NDB, VOR, LOC, TACAN, LDA, SDF, VOR/DME, ASR, RNAV (GPS) or RNAV (RNP)] are 800-2. Standard alternate minimums for precision approaches (ILS, PAR, or GLS) are 600-2. Airports within this geographical area that require alternate minimums other than standard or alternate minimums with restrictions are listed below. NA - means alternate minimums are not authorized due to unmonitored facility, absence of weather reporting service, or lack of adequate navigation coverage. Civil pilots see FAR 91. IFR Alternate Minimums: Ceiling and Visibility Minimums not applicable to USA/USN/USAF. Pilots must review the IFR Alternate Minimums Notes for alternate airfield suitability.

NAME ALTERNATE MINIMUMS

ALABASTER, AL
SHELBY COUNTY (EET).....**RNAV (GPS) Rwy 16**
RNAV (GPS) Rwy 34
VOR-A¹

NA when local weather not available.
¹Category D, 800-2½.

ALBANY, GA
SOUTHWEST GEORGIA

RGNL (ABY).....**ILS or LOC Rwy 5¹²**
RNAV (GPS) Rwy 5³
RNAV (GPS) Rwy 17³
RNAV (GPS) Rwy 23³
RNAV (GPS) Rwy 35³
VOR Rwy 17³

¹NA when control tower closed.
²LOC, Category C, 800-2½; Category D, 800-2½.
³Category C, 800-2½; Category D, 800-2½.

ALBERTVILLE, AL
ALBERTVILLE RGNL-THOMAS J
BRUMLIK FLD (8A0).....**RNAV (GPS) Rwy 5**
RNAV (GPS) Rwy 23

NA when local weather not available.

ALEXANDER CITY, AL
THOMAS C RUSSELL
FIELD (ALX).....**RNAV (GPS) Rwy 18**
RNAV (GPS) Rwy 36

Category C, 900-2½; Category D, 900-2½.

ALMA, GA
BACON
COUNTY (AMG).....**RNAV (GPS) Rwy 16**
RNAV (GPS) Rwy 34

NA when local weather not available.
Category C, 800-2½; Category D, 800-2½.

ANDALUSIA/OPP, AL
SOUTH ALABAMA RGNL AT BILL BENTON
FIELD (79J).....**COPTER NDB Rwy 29**
NDB-A
RNAV (GPS) RWY 11
RNAV (GPS) RWY 29

NA when local weather not available.

NAME ALTERNATE MINIMUMS

ANNISTON, AL
ANNISTON
RGNL (ANB).....**ILS Y or LOC Y Rwy 5¹**
ILS Z or LOC Z Rwy 5²
RNAV (GPS) Rwy 5³
RNAV (GPS) Rwy 23⁴

NA when local weather not available.
¹ILS, LOC, Categories A, B, 900-2; Category C, 900-2½; Category D, 1300-3.
²ILS, Categories A, B, 900-2; Category C, 900-2½; Category D, 1300-3; LOC, Categories A, B, 900-2; Category C, 900-2½.
³Categories A, B, 900-2; Category C, 900-2½; Category D, 1300-3.
⁴Categories A, B, 900-2; Category C, 900-2½; Category D, 1300-3.

ATHENS, GA
ATHENS/BEN
EPPS (AHN).....**ILS or LOC/DME Rwy 27¹**
RNAV (GPS) Rwy 2
RNAV (GPS) Rwy 20
RNAV (GPS) Rwy 27
VOR Rwy 2
VOR Rwy 27

NA when local weather not available.
¹Category D, 700-2.

ATLANTA, GA
ATLANTA RGNL FALCON
FIELD (FFC).....**ILS or LOC Rwy 31¹²**
RNAV (GPS) Rwy 13³
RNAV (GPS) Rwy 31³

¹NA when local weather not available.
²ILS, LOC, Category D, 800-2½.
³Category D, 800-2½.

COBB COUNTY INTL-MCCOLLUM
FIELD (RYY).....**ILS or LOC Rwy 27¹²**
RNAV (GPS) Rwy 9³
RNAV (GPS) Rwy 27³

NA when local weather not available.
¹NA when control tower closed.
²ILS, Categories A, B, C, 800-2; Category D, 1200-3; LOC, Category D, 1200-3.
³Category D, 1200-3.

03 DEC 2020 to 31 DEC 2020

03 DEC 2020 to 31 DEC 2020

NAME ALTERNATE MINIMUMS

ATLANTA, GA (CON'T)

COVINGTON
MUNI (CVC).....NDB Rwy 28
VOR/DME Rwy 10

NA when local weather not available.

DEKALB-
PEACHTREE (PDK).....ILS or LOC Rwy 21L¹²³
RNAV (GPS)-A⁴
RNAV (GPS) Y Rwy 21L¹⁴

- ¹NA when local weather not available.
- ²NA when control tower closed.
- ³LOC, Category C, 900-2½; Category D, 1100-3.
- ⁴Category C, 900-2½; Category D, 1100-3.

FULTON COUNTY AIRPORT-
BROWN FIELD (FTY).....ILS or LOC Rwy 8¹
RNAV (GPS) Rwy 26²
RNAV (GPS) Y Rwy 8³

- ¹LOC, Categories A, B, 900-2; Category C, 900-2½; Category D, 900-3.
- ²Category C, 900-2½; Category D, 900-3.
- ³Categories A, B, 900-2; Category C, 900-2½; Category D, 900-3.

NEWNAN COWETA
COUNTY (CCO).....ILS or LOC Rwy 32
NA when FBO closed.
ILS, Cat D, 700-2.

PAULDING NORTHWEST
ATLANTA (PUJ).....RNAV (GPS) Rwy 31
NA when local weather not available.

AUBURN, AL
AUBURN UNIVERSITY
RGNL (AUO).....ILS or LOC Rwy 36¹²
RNAV (GPS) Rwy 11³
RNAV (GPS) Rwy 18³
RNAV (GPS) Rwy 29³
RNAV (GPS) Rwy 36³
VOR-A³

- ¹NA when local weather not available.
- ²LOC, Category D, 800-2½.
- ³Category D, 800-2½.

AUGUSTA, GA
AUGUSTA RGNL AT BUSH
FIELD (AGS).....ILS or LOC Rwy 17¹²³
ILS or LOC Rwy 35¹²³
RNAV (GPS) Rwy 17³⁴
RNAV (GPS) Rwy 26³⁴
RNAV (GPS) Rwy 35³⁴
RNAV (GPS) Y Rwy 8³⁴
RNAV (GPS) Z Rwy 8³⁵

- ¹NA when control tower closed.
- ²LOC, Category D, 800-2½.
- ³NA when local weather not available.
- ⁴Category D, 800-2½.
- ⁵Categories A, B, C, 800-2½; Category D, 800-2½.

NAME ALTERNATE MINIMUMS

AUGUSTA, GA (CON'T)

DANIEL FIELD (DNL).....NDB Rwy 11
RNAV (GPS) Rwy 5¹
RNAV (GPS) Y Rwy 11²
VOR/DME-B

NA when local weather not available.

- ¹Categories A, B, C, D, 1100-4.
- ²Categories C, D, 1000-3.

BAINBRIDGE, GA
DECATUR COUNTY INDUSTRIAL
AIR PARK (BGE).....RNAV (GPS) Rwy 9
RNAV (GPS) Rwy 27

NA when local weather not available.

BIRMINGHAM, AL
BIRMINGHAM-SHUTTLESWORTH
INTL (BHM).....RNAV (GPS) Rwy 36¹
RNAV (GPS) Y Rwy 6²

- ¹Categories A, B, 900-2; Categories C, D, 900-2½.
- ²Category D, 900-2½.

BLAKELY, GA
EARLY COUNTY (BIJ).....RNAV (GPS) Rwy 5
RNAV (GPS) Rwy 23

NA when local weather not available.

BRUNSWICK, GA
BRUNSWICK GOLDEN
ISLES (BQK).....ILS or LOC Rwy 7
RNAV (GPS) Rwy 7
RNAV (GPS) Rwy 25
VOR/DME-B

NA when local weather not available.

BUTLER, GA
BUTLER
MUNI (6A1).....RNAV (GPS) Rwy 1
RNAV (GPS) Rwy 19

Category D, 800-2½.

CANON, GA
FRANKLIN
COUNTY (18A).....RNAV (GPS) Rwy 8¹
RNAV (GPS) Rwy 26

NA when local weather not available.

- ¹Category D, 800-2½.

CANTON, GA
CHEROKEE COUNTY
RGNL (CNI).....NDB Rwy 5
RNAV (GPS) Rwy 5
RNAV (GPS) Rwy 23

NA when local weather not available.

CARROLLTON, GA
WEST GEORGIA RGNL-O V GRAY
FIELD (CTJ).....RNAV (GPS) Rwy 17
RNAV (GPS) Rwy 35

NA when local weather not available.

03 DEC 2020 to 31 DEC 2020

03 DEC 2020 to 31 DEC 2020

NAME ALTERNATE MINIMUMS

CARTERSVILLE, GA

CARTERSVILLE (VPC).....RNAV (GPS) Rwy 1¹
 RNAV (GPS) Rwy 19¹
 VOR-A²

NA when local weather not available.

¹Category C, 900-2¼; Category D, 900-2¾.²Categories A, B, 900-2; Category C, 900-2¼; Category D, 900-2¾.**CLAXTON, GA**

CLAXTON-EVANS
 COUNTY (CWV).....RNAV (GPS) Rwy 10
 RNAV (GPS) Rwy 28

NA when local weather not available.

Category C, 800-2¼; Category D, 800-2¼.

COLUMBUS, GA

COLUMBUS (CSG).....ILS or LOC Rwy 6
 NA when control tower closed.

CORDELE, GA

CRISP COUNTY-
 CORDELE (CKF).....RNAV (GPS) Rwy 6
 RNAV (GPS) Rwy 10
 RNAV (GPS) Rwy 24
 RNAV (GPS) Rwy 28

NA when local weather not available.

Category C, 800-2¼; Category D, 900-2¾.

COURTLAND, AL

COURTLAND (9A4).....RNAV (GPS) Rwy 13
 RNAV (GPS) Rwy 31

Category D, 800-2¼.

NA when local weather not available.

CULLMAN, AL

CULLMAN RGNL – FOLSOM
 FIELD (CMD).....RNAV (GPS) Rwy 2
 RNAV (GPS) Rwy 20

NA when local weather not available.

Category D, 800-2¼.

DALTON, GA

DALTON MUNI (DNN).....ILS or LOC Rwy 14¹²³
 RNAV (GPS) Rwy 14⁴
 RNAV (GPS) Rwy 32⁴

¹NA when local weather not available.²NA when CHA APP CON closed.³LOC, Category D, 800-2¼.⁴Category D, 800-2¼.

NAME ALTERNATE MINIMUMS

DECATUR, AL

PRYOR FIELD
 RGNL (DCU).....ILS Y or LOC Y Rwy 18¹²
 ILS Z or LOC Z Rwy 18¹²
 RNAV (GPS) Rwy 18¹³
 RNAV (GPS) Rwy 36³

¹NA when local weather not available.²ILS, LOC, Category C, 800-2¼; Category D, 800-2¼.³Category C, 800-2¼; Category D, 800-2¼.**DEMOPOLIS, AL**

DEMOPOLIS
 RGNL (DYA).....RNAV (GPS) Rwy 4
 NA when local weather not available.

DONALSONVILLE, GA

DONALSONVILLE
 MUNI (17J).....RNAV (GPS) Rwy 1¹
 RNAV (GPS) Rwy 19¹
 VOR-A²

NA when local weather not available.

¹Category D, 800-2¼.²Categories A, B, 1000-2; Category C, 1000-2¾; Category D, 1000-3.**DOTHAN, AL**

DOTHAN RGNL (DHN).....COPTER VOR Rwy 36¹
 ILS or LOC Rwy 14²³
 ILS or LOC Rwy 32²⁴
 VOR Rwy 14¹
 VOR or TACAN-A²

¹NA when local weather not available.²NA when control tower closed.³LOC Category D, 800-2¼.⁴LOC, Categories A, B, 900-2, Category C, 900-2½, Category D, 900-2¾.**DOUGLAS, GA**

DOUGLAS
 MUNI (DQH).....ILS or LOC Rwy 4¹
 RNAV (GPS) Rwy 22²

¹ILS, Category D, 1000-3.²Category D, 1000-3.**DUBLIN, GA**

W H 'BUD'
 BARRON (DBN).....RNAV (GPS) Rwy 2
 RNAV (GPS) Rwy 20

NA when local weather not available.

Category D, 800-2¼.

EASTMAN, GA

HEART OF GEORGIA
 RGNL (EZM).....ILS or LOC Rwy 2¹
 RNAV (GPS) Rwy 2
 RNAV (GPS) Rwy 20

NA when local weather not available.

¹NA when control tower closed.

NAME ALTERNATE MINIMUMS

HOMERVILLE, GA

HOMERVILLE (HOE).....RNAV (GPS) Rwy 14
RNAV (GPS) Rwy 32
VOR/DME-A

NA when local weather not available.
Category C, 800-2¼; Category D, 800-2½.

HUNTSVILLE, AL

HUNTSVILLE INTL-CARL T JONES
FIELD (HSV).....ILS or LOC Rwy 18L¹²⁴
ILS or LOC Rwy 18R¹²
ILS or LOC Rwy 36L¹²⁴
ILS or LOC Rwy 36R¹²⁴
RADAR-1¹³
RNAV (GPS) Rwy 18L³
RNAV (GPS) Rwy 18R³
RNAV (GPS) Rwy 36L³
RNAV (GPS) Rwy 36R⁴

¹NA when control tower closed.
²LOC, Category E, 800-2¼.
³Category E, 800-2¼.
⁴NA when local weather not available.

HUNTSVILLE EXECUTIVE TOM SHARP JR

FIELD (MDQ).....ILS or LOC Rwy 18¹
RNAV (GPS) Rwy 18²
RNAV (GPS) Rwy 36²
VOR-B²

¹LOC, Category C, 800-2¼; Category D, 1300-3.
²Category C, 800-2¼; Category D, 1300-3.

JASPER, AL

WALKER COUNTY-
BEVILL FIELD (JFX).....RNAV (GPS) Rwy 9
RNAV (GPS) Rwy 27
VOR/DME-A¹

NA when local weather not available.
¹Category D, 800-2¼.

JEFFERSON, GA

JACKSON
COUNTY (JCA).....RNAV (GPS) Rwy 17
RNAV (GPS) Rwy 35

NA when local weather not available.

JESUP, GA

JESUP-WAYNE
COUNTY (JES).....RNAV (GPS) Rwy 29
Category D, 800-2¼.

LAFAYETTE, GA

BARWICK
LAFAYETTE (9A5).....RNAV (GPS) Rwy 2
RNAV (GPS) Rwy 20

NA when local weather not available.
Category A, 900-2.

NAME ALTERNATE MINIMUMS

LAGRANGE, GA

LAGRANGE-
CALLAWAY (LGC).....RNAV (GPS) Rwy 3
RNAV (GPS) Rwy 13
RNAV (GPS) Rwy 31¹

Category C, 900-2¼; Category D, 1000-3.
¹NA when local weather not available.

LAWRENCEVILLE, GA

GWINNETT COUNTY -
BRISCOE FIELD (LZU).....ILS or LOC Rwy 25
RNAV (GPS) Rwy 7
RNAV (GPS) Rwy 25

NA when local weather not available.

MACON, GA

MIDDLE GEORGIA
RGNL (MCN).....ILS or LOC Rwy 5¹²
RNAV (GPS) Rwy 5³
RNAV (GPS) Rwy 14³
RNAV (GPS) Rwy 23³
RNAV (GPS) Rwy 32³
VOR Rwy 14⁴
VOR Rwy 23⁵

¹NA when control tower closed.
²LOC, Category, D, 800-2¼; Category E, 900-3.
³Category D, 800-2¼.
⁴Categories A, B, 1000-2; Category C, 1000-2¼;
Category D, 1000-3.
⁵Categories A, B, 1300-2; Categories C, D,
1300-3.

MILLEDGEVILLE, GA

BALDWIN COUNTY
RGNL (MLJ).....RNAV (GPS) Rwy 10
RNAV (GPS) Rwy 28

NA when local weather not available.
Category D, 900-3.

MILLEN, GA

MILLEN (2J5).....RNAV (GPS) Rwy 17
RNAV (GPS) Rwy 35

Category D, 800-2¼.

MOBILE, AL

MOBILE
DOWNTOWN (BFM).....ILS or LOC Rwy 32¹²³
RNAV (GPS) Rwy 14¹⁴
RNAV (GPS) Rwy 18¹⁴
RNAV (GPS) Rwy 32¹⁴
RNAV (GPS) Rwy 36¹⁴
VOR Rwy 14⁴
VOR Rwy 18⁴
VOR Rwy 32¹⁴

¹NA when local weather not available.
²NA when control tower closed.
³ILS, Categories A, B, C, 700-2; Category D,
1100-3; LOC, Category D, 1100-3.
⁴Category D, 1100-3.

03 DEC 2020 to 31 DEC 2020

03 DEC 2020 to 31 DEC 2020

NAME ALTERNATE MINIMUMS

MOBILE, AL (CON'T)

MOBILE RGNL (MOB).....ILS or LOC Rwy 15
ILS or LOC Rwy 33

NA when control tower closed.

MONROE, GA

CY NUNNLY

MEMORIAL (D73).....RNAV (GPS) Rwy 3
NA when local weather not available.

MONTGOMERY, AL

MONTGOMERY RGNL (DANNELLY

FIELD) (MGM).....ILS or LOC Rwy 10¹³
ILS Y or LOC Rwy 28¹³
RNAV (GPS) Rwy 10²
RNAV (GPS) Rwy 28²

¹ILS, Category D, 700-2; Category E, 700-2½;

²LOC, Category E, 800-2¼.

³Category E, 800-2¼.

³NA when control tower closed.

MUSCLE SHOALS, AL

NORTHWEST ALABAMA

RGNL (MSL).....ILS Y or LOC Y Rwy 30¹
ILS Z or LOC Z Rwy 30¹
RNAV (GPS) Rwy 12²
RNAV (GPS) Rwy 18
RNAV (GPS) Rwy 30²
RNAV (GPS) Rwy 36²

NA when local weather not available.

¹LOC, Category D, 800-2¼.

²Category D, 800-2¼.

MOULTRIE, GA

MOULTRIE MUNI (MGR).....NDB-A
RNAV (GPS) Rwy 4
RNAV (GPS) Rwy 22

NA when local weather not available.

Category D, 800-2¼.

PRATTVILLE, AL

PRATTVILLE - GROUBY

FIELD (1A9).....RNAV (GPS) Rwy 27
Category C, 900-2½; Category D, 1000-3.

PELL CITY, AL

ST CLAIR

COUNTY (PLR).....RNAV (GPS) Rwy 3
RNAV (GPS) Rwy 21

NA when local weather not available.

Category C, 800-2¼; Category D, 900-2¼.

PINE MOUNTAIN, GA

HARRIS

COUNTY (PIM).....RNAV (GPS) Rwy 9
VOR-A

Category D, 800-2½.

NAME ALTERNATE MINIMUMS

REDSTONE AAF (KHUA)

REDSTONE

ARSENAL, AL.....RNAV (GPS) Rwy 17
RNAV (GPS) Rwy 35

Category C, 800-2½; Categories D, E, 1100-3.

REIDSVILLE, GA

SWINTON SMITH FIELD AT REIDSVILLE

MUNI (RVJ).....RNAV (GPS) Rwy 11
NA when local weather not available.

ROME, GA

RICHARD B. RUSSELL REGIONAL -

J.H. TOWERS

FIELD (RMG).....ILS or LOC Rwy 1¹
RNAV (GPS) Rwy 1²
RNAV (GPS) Rwy 7²
RNAV (GPS) Rwy 19²
RNAV (GPS) Rwy 25²

NA when local weather not available.

¹LOC, Category C, 900-2½; Category D, 1300-3.

²Category C, 900-2½; Category D, 1300-3.

SANDERSVILLE, GA

KAOLIN FIELD (OKZ).....RNAV (GPS) Rwy 13
RNAV (GPS) Rwy 31

NA when local weather not available.

Category C, 900-2¼.

SAVANNAH, GA

SAVANNAH/HILTON

HEAD INTL (SAV).....ILS or LOC Rwy 1¹²
ILS or LOC Rwy 10¹²
RNAV (GPS) Rwy 1³⁴
RNAV (GPS) Rwy 10³⁴
RNAV (GPS) Rwy 19³⁴
RNAV (GPS) Z Rwy 28³⁴
VOR/DME-A³⁵
VOR/DME or TACAN Rwy 1³⁵
VOR/DME or TACAN Rwy 19³⁵

¹NA when control tower closed.

²LOC, Category D, 800-2¼.

³NA when local weather not available.

⁴Category D, 800-2¼.

⁵Category D, 800-2¼; Category E, 900-3.

SCOTTSBORO, AL

SCOTTSBORO-MUNI-WORD

FIELD (4A6).....RNAV (GPS) Rwy 4
RNAV (GPS) Rwy 22

Category A, 1000-2; Category B, 1100-2;

Categories C, D, 1200-3.

03 DEC 2020 to 31 DEC 2020

03 DEC 2020 to 31 DEC 2020

20310

NAME ALTERNATE MINIMUMS

SELMA, AL

CRAIG
FIELD (SEM).....**ILS Y or LOC Y Rwy 33²**
ILS Z or LOC Z Rwy 33²
RNAV (GPS) Rwy 15¹
RNAV (GPS) Rwy 33¹

NA when local weather not available.

¹Category D, 900-2¼.²ILS, LOC, Category D, 900-2¼.**STATESBORO, GA**

STATESBORO-BULLOCH
COUNTY (TBR).....**ILS or LOC Rwy 32²**
RNAV (GPS) Rwy 32¹

NA when local weather not available.

¹Category D, 800-2¼.²ILS, Categories B, C, 700-2; Category D, 700-2 ¼; LOC, Category D, 800-2¼.**SWAINSBORO, GA**

EAST GEORGIA
REGIONAL (SBO).....**ILS or LOC/DME Rwy 14**
NDB Rwy 14
RNAV (GPS) Rwy 14
RNAV (GPS) Rwy 32

NA when local weather not available.

SYLACAUGA, AL

MERKEL FIELD SYLACAUGA
MUNI (SCD).....**RNAV (GPS) Rwy 9**
RNAV (GPS) Rwy 27

NA when local weather not available.

Category B, 900-2; Category C, 1100-3;

Category D, 1200-3.

SYLVANIA, GA

PLANTATION AIRPARK (JYL).....**NDB Rwy 23**
RNAV (GPS) Rwy 5
RNAV (GPS) Rwy 23

NA when local weather not available.

Category D, 900-2¼.

TALLADEGA, AL

TALLADEGA
MUNI (ASN).....**RNAV (GPS) Rwy 4**

NA when local weather not available.

Category C, 900-2¼; Category D, 1000-3.

THOMASTON, GA

THOMASTON-UPSON
COUNTY (OPN).....**RNAV (GPS) Rwy 12**
RNAV (GPS) Rwy 30

NA when local weather not available.

THOMSON, GA

THOMSON-MCDUFFIE
COUNTY (HQU).....**RNAV (GPS) Rwy 10**
RNAV (GPS) Rwy 28¹
VOR/DME-A

NA when local weather not available.

¹Category D, 800-2¼.

NAME ALTERNATE

THOMASVILLE, GA

THOMASVILLE
RGNL (TVI).....**ILS or LOC Rwy 22¹**
NDB Rwy 22²
RNAV (GPS) Rwy 4²
RNAV (GPS) Rwy 22²

NA when local weather not available.

¹ILS, Category C, 700-2; Category D, 800-2½;

LOC, Category D, 800-2½.

²Category D, 800-2½.**TIFTON, GA**

HENRY TIFT
MYRES (TMA).....**RNAV (GPS) Rwy 16**
RNAV (GPS) Rwy 34

Category D, 900-3.

TROY, AL

TROY MUNI AT N KENNETH
CAMPBELL FIELD (TOI).....**ILS or LOC Rwy 7¹²³**
NDB Rwy 7¹²⁴
RADAR-1⁴
RNAV (GPS) Rwy 7²⁴
RNAV (GPS) Rwy 14²⁴
RNAV (GPS) Rwy 25²⁴
RNAV (GPS) Rwy 32²⁴

¹NA when tower closed.²NA when local weather not available.³ILS, Categories A, B, 700-2;

Category C, 1000-2¼; Category D, 1000-3;

LOC, Category C, 1000-2¼; Category D, 1000-3.

⁴Category C, 1000-2¼; Category D, 1000-3.**TUSCALOOSA, AL**

TUSCALOOSA
NATIONAL (TCL).....**ILS or LOC Rwy 4¹²³**
RNAV (GPS) Rwy 4²
RNAV (GPS) Rwy 12²
RNAV (GPS) Rwy 22²
RNAV (GPS) Rwy 30²⁴
VOR or TACAN Rwy 4¹

¹NA when control tower closed.²NA when local weather not available.³ILS, Categories A, B, C, D, 700-2.⁴Category D, 800-2¼.**VALDOSTA, GA**

VALDOSTA
RGNL (VLD).....**ILS or LOC Rwy 35¹**
RNAV (GPS) Rwy 4
RNAV (GPS) Rwy 17
RNAV (GPS) Rwy 35
VOR Rwy 17
VOR Rwy 35

NA when local weather not available.

¹ILS, LOC, Category E, 900-3.

03 DEC 2020 to 31 DEC 2020

03 DEC 2020 to 31 DEC 2020

20310

M7

20310

NAME ALTERNATE MINIMUMS NAME ALTERNATE

VIDALIA, GA

VIDALIA RGNL (VDI).....RNAV (GPS) Rwy 7
RNAV (GPS) Rwy 25¹

Category D, 800-2½.

¹NA when local weather not available.

WAYCROSS, GA

WAYCROSS-WARE
COUNTY (AYS).....ILS Y or LOC Y Rwy 19¹
ILS Z or LOC Z Rwy 19¹
RNAV (GPS) Rwy 1²
RNAV (GPS) Rwy 19²
VOR-A²

NA when local weather not available.

¹ILS, Category C, 800-2; Category D, 800-2¼.

LOC, Category D, 800-2¼.

²Category D, 800-2¼.

03 DEC 2020 to 31 DEC 2020

03 DEC 2020 to 31 DEC 2020

20310