

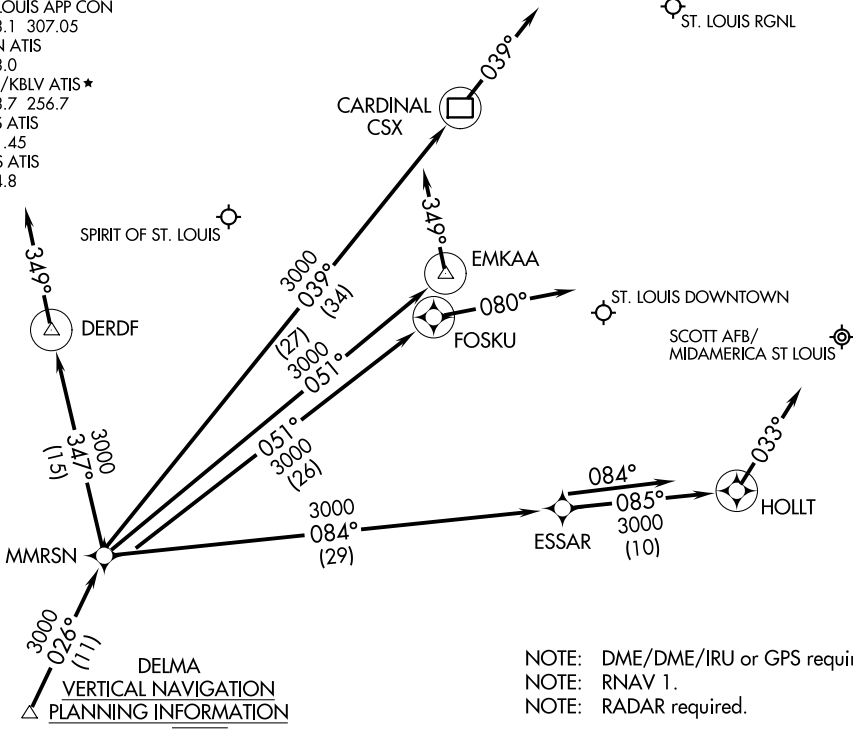
DELMA FOUR ARRIVAL (RNAV)

AL-46 (FAA)

BELLEVILLE, ILLINOIS

ST LOUIS APP CON
 128.1 307.05
 ALN ATIS
 128.0
 BLV/KBLV ATIS *
 128.7 256.7
 CPS ATIS
 121.45
 SUS ATIS
 134.8

ST. LOUIS RGNL



DELMA
 VERTICAL NAVIGATION
 PLANNING INFORMATION
 Expect 13000

NOTE: DME/DME/IRU or GPS required.
 NOTE: RNAV 1.
 NOTE: RADAR required.

NOTE: Chart not to scale.

ARRIVAL ROUTE DESCRIPTION

SPIRIT OF ST. LOUIS:

LANDING RUNWAYS 8L/R: From DELMA on track 026° to MMRSN, then on track 347° to DERDF. Expect RADAR vectors to final approach. If no heading received, track 349°.
LANDING RUNWAYS 26L/R: From DELMA on track 026° to MMRSN, then on track 051° to EMKAA. Expect RADAR vectors to final approach. If no heading received, track 349°.

ST. LOUIS DOWNTOWN:

LANDING RUNWAY 12R: From DELMA on track 026° to MMRSN, then on track 051° to FOSKU. Expect RADAR vectors to final approach. If no heading received, track 080°.
LANDING RUNWAYS 30L/R: From DELMA on track 026° to MMRSN, then on track 084° to ESSAR, then on track 085° to HOLLT. Expect RADAR vectors to final approach. If no heading received, track 033°.

SCOTT AFB/MIDAMERICA ST LOUIS:

LANDING RUNWAYS 14L/R, 32L/R: From DELMA on track 026° to MMRSN, then on track 084° to ESSAR. Expect RADAR vectors to final approach. If no heading received, track 084°.

ST. LOUIS RGNL:

LANDING RUNWAYS 11, 17, 29, 35: From DELMA on track 026° to MMRSN, then on track 039° to CSX DME. Expect RADAR vectors to final approach course. If no heading received, track 039°.

DELMA FOUR ARRIVAL (RNAV)

BELLEVILLE, ILLINOIS

EC-3, 27 JAN 2022 to 24 FEB 2022

EC-3, 27 JAN 2022 to 24 FEB 2022

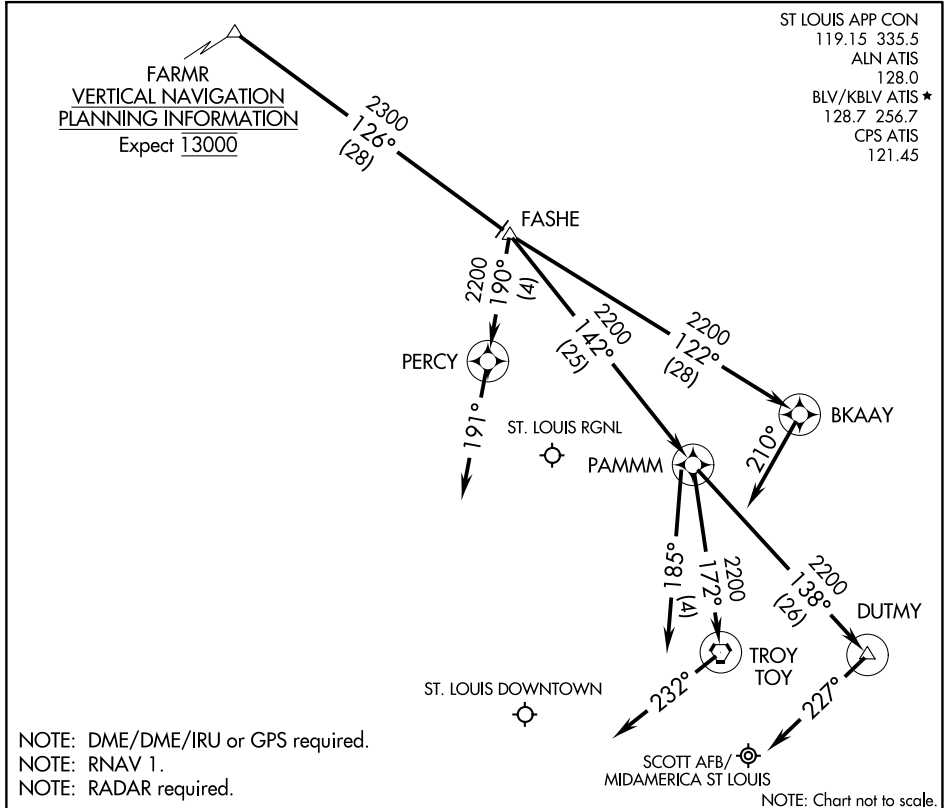
FARMR THREE ARRIVAL (RNAV)

AL-46 (FAA)

BELLEVILLE, ILLINOIS

FARMR
VERTICAL NAVIGATION
PLANNING INFORMATION
Expect 13000

ST LOUIS APP CON
119.15 335.5
ALN ATIS
128.0
BLV/KBLV ATIS ★
128.7 256.7
CPS ATIS
121.45



NOTE: DME/DME/IRU or GPS required.
NOTE: RNAV 1.
NOTE: RADAR required.

NOTE: Chart not to scale.

ARRIVAL DESCRIPTION

ST. LOUIS DOWNTOWN:

LANDING RWY 12R, 30L/R: From FARMR on track 126° to FASHE, then on track 142° to PAMMM. Expect radar vector prior to PAMMM. If no heading received, track 185°.

SCOTT AFB/MIDAMERICA ST LOUIS:

LANDING RWYS 14L/R: From FARMR on track 126° to FASHE, then on track 142° to PAMMM, then on track 172° to TOY VORTAC. Expect RADAR vector prior to TOY VORTAC. If no heading received, track 232°.

LANDING RWYS 32L/R: From FARMR on track 126° to FASHE, then on track 142° to PAMMM, then on track 138° to DUTMY. Expect radar vector prior to DUTMY. If no heading received, track 227°.

ST. LOUIS RGNL:

LANDING RWY 11: From FARMR on track 126° to FASHE, then on track 190° to PERCY. Expect radar vector prior to PERCY. If no heading received, track 191°.

LANDING RWY 29: From FARMR on track 126° to FASHE, then on track 122° to BKAAY. Expect radar vector prior to BKAAY. If no heading received, track 210°.

FARMR THREE ARRIVAL (RNAV)

BELLEVILLE, ILLINOIS