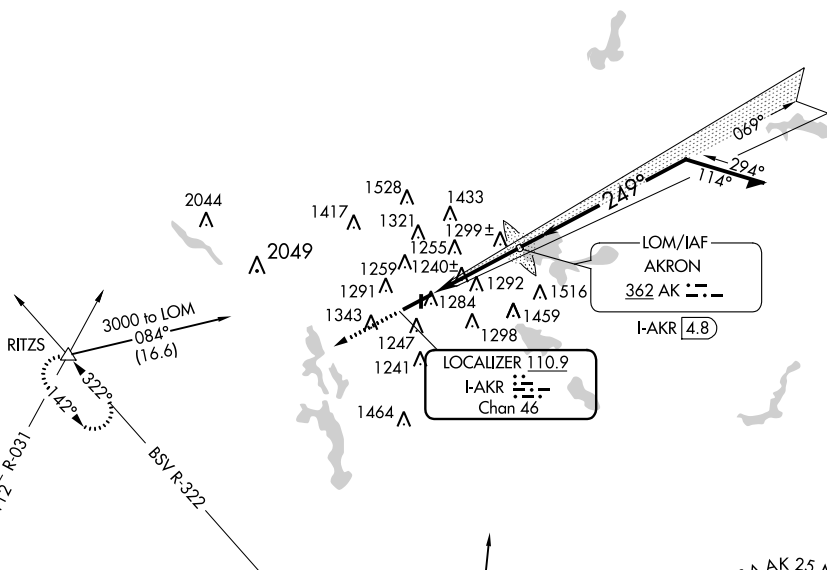


LOC/DME I- AKR	APP CRS	Rwy Idg	6077
110.9	249°	TDZE	1048
Chan 46		Apt Elev	1068

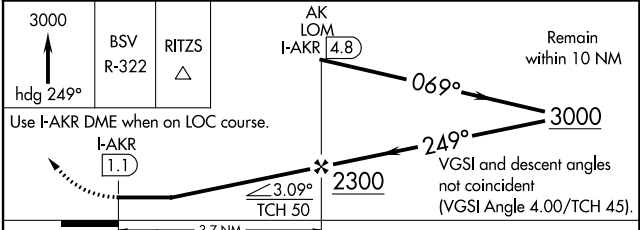
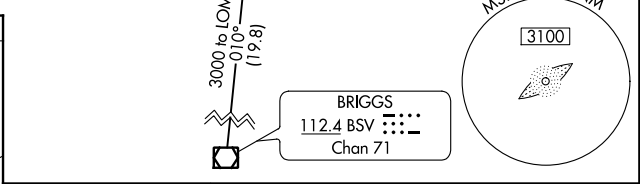
LOC RWY 25
AKRON FULTON INTL (AKR)

<p>▽ ▲ NA</p>		<p>MISSED APPROACH: Climb to 3000 via heading 249° and BSV R-322 to RITZS Int and hold.</p>	
ASOS	AKRON-CANTON APP CON *	CLNC DEL	UNICOM
126.825	118.6 371.875	121.6	123.075 (CTAF) ①

ADF or RADAR REQUIRED



ELEV 1068	TDZE 1048
<p>249° 3.6 NM from FAF</p>	
<p>REIL Rwy 7 and 25 ① MIRL Rwy 1-19 ① HIRL Rwy 7-25 ①</p>	
<p>FAF to MAP 3.6 NM</p>	
Knots	60 90 120 150 180
Min:Sec	3:36 2:24 1:48 1:26 1:12



CATEGORY	A	B	C	D
S-25	1540-1	492 (500-1)	1540-1¼ 492 (500-1¼)	1540-1½ 492 (500-1½)
CIRCLING	1640-1 572 (600-1)	1700-1 632 (700-1)	1700-1¾ 632 (700-1¾)	1700-2 632 (700-2)

EC-2: 26 APR 2018 to 24 MAY 2018

EC-2: 26 APR 2018 to 24 MAY 2018

AK NDB 362	APP CRS 249°	Rwy Idg TDZE Apt Elev	6077 1059 1068
----------------------	------------------------	-----------------------------	---

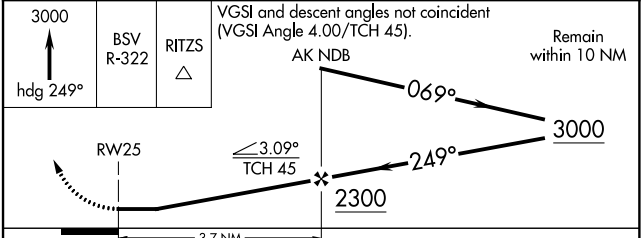
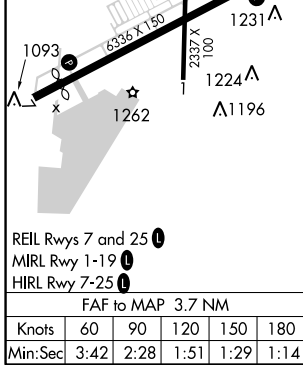
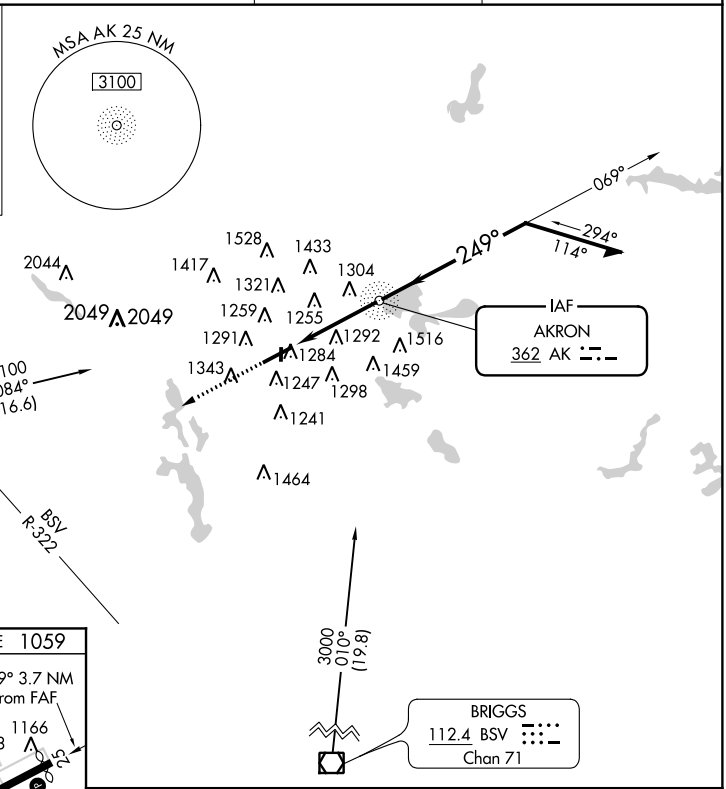
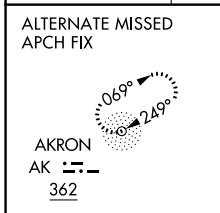
NDB RWY 25

AKRON FULTON INTL (AKR)

⚠ Helicopter visibility reduction below 1 SM NA. Procedure NA at night. When local altimeter setting not received, use Akron-Canton Rgnl altimeter setting and increase all MDA 40 feet. Increase S-25 Cat C/D visibility to 1 $\frac{1}{8}$ mile, Circling Cat C visibility to 2 $\frac{1}{4}$ mile, and Circling Cat D visibility to 3 $\frac{1}{4}$ mile.

MISSSED APPROACH: Climb to 3000 on heading 249° and on BSV VOR/DME R-322 to RITZS INT and hold.

ASOS 126.825	AKRON-CANTON APP CON ★ 118.6 371.875	CLNC DEL 121.6	UNICOM 123.075 (CTAF) 0
------------------------	--	--------------------------	-----------------------------------



CATEGORY	A	B	C	D
S-25	1660-1	601 (600-1)	1660-1 $\frac{3}{4}$	601 (600-1 $\frac{3}{4}$)
CIRCLING	1660-1 592 (600-1)	1680-1 612 (700-1)	1800-2 732 (800-2)	1840-2 $\frac{1}{2}$ 772 (800-2 $\frac{1}{2}$)

