

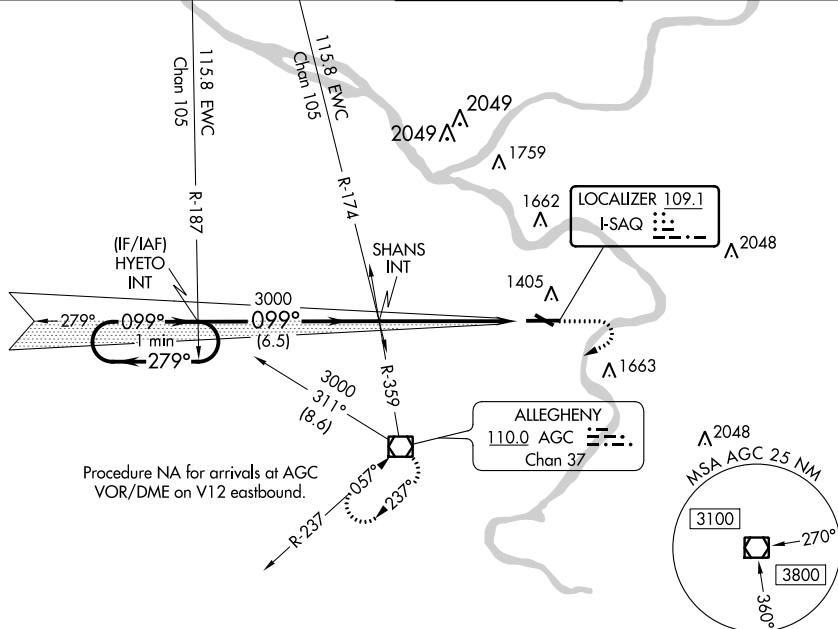
LOC I-SAQ <b>109.1</b>	APP CRS <b>099°</b>	Rwy ldg TDZE Apt Elev	<b>6501</b> <b>1251</b> <b>1252</b>
---------------------------	------------------------	-----------------------------	---

# ILS or LOC RWY 10

ALLEGHENY COUNTY (AGC)

		MISSED APPROACH: Climb to 2000 then climbing right turn to 3000 direct AGC VOR/DME and hold.	
--	--	--	--

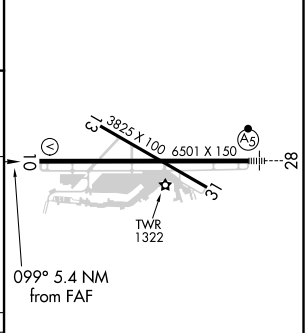
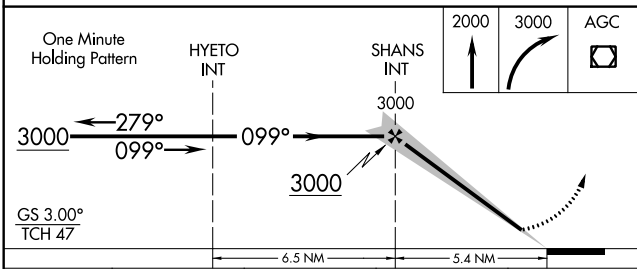
ATIS <b>120.55</b>	PITTSBURGH APP CON <b>119.35 285.575 337.4</b>	ALLEGHENY TOWER <b>121.1 239.0</b>	GND CON <b>121.7</b>
-----------------------	---	---------------------------------------	-------------------------



NE-4, 25 FEB 2021 to 25 MAR 2021

NE-4, 25 FEB 2021 to 25 MAR 2021

ELEV 1252	TDZE 1251
-----------	-----------



CATEGORY	A	B	C	D
S-ILS 10	1451-3/4		200 (200-3/4)	
S-LOC 10	1760-1 509 (600-1)		1760-1 3/8 509 (600-1 3/8)	
CIRCLING	1760-1 508 (600-1)		1980-2 728 (800-2) 1980-2 1/4 728 (800-2 1/4)	

REIL Rwy 10, 13, and 31	HRL Rwy 10-28 and 13-31
FAF to MAP 5.4 NM	
Knots	60 90 120 150 180
Min:Sec	5:24 3:36 2:42 2:10 1:48

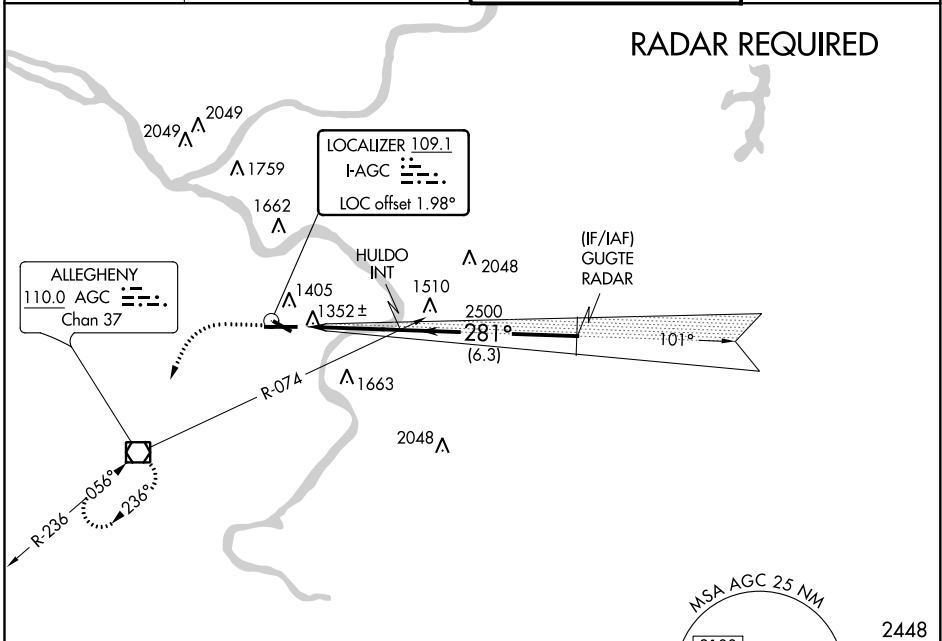
LOC I-AGC <b>109.1</b>	APP CRS <b>281°</b>	Rwy ldg TDZE Apt Elev	<b>6501</b> <b>1251</b> <b>1252</b>
---------------------------	------------------------	-----------------------------	---

# ILS or LOC RWY 28

ALLEGHENY COUNTY (AGC)

For inoperative MALS, increase S-LOC Cats C and D visibility to RVR 6000.		MALS 	MISSED APPROACH: Climb to 2000 then climbing left turn to 3000 direct AGC VOR/DME and hold.
---	--	----------	---

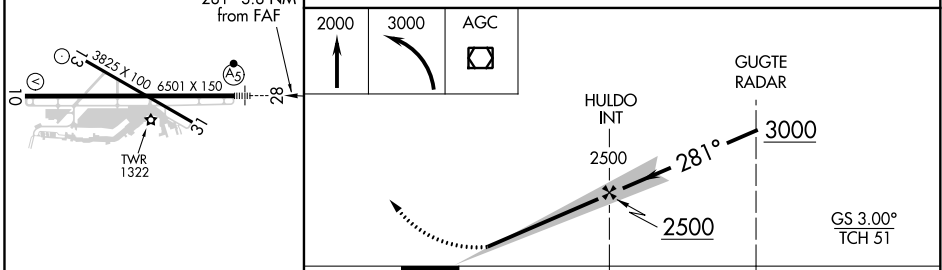
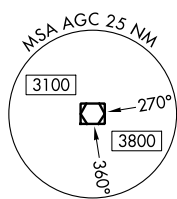
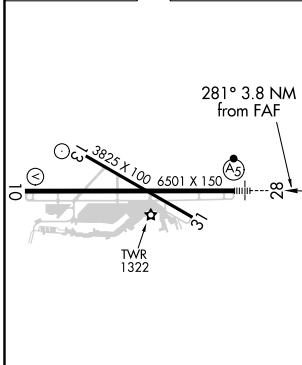
ATIS <b>120.55</b>	PITTSBURGH APP CON <b>119.35 285.575</b>	ALLEGHENY TOWER <b>121.1 239.0</b>	GND CON <b>121.7</b>
-----------------------	---	---------------------------------------	-------------------------



NE-4, 25 FEB 2021 to 25 MAR 2021

NE-4, 25 FEB 2021 to 25 MAR 2021

ELEV 1252	TDZE 1251
-----------	-----------



REIL Rwy 10, 13, and 31 HIRL Rwy 10-28 and 13-31					
FAF to MAP 3.8 NM					
Knots	60	90	120	150	180
Min:Sec	3:48	2:32	1:54	1:31	1:16
CIRCLING	1720-1	468 (500-1)	1980-2 728 (800-2)	1980-2¼ 728 (800-2¼)	

WAAS CH <b>97325</b> <b>W10A</b>	APP CRS <b>099°</b>	Rwy Idg TDZE Apt Elev <b>6501</b> <b>1251</b> <b>1252</b>
--	------------------------	--

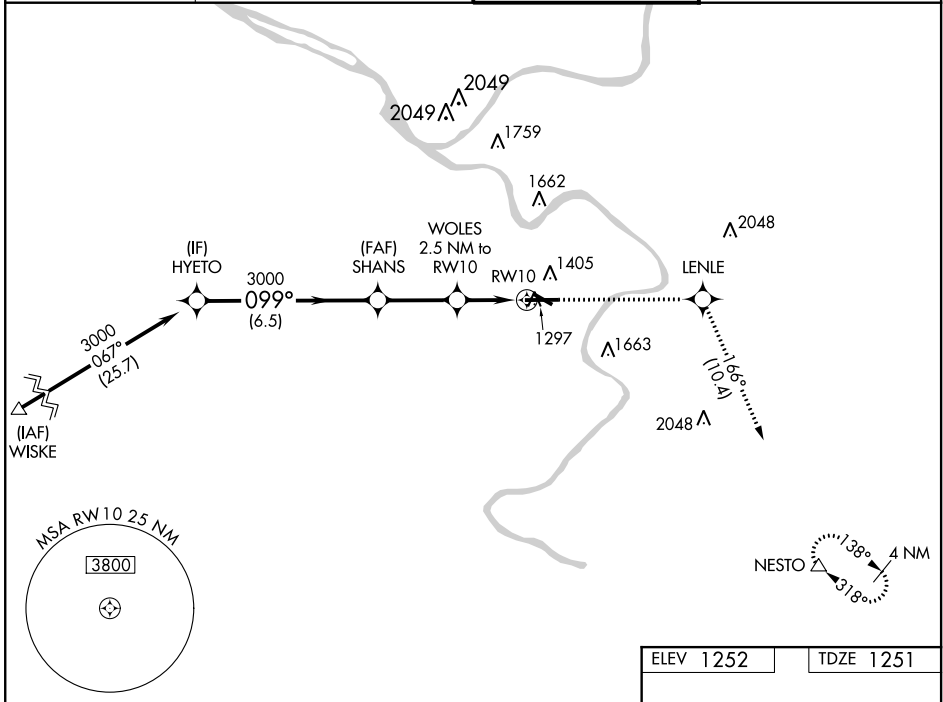
# RNAV (GPS) RWY 10

ALLEGHENY COUNTY (AGC)

For uncompensated Baro-VNAV systems, LNAV/VNAV NA below -17°C (2°F) or above 54°C (130°F). DME/DME RNP-0.3 NA.

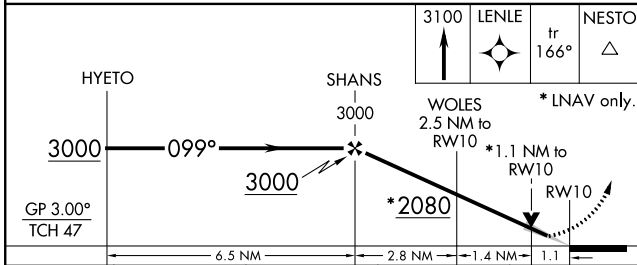
MISSED APPROACH: Climb to 3100 direct LENLE and on track 166° to NESTO and hold.

ATIS <b>120.55</b>	PITTSBURGH APP CON <b>119.35 285.575</b>	ALLEGHENY TOWER <b>121.1 239.0</b>	GND CON <b>121.7</b>
-----------------------	---	---------------------------------------	-------------------------



NE-4, 25 FEB 2021 to 25 MAR 2021

NE-4, 25 FEB 2021 to 25 MAR 2021



ELEV 1252	TDZE 1251
-----------	-----------

Final approach diagram showing 099° to RWY 10, 3825 X 100, 6501 X 150, TWR 1322, and 28 ft obstacle.

CATEGORY	A	B	C	D
LPV DA		1451-3/4	200 (200-3/4)	
LNAV/VNAV DA		1554-1	303 (400-1)	
LNAV MDA	1660-1	409 (500-1)	1660-1 1/8	409 (500-1 1/8)
CIRCLING	1720-1	468 (500-1)	1980-2 728 (800-2)	1980-2 1/4 728 (800-2 1/4)

REIL Rwy 10, 13, and 31  
HIRL Rwy 10-28 and 13-31

WAAS CH <b>65625</b> <b>W28A</b>	APP CRS <b>279°</b>	Rwy ldg TDZE <b>1251</b> Apt Elev <b>1252</b>	<b>6501</b>
--	------------------------	---	-------------

# RNAV (GPS) RWY 28

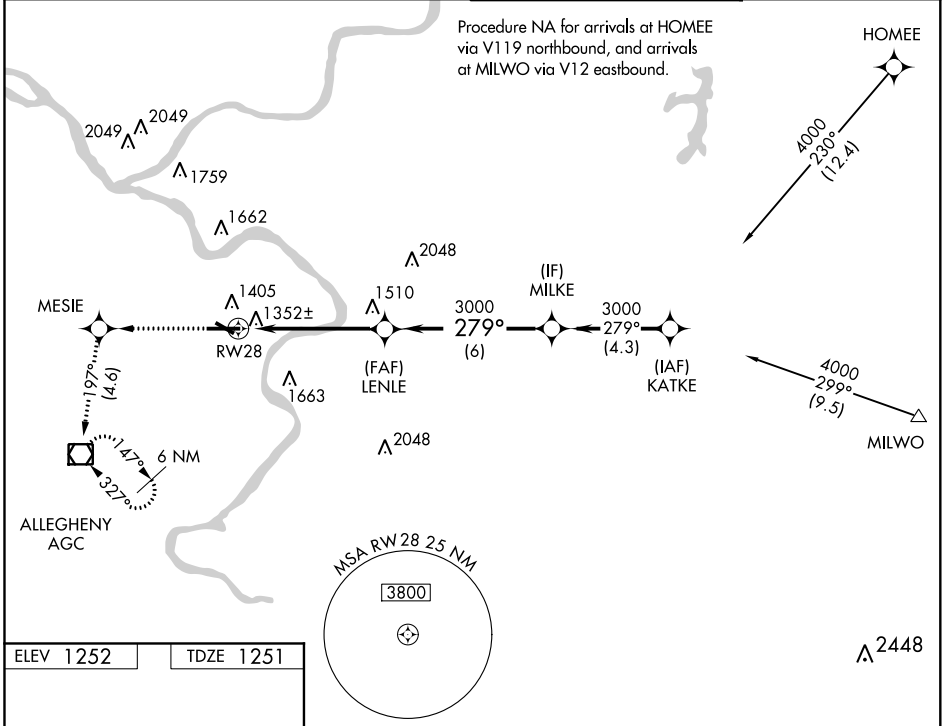
ALLEGHENY COUNTY (AGC)

Baro-VNAV NA below -17°C (2°F).  
DME/DME RNP-0.3 NA.  
For inoperative MALSRS, increase LPV visibility to RVR 5000 all Cats.

MALSRS

MISSED APPROACH: Climb to 3000 direct MESIE and via 197° track to AGC VOR/DME and hold.

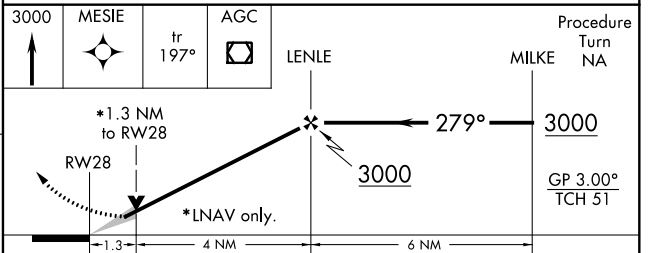
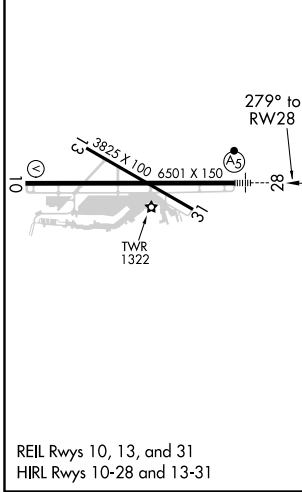
ATIS <b>120.55</b>	PITTSBURGH APP CON <b>119.35 285.575</b>	ALLEGHENY TOWER <b>121.1 239.0</b>	GND CON <b>121.7</b>
-----------------------	---	---------------------------------------	-------------------------



NE-4, 25 FEB 2021 to 25 MAR 2021

NE-4, 25 FEB 2021 to 25 MAR 2021

ELEV 1252	TDZE 1251
-----------	-----------



CATEGORY	A	B	C	D
LPV DA	1563/24 312 (400-½)			
LNAV/VNAV DA	1625/40 374 (400-¾)			
LNAV MDA	1700/24 449 (500-½)	1700/40 449 (500-¾)	1700/50 449 (500-1)	
<input checked="" type="checkbox"/> CIRCLING	1720-1¼ 468 (500-1¼)	1980-2 728 (800-2)	1980-2¼ 728 (800-2¼)	