

LOC/DME I-AFP <b>108.55</b> Chan <b>22(Y)</b>	APP CRS <b>342°</b>	Rwy Idg TDZE Apt Elev	<b>5498</b> <b>299</b> <b>300</b>
---	------------------------	-----------------------------	---

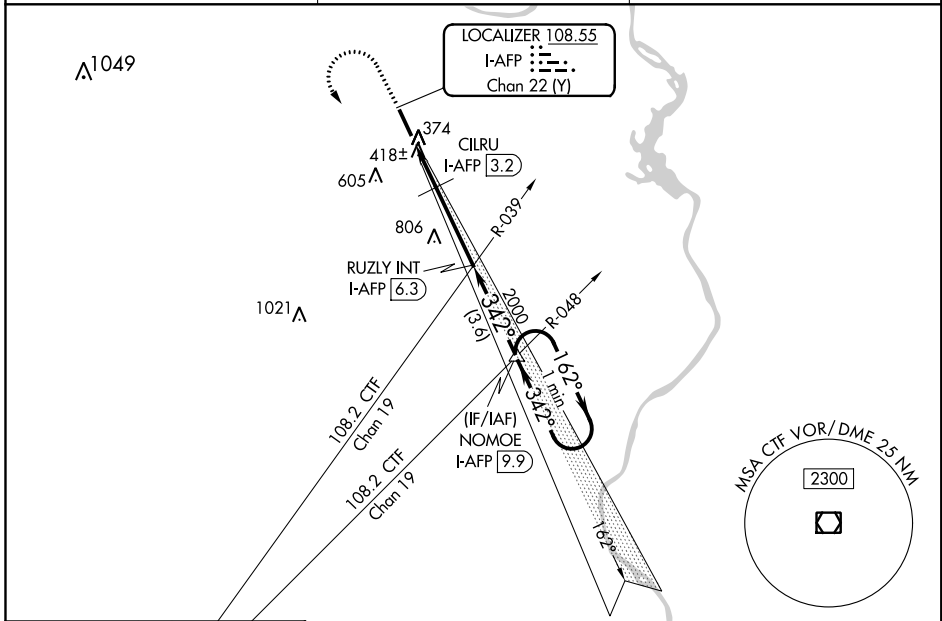
# ILS or LOC RWY 34

ANSON COUNTY-JEFF CLOUD FIELD (AFP)

**⚠** When VGSI inoperative, Circling Rwy 16 NA at night. VDP NA when using Rockingham altimeter setting. When local altimeter setting not received, use Rockingham altimeter setting: increase S-ILS 34 DA to 607 and S-ILS 34 all Cats visibility 1/8 mile; increase all MDA 60 feet and S-LOC 34 Cats C/D and Circling Cat C visibility 1/8 mile and CIRLU Fix Minimums S-LOC 34 Cats C/D and Circling Cat C visibility 1/4 mile.

**MISSED APPROACH:** Climb to 1000 then climbing left turn to 3000 on heading 120° and on I-AFP S course (162°) to NOMOE INT/I-AFP 9.9 DME and hold.

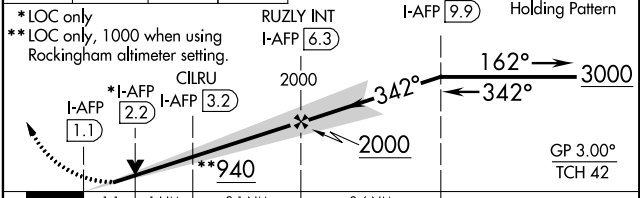
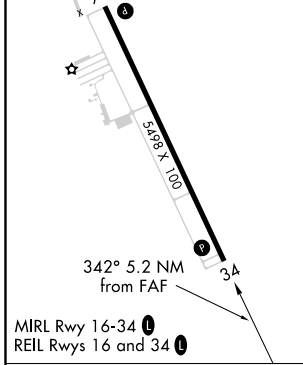
AWOS-3 <b>119.325</b>	CHARLOTTE APP CON <b>120.05 307.8</b>	UNICOM <b>122.8 (CTAF) 0</b>
--------------------------	--	---------------------------------



SE-2, 21 JUN 2018 to 19 JUL 2018

SE-2, 21 JUN 2018 to 19 JUL 2018

ELEV 300	TDZE 299	1000	3000	NOMOE	VGSI and ILS glidepath not coincident (VGSI Angle 3.00/TCH 45).
		↑	hdg 120°	I-AFP S crs	△



CATEGORY	A	B	C	D
S-ILS 34	558-7/8		259 (300-7/8)	
S-LOC 34	940-1	641 (700-1)	940-17/8	641 (700-17/8)
CIRCLING	940-1	640 (700-1)	940-17/8	980-2 1/4 680 (700-2 1/4)
CIRLU FIX MINIMUMS				
S-LOC 34	680-1	381 (400-1)	680-1 1/8	381 (400-1 1/8)
CIRCLING	820-1 520 (600-1)	860-1 560 (600-1)	880-1 1/2 580 (600-1 1/2)	980-2 1/4 680 (700-2 1/4)

WADESBORO, NORTH CAROLINA  
Orig-B 24JUL14

ANSON COUNTY-JEFF CLOUD FIELD (AFP)  
35°01'N-80°05'W

# ILS or LOC RWY 34

WAAS CH <b>40221</b> <b>W16A</b>	APP CRS <b>162°</b>	Rwy Idg TDZE Apt Elev	<b>5498</b> <b>300</b> <b>300</b>
--	------------------------	-----------------------------	---

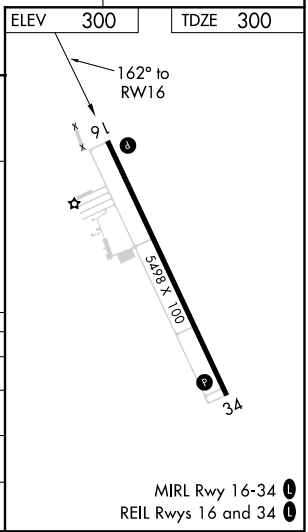
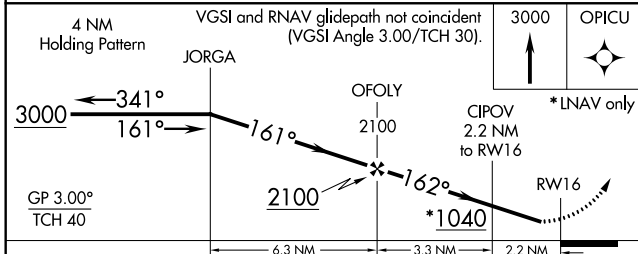
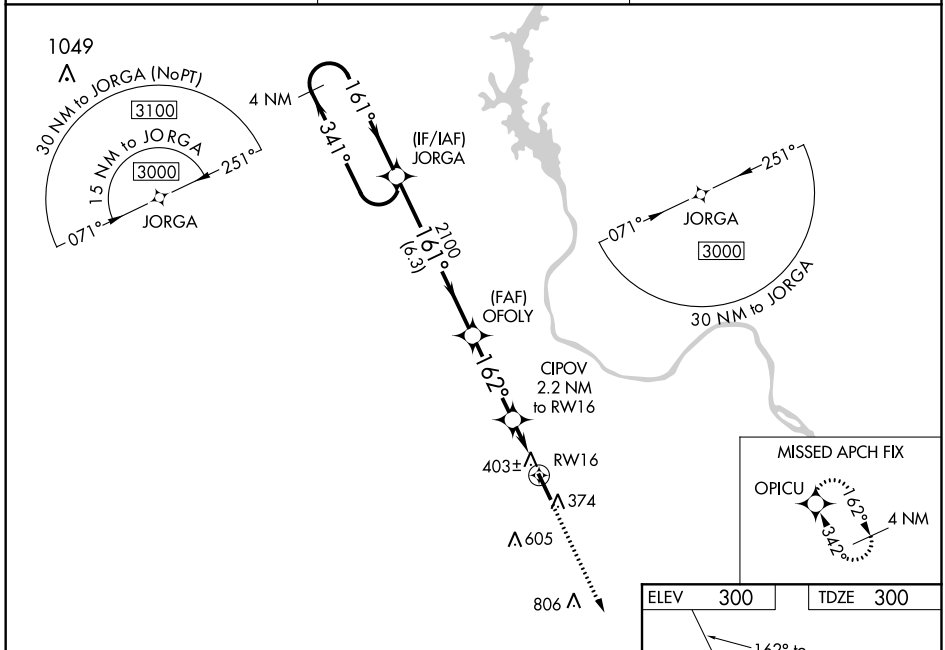
# RNAV (GPS) RWY 16

ANSON COUNTY-JEFF CLOUD FIELD (A/F)

**⚠** Baro-VNAV NA when using Rockingham altimeter setting. For uncompensated Baro-VNAV systems, LNAV/VNAV NA below -15°C (5°F) or above 42°C (107°F). When VGSI inop, Straight-in/Circling Rwy 16 procedure NA at night. DME/DME RNP-0.3 NA. Helicopter visibility reduction below 1 SM NA. When local altimeter setting not received, use Rockingham altimeter setting: increase LPV DA to 655 and LPV all Cats visibility ¼ mile; increase LNAV/VNAV DA to 634 and LNAV/VNAV all Cats visibility ⅓ mile; increase all MDA 60 feet and LNAV Cats C/D and Circling Cat C visibility ¼ mile.

**MISSED APPROACH:**  
Climb to 3000 direct OPICU and hold.

AWOS-3 <b>119.325</b>	CHARLOTTE APP CON <b>120.05 307.8</b>	UNICOM <b>122.8 (CTAF) 0</b>
--------------------------	--	---------------------------------



CATEGORY	A	B	C	D
LPV DA		606-1	306 (400-1)	
LNAV/VNAV DA		585-1	285 (300-1)	
LNAV MDA		660-1	360 (400-1)	
CIRCLING	820-1 520 (600-1)	860-1 560 (600-1)	880-1½ 580 (600-1½)	980-2¼ 680 (700-2¼)

SE-2, 21 JUN 2018 to 19 JUL 2018

SE-2, 21 JUN 2018 to 19 JUL 2018

MIRL Rwy 16-34  
REIL Rwy 16 and 34

WAAS CH <b>69408</b> <b>W34A</b>	APP CRS <b>342°</b>	Rwy Idg <b>5498</b> TDZE <b>299</b> Apt Elev <b>300</b>
--	------------------------	--

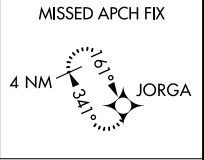
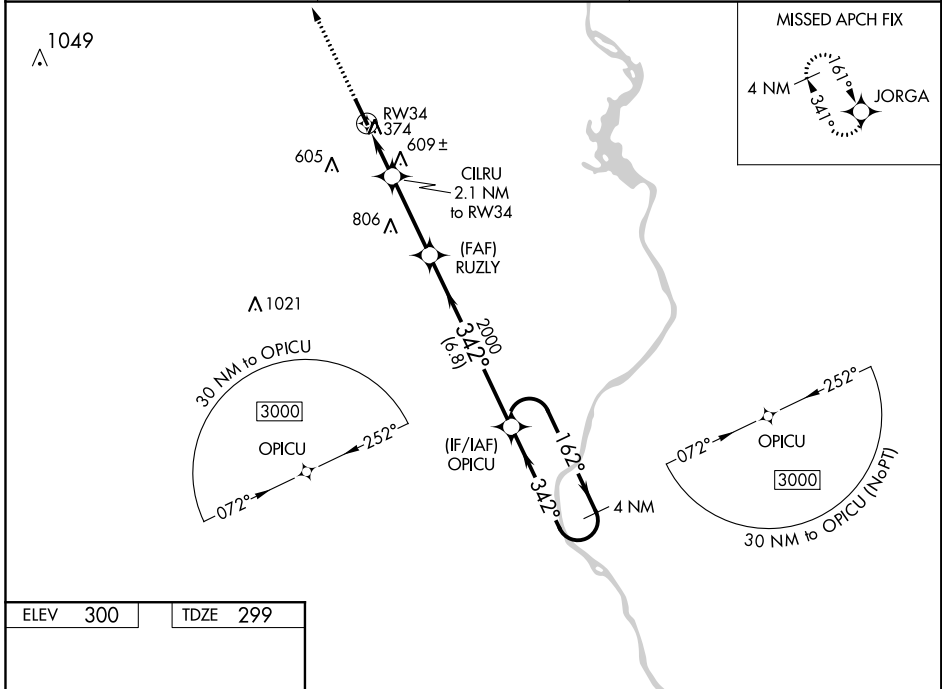
# RNAV (GPS) RWY 34

ANSON COUNTY-JEFF CLOUD FIELD (A/F/P)

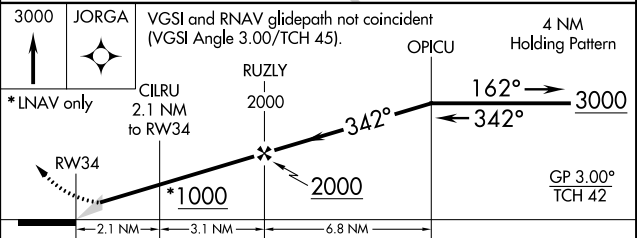
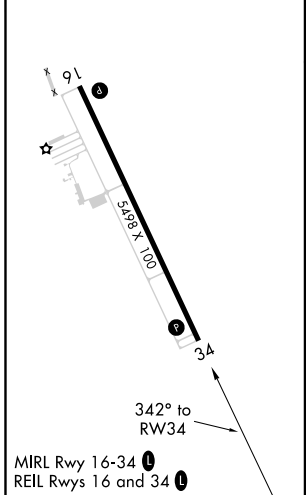
**⚠** When VGSI inop, Circling Rwy 16 NA at night. Baro-VNAV NA when using Rockingham altimeter setting. For uncompensated Baro-VNAV systems, LNAV/VNAV NA below -15°C (5°F) or above 42°C (107°F). DME/DME RNP-0.3 NA. When local altimeter setting not received, use Rockingham altimeter setting: increase LPV DA to 598 and LPV all Cats visibility 1/8 mile; increase LNAV/VNAV DA to 1005 and LNAV/VNAV all Cats visibility 1/4 mile; increase all MDA 60 feet and LNAV Cats C/D and Circling Cat C visibility 1/8 mile.

**MISSED APPROACH:**  
Climb to 3000 direct JORGA and hold.

AWOS-3 <b>119,325</b>	CHARLOTTE APP CON <b>120.05 307.8</b>	UNICOM <b>122.8 (CTAF) 0</b>
--------------------------	--	---------------------------------



ELEV <b>300</b>	TDZE <b>299</b>
-----------------	-----------------



CATEGORY	A	B	C	D
LPV DA	549-7/8		250 (300-7/8)	
LNAV/VNAV DA	956-2 1/4		657 (700-2 1/4)	
LNAV MDA	860-1	561 (600-1)	860-1 1/2	561 (600-1 1/2)
CIRCLING	860-1	560 (600-1)	880-1 1/2 580 (600-1 1/2)	980-2 1/4 680 (700-2 1/4)

SE-2, 21 JUN 2018 to 19 JUL 2018

SE-2, 21 JUN 2018 to 19 JUL 2018