

APP CRS <b>023°</b>	Rwy Idg TDZE Apt Elev	<b>N/A</b> <b>N/A</b> <b>1040</b>
------------------------	-----------------------------	---

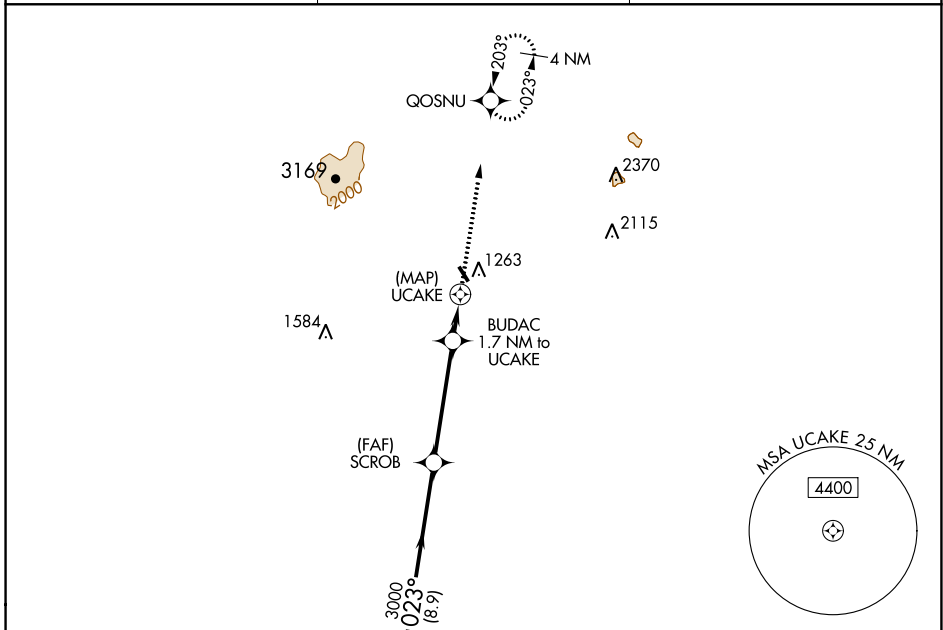
# RNAV (GPS)-B

JAFFREY AIRPORT-SILVER RANCH (A/FN)

**⚠** When local altimeter setting not received, use Keene altimeter setting and increase all MDA 120 feet and all Cats visibility ¼ mile. DME/DME RNP-0.3 NA. Procedure NA at night. Visibility reduction by helicopters NA.

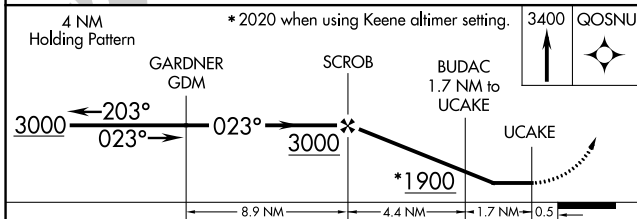
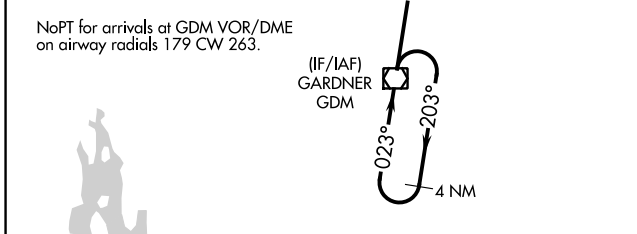
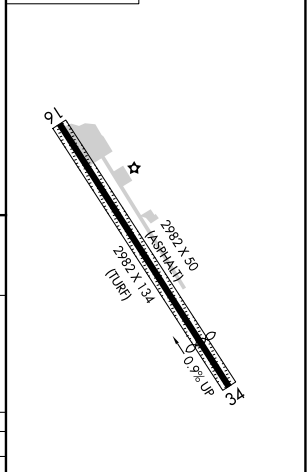
**⚠** MISSED APPROACH: Climb to 3400 direct QOSNU and hold.

ASOS <b>135.875</b>	BOSTON CENTER <b>123.75 338.2</b>	UNICOM <b>122.8 (CTAF)</b>
------------------------	--------------------------------------	-------------------------------



NoPT for arrivals at GDM VOR/DME on airway radials 179 CW 263.

ELEV 1040



CATEGORY	A	B	C	D
CIRCLING	1760-1	720 (800-1)	NA	

LIRL Rwy 16-34

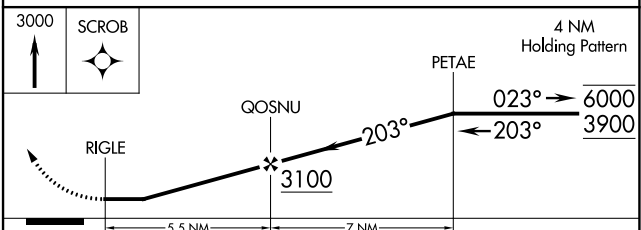
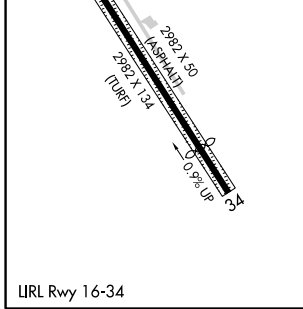
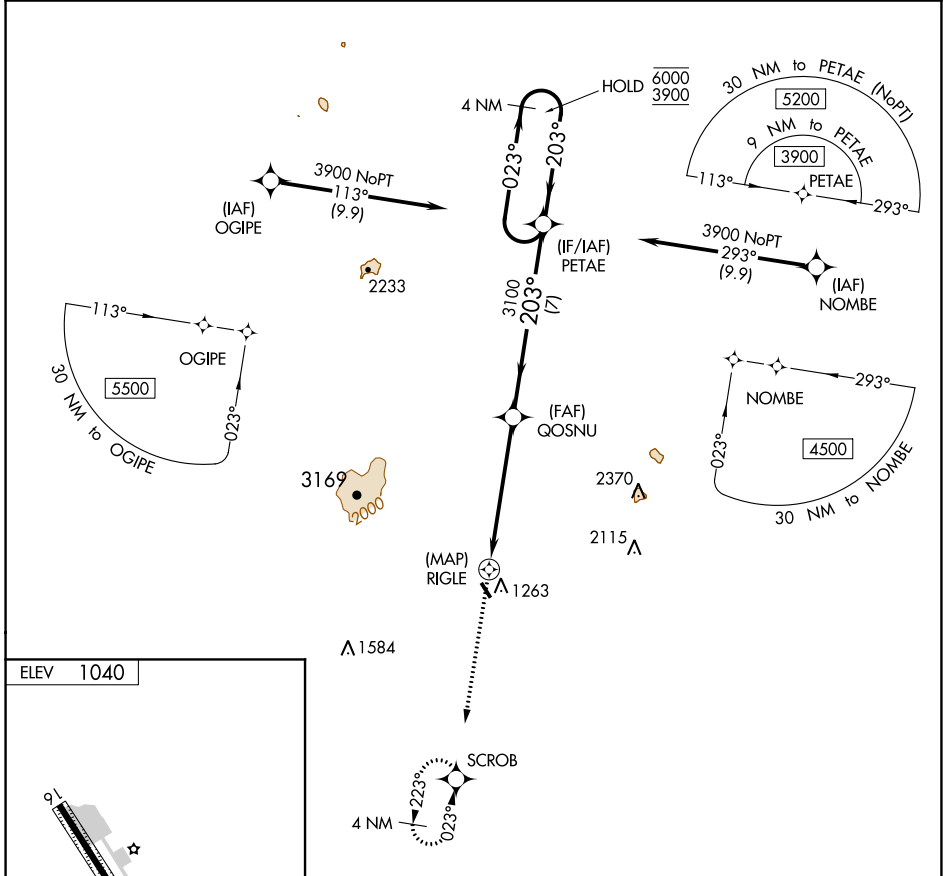
NE-1, 25 FEB 2021 to 25 MAR 2021

NE-1, 25 FEB 2021 to 25 MAR 2021

**RNAV (GPS)-C**  
**JAFFREY AIRPORT-SILVER RANCH (A/FN)**

APP CRS	Rwy Idg	N/A
<b>203°</b>	TDZE	N/A
	Apt Elev	<b>1040</b>

RNP APCH.		MISSED APPROACH: Climb to 3000 direct SCROB and hold.
ASOS <b>135.875</b>	BOSTON CENTER <b>123.75 338.2</b>	UNICOM <b>122.8 (CTAF)</b>



CATEGORY	A	B	C	D
<b>C</b> CIRCLING	1680-1 640 (700-1)	1840-1 800 (800-1)	NA	

NE-1, 25 FEB 2021 to 25 MAR 2021

NE-1, 25 FEB 2021 to 25 MAR 2021

VOR/DME GDM <b>110.6</b> Chan <b>43</b>	APP CRS <b>023°</b>	Rwy Idg TDZE Apt Elev <b>1040</b>	<b>N/A</b> <b>N/A</b> <b>1040</b>
---	------------------------	--	---

# VOR-A

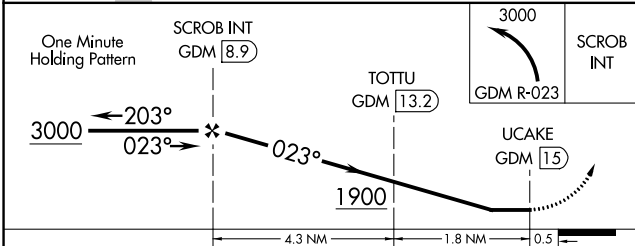
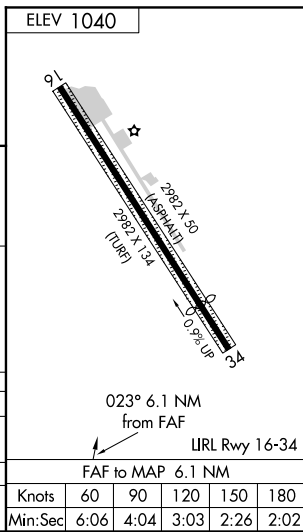
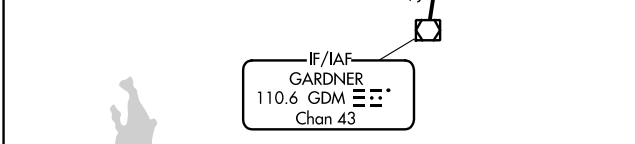
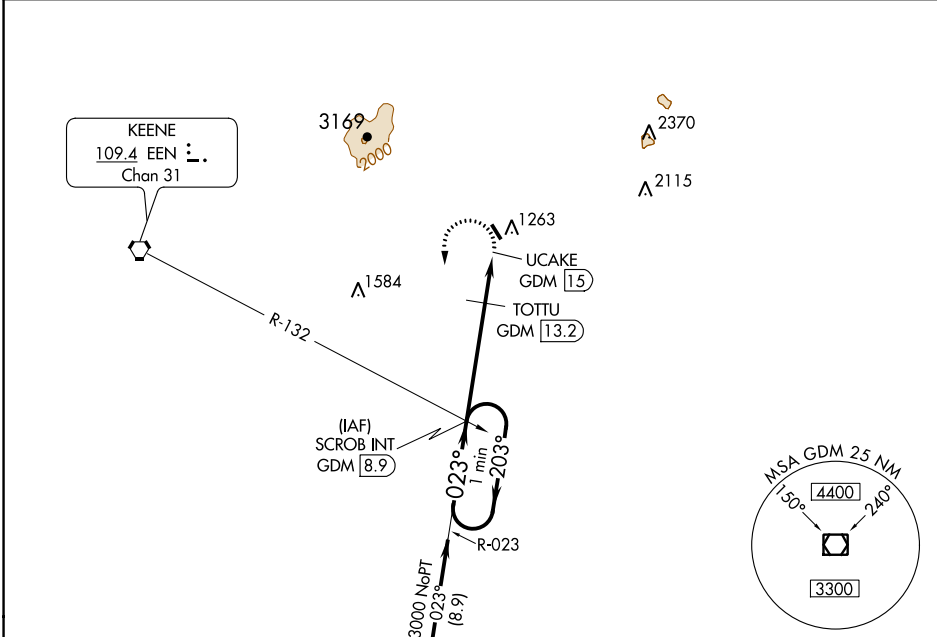
JAFFREY AIRPORT-SILVER RANCH (A/FN)



Visibility reduction by helicopters NA. When local altimeter setting not received, use KEENE altimeter setting and increase all MDA 120 feet; increase Cat B and TOTTU fix minimums all Cats visibility 1/4 mile. Procedure NA at night.

MISSED APPROACH: Climbing left turn to 3000 on GDM VOR/DME R-023 to SCROB INT/GDM 8.9 DME and hold.

ASOS <b>135.875</b>	BOSTON CENTER <b>123.75 338.2</b>	UNICOM <b>122.8 (CTAF)</b>
------------------------	--------------------------------------	-------------------------------



CATEGORY	A	B	C	D
CIRCLING	1900-1 1/4	860 (900-1 1/4)		NA
TOTTU FIX MINIMUMS				
CIRCLING	1780-1	740 (800-1)		NA

Knots	60	90	120	150	180
Min:Sec	6:06	4:04	3:03	2:26	2:02

NE-1, 25 FEB 2021 to 25 MAR 2021

NE-1, 25 FEB 2021 to 25 MAR 2021