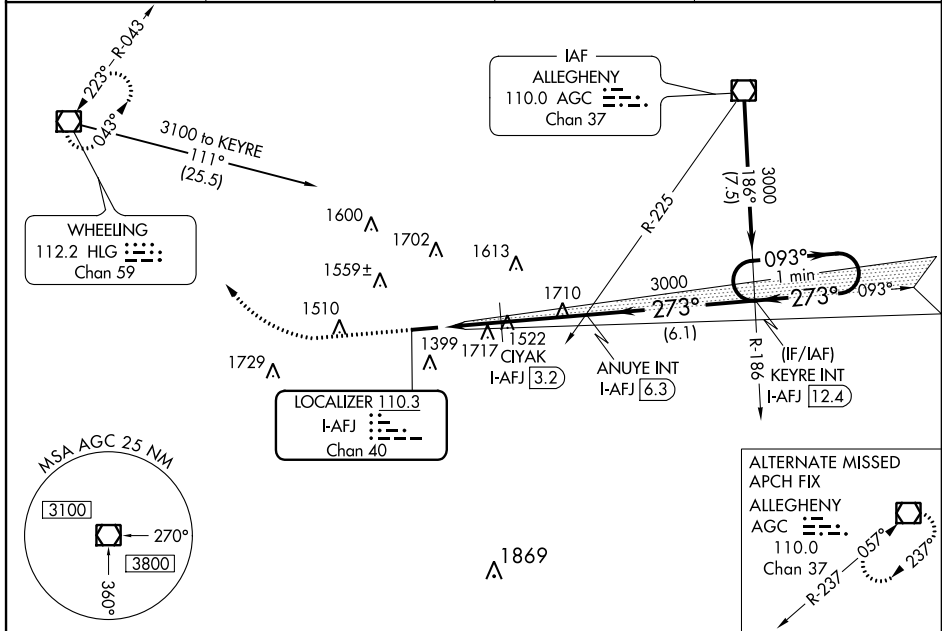


LOC/DME I-AFJ 110.3 Chan 40	APP CRS 273°	Rwy Idg TDZE 1184 Apt Elev 1184
--	------------------------	---

ILS or LOC RWY 27

WASHINGTON COUNTY (A.F.J)

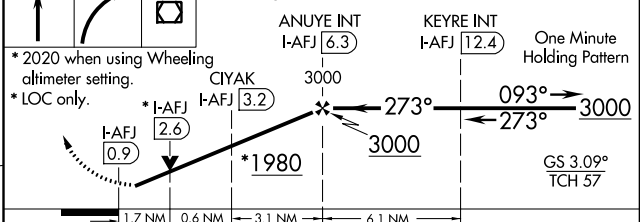
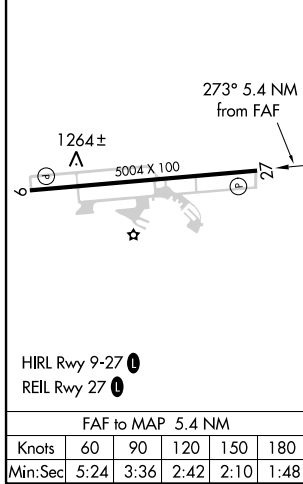
<p>▼ Night Landing: Rwy 9 NA. Helicopter visibility reduction below 3/4 SM NA. VDP NA when using Wheeling altimeter setting. When local altimeter setting not received, use Wheeling altimeter setting and increase all DA/MDA 40 feet, increase Circling visibility Cats A and D 1/2 mile; CIYAK fix minimums: increase visibility S-LOC 27 Cats C and D 1/2 mile, Circling Cat C 1/2 mile and Cat D 1/4 mile.</p>	<p>▲ MISSED APPROACH: Climb to 1700 then climbing right turn to 3300 direct HLG VOR/DME and hold.</p>		
AWOS-3PT 119.175	PITTSBURGH APP CON 119.35 285.575	CLNC DEL 127.3	UNICOM 122.975 (CTAF) 0



NE-4, 26 APR 2018 to 24 MAY 2018

NE-4, 26 APR 2018 to 24 MAY 2018

ELEV 1184	TDZE 1184	1700	3300	HLG	VGSI and ILS glidepath not coincident. (VGSI Angle 3.09/TCH 62).
-----------	-----------	------	------	-----	---



CATEGORY	A	B	C	D
S-ILS 27	1384-3/4 200 (200-3/4)			
S-LOC 27	1980-1 796 (800-1)	1980-1 1/4 796 (800-1 1/4)	1980-2 1/2 796 (800-2 1/2)	2040-2 3/4 856 (900-2 3/4)
CIRCLING	1980-1 796 (800-1)	1980-1 1/4 796 (800-1 1/4)	1980-2 1/2 796 (800-2 1/2)	2040-2 3/4 856 (900-2 3/4)
CIYAK FIX MINIMUMS				
S-LOC 27	1780-1 596 (600-1)	1780-1 3/4 596 (600-1 3/4)	1780-1 3/4 596 (600-1 3/4)	2040-2 3/4 856 (900-2 3/4)
CIRCLING	1800-1 616 (700-1)	1800-1 3/4 616 (700-1 3/4)	1800-1 3/4 616 (700-1 3/4)	2040-2 3/4 856 (900-2 3/4)

WAAS CH 90107 W27A	APP CRS 273°	Rwy Idg TDZE Apt Elev	5004 1184 1184
--	------------------------	-----------------------------	---

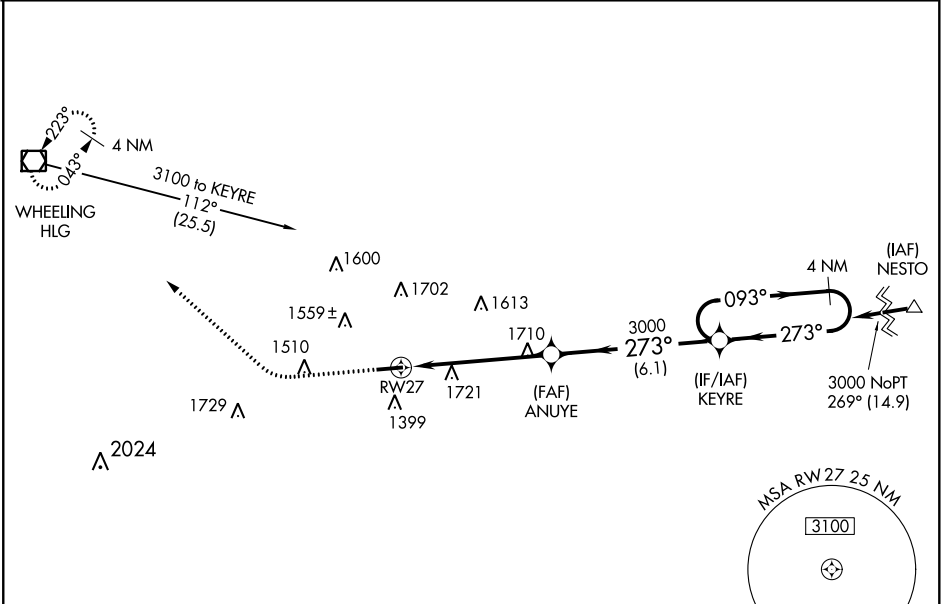
RNAV (GPS) RWY 27

WASHINGTON COUNTY (A.FJ)

⚠ For uncompensated Baro-VNAV systems, LNAV/VNAV NA below -17°C (2°F) or above 45°C (114°F). DME/DME RNP-0.3 NA. Helicopter visibility reduction below ¼ SM NA. Night Landing: Rwy 9 NA. VDP and Baro-VNAV NA when using Wheeling altimeter setting. When local altimeter setting not received, use Wheeling altimeter setting and increase all DA/MDA 40 feet, increase Circling Cat A and Cat D visibility ¼ mile.

⚠ MISSED APPROACH: Climb to 1700 then climbing right turn to 3300 direct HLG VOR/DME and hold.

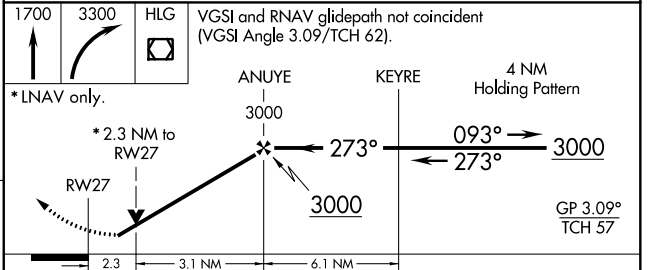
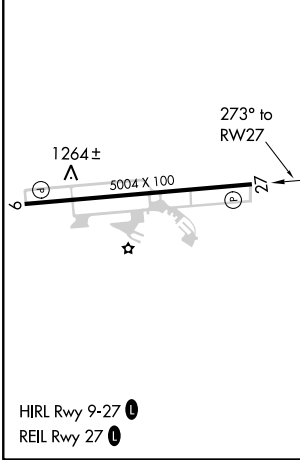
AWOS-3PT 119.175	PITTSBURGH APP CON 119.35 285.575	CLNC DEL 127.3	UNICOM 122.975 (CTAF)
----------------------------	---	--------------------------	---------------------------------



NE-4, 26 APR 2018 to 24 MAY 2018

NE-4, 26 APR 2018 to 24 MAY 2018

ELEV 1184	TDZE 1184
-----------	-----------



1700	3300	HLG	VGSI and RNAV glidepath not coincident (VGSI Angle 3.09/TCH 62).			
* LNAV only.						
RW27		ANUYE 3000	KEYRE	4 NM Holding Pattern		
2.3		3.1 NM	6.1 NM	3000		
CATEGORY	A	B	C	D		
LPV DA	1386-¾		202 (300-¾)			
LNAV/VNAV DA	2140-4		956 (1000-4)			
LNAV MDA	1980-1 796 (800-1)	1980-1¼ 796 (800-1¼)	1980-2½	796 (800-2½)		
CIRCLING	1980-1 796 (800-1)	1980-1¼ 796 (800-1¼)	1980-2½ 796 (800-2½)	2040-2¾ 856 (900-2¾)		

APP CRS 093°	Rwy Idg 5004
	TDZE 1184
	Apt Elev 1184

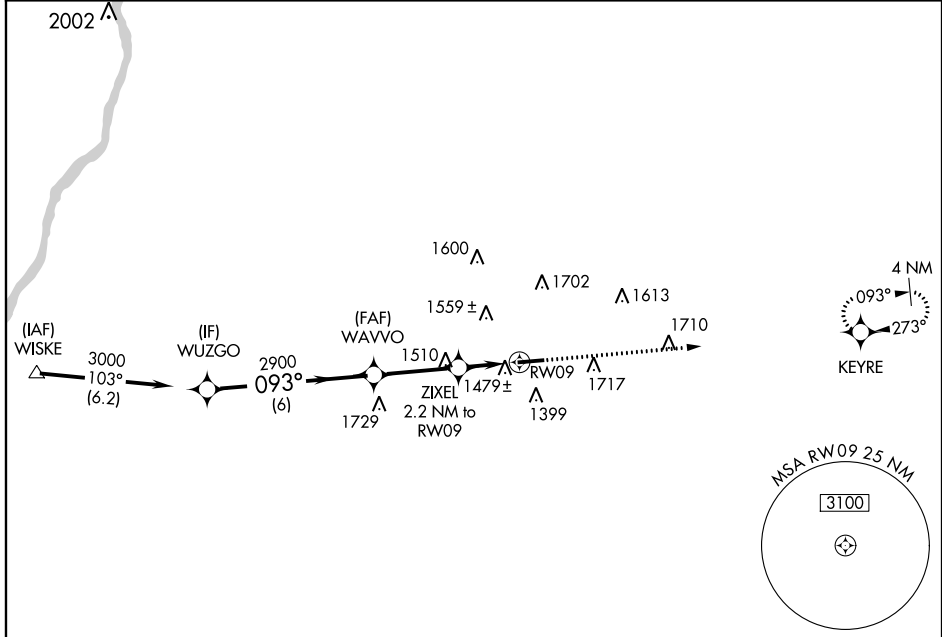
RNAV (GPS) RWY 9

WASHINGTON COUNTY (A.F.J)

▽ DME/DME RNP-0.3 NA. Procedure NA at night. When local altimeter setting not received, use Wheeling altimeter setting and increase all MDA 40 feet, and all Cat C/D visibilities ¼ mile.
▲ Helicopter visibility reduction below 1 SM NA.

MISSED APPROACH: Climb to 3000 direct KEYRE and hold.

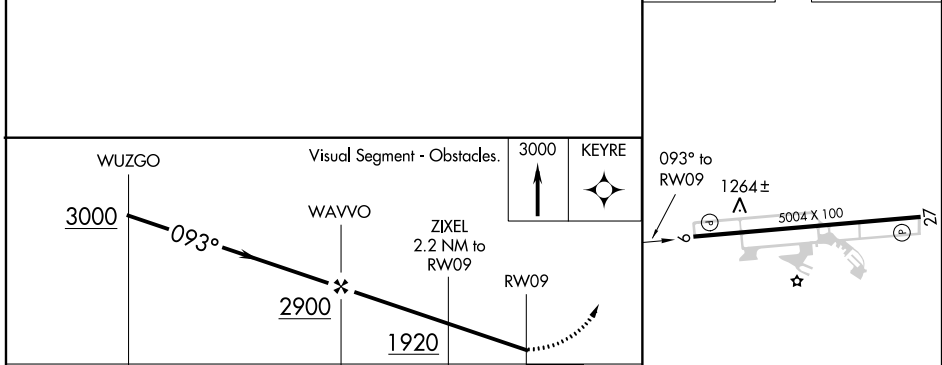
AWOS-3PT 119.175	PITTSBURGH APP CON 119.35 285.575	CLNC DEL 127.3	UNICOM 122.975 (CTAF) 0
----------------------------	---	--------------------------	-----------------------------------



NE-4, 26 APR 2018 to 24 MAY 2018

NE-4, 26 APR 2018 to 24 MAY 2018

ELEV 1184	TDZE 1184
-----------	-----------



CATEGORY	A	B	C	D
LNVA MDA	1740-1	556 (600-1)	1740-1 ⁵ / ₈	556 (600-1 ⁵ / ₈)
CIRCLING	1800-1	616 (700-1)	1800-1 ³ / ₄ 616 (700-1 ³ / ₄)	2040-2 ³ / ₄ 856 (900-2 ³ / ₄)

HIRL Rwy 9-27 **0**
 REIL Rwy 27 **0**