

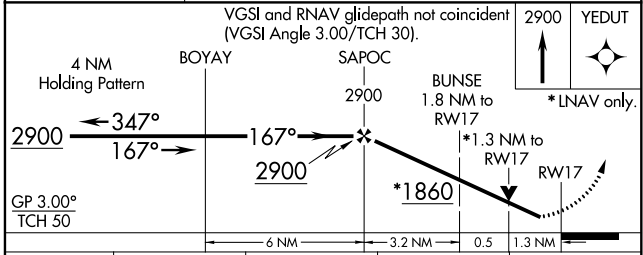
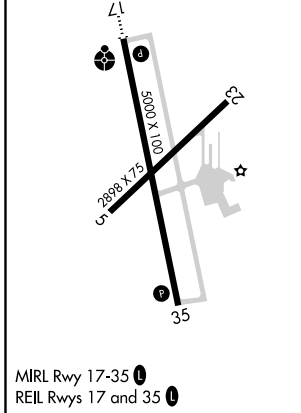
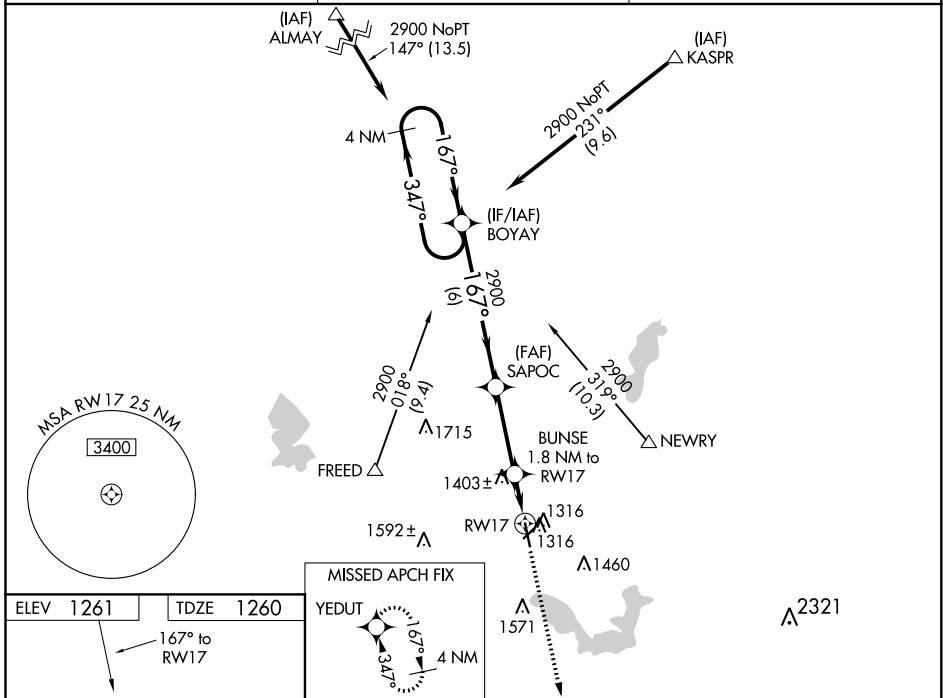
WAAS CH 49204 W17A	APP CRS 167°	Rwy Ldg TDZE Apt Elev	5000 1260 1261
----------------------------------------	------------------------	-----------------------------	-------------------------------------------

RNAV (GPS) RWY 17

ALBERT LEA MUNI (AEL)

RNP APCH.	ODALS 	MISSED APPROACH: Climb to 2900 direct YEDUT and hold.
-----------	-----------	----------------------------------------------------------

AWOS-3 109.8	ROCHESTER APP CON* 119.8 251.125	UNICOM 123.0 (CTAF) ①
------------------------	--------------------------------------------	---------------------------------



CATEGORY	A	B	C	D
LPV DA		1510-3/4	250 (300-3/4)	
LNAV/VNAV DA		1510-3/4	250 (300-3/4)	
LNAV MDA	1700-1	440 (500-1)	1700-1 1/4	440 (500-1 1/4)

NC-1, 19 MAY 2022 to 16 JUN 2022

NC-1, 19 MAY 2022 to 16 JUN 2022

WAAS CH 53625 W35A	APP CRS 347°	Rwy Idg 5000 TDZE 1261 Apt Elev 1261
----------------------------------------	------------------------	-----------------------------------------------------------------

RNAV (GPS) RWY 35

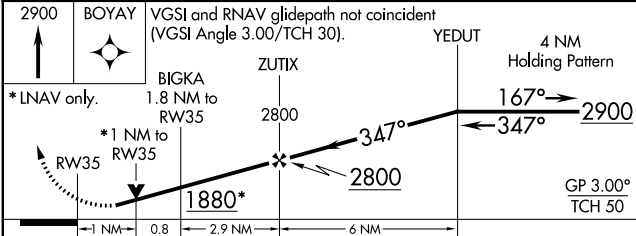
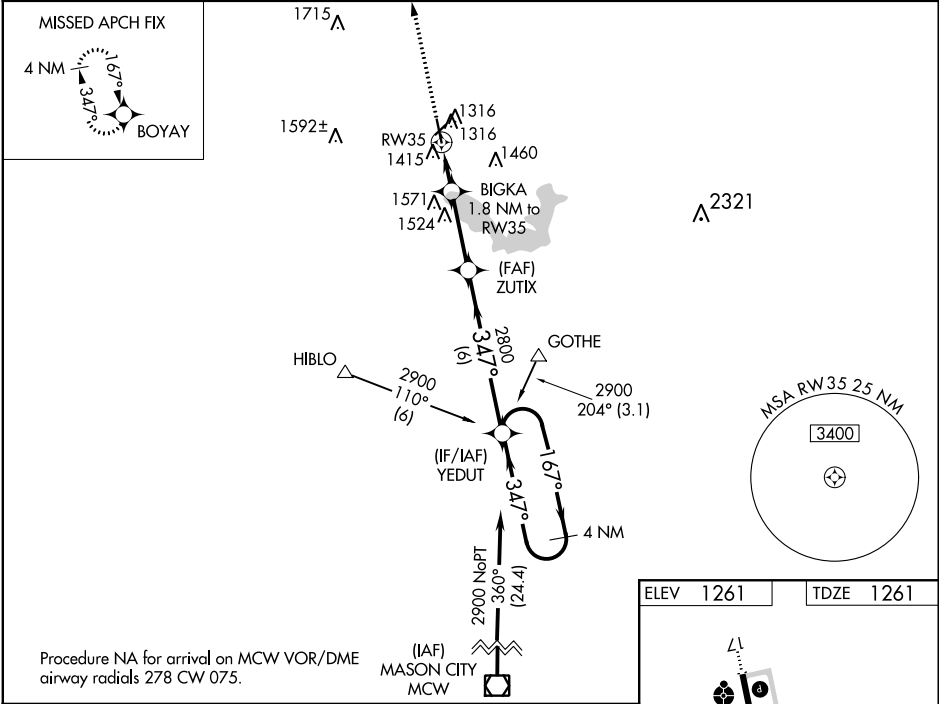
ALBERT LEA MUNI (A.E.L.)

RNP APCH.

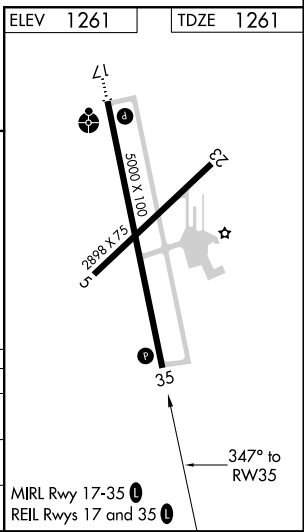
⚠ Baro-VNAV NA when using Austin altimeter setting. For uncompensated Baro-VNAV systems, LNAV/VNAV NA below -28°C or above 36°C. VDP NA with Austin altimeter setting. Rwy 35 helicopter visibility reduction below 3/4 SM NA. When local altimeter setting not received, use Austin altimeter setting and increase all DA 48 feet and all MDA 60 feet; increase LPV and LNAV/VNAV visibility 1/4 mile all Cats.

MISSED APPROACH: Climb to 2900 direct BOYAY and hold.

AWOS-3 109.8	ROCHESTER APP CON * 119.8 251.125	UNICOM 123.0 (CTAF)
------------------------	---------------------------------------------	-------------------------------



CATEGORY	A	B	C	D
LPV DA	1511-3/4		250 (300-3/4)	
LNAV/VNAV DA	1576-1		315 (400-1)	
LNAV MDA	1720-1 459 (500-1)		1720-1 3/8 459 (500-1 3/8)	



NC-1, 19 MAY 2022 to 16 JUN 2022

NC-1, 19 MAY 2022 to 16 JUN 2022

VOR/DME AEL	APP CRS	Rwy Idg	5000
109.8	173°	TDZE	1260
Chan 35		Apt Elev	1261

VOR RWY 17

ALBERT LEA MUNI (AEL)

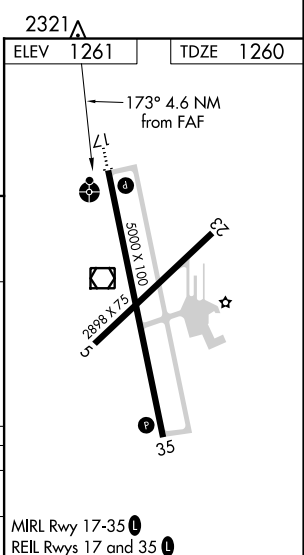
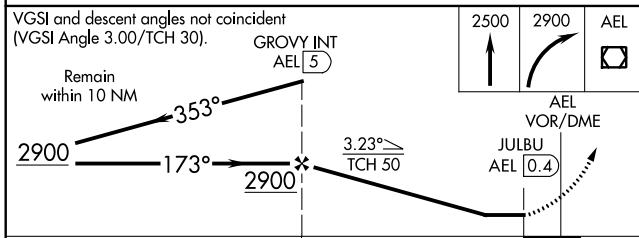
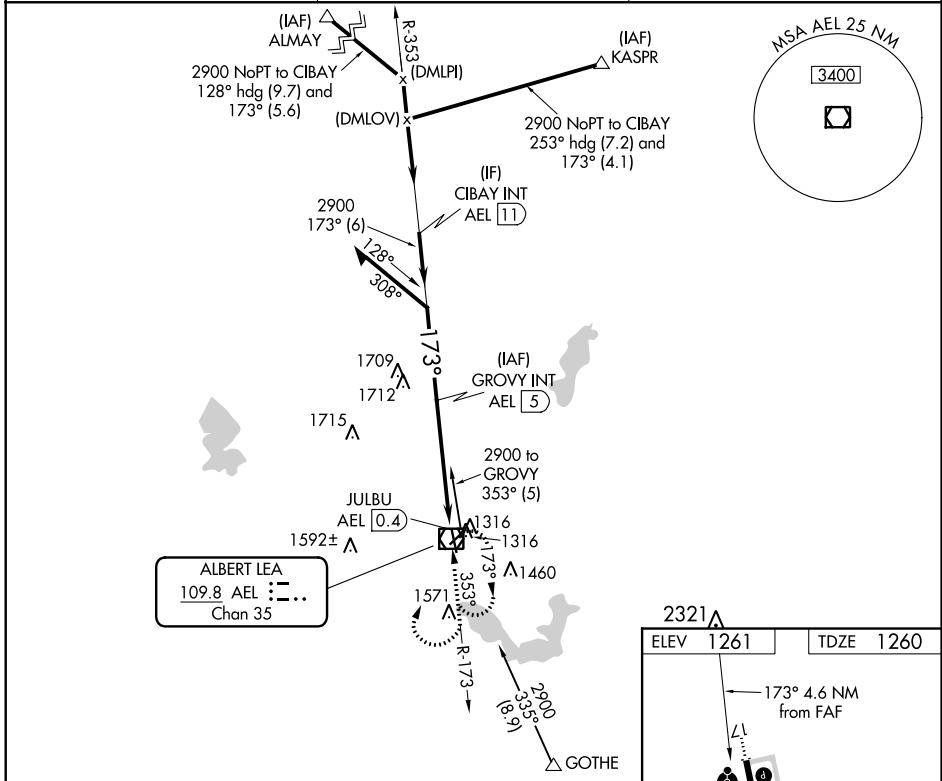
DME required.

⚠ Circling Rwy 5, 23 NA at night. Rwy 17 helicopter visibility reduction below ¼ SM NA. When local altimeter setting not received, use Austin altimeter setting: increase all MDA 60 feet; increase S-17 Cat C/D visibility ½ SM and Circling Cat A/C/D visibility ¼ SM.

ODALS

MISSED APPROACH: Climb to 2500 then climbing right turn to 2900 direct AEL VOR/DME and hold.

AWOS-3	ROCHESTER APP CON ★	UNICOM
109.8	119.8 251.125	123.0 (CTAF)



CATEGORY	A	B	C	D
S-17	2020-1	760 (800-1)	2020-2	760 (800-2)
CIRCLING	2020-1	2020-1¼	2020-2¼	2040-2½
	759 (800-1)	759 (800-1¼)	759 (800-2¼)	779 (800-2½)

NC-1, 19 MAY 2022 to 16 JUN 2022

NC-1, 19 MAY 2022 to 16 JUN 2022

VOR/DME AEL	APP CRS	Rwy Idg	5000
109.8	342°	TDZE	1261
Chan 35		Apt Elev	1261

VOR RWY 35

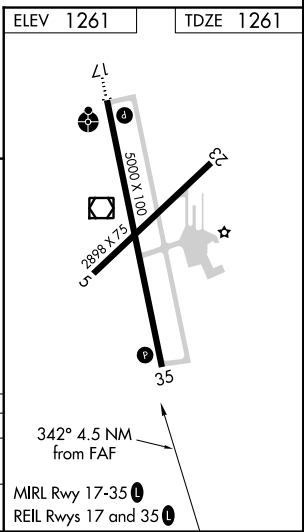
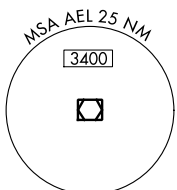
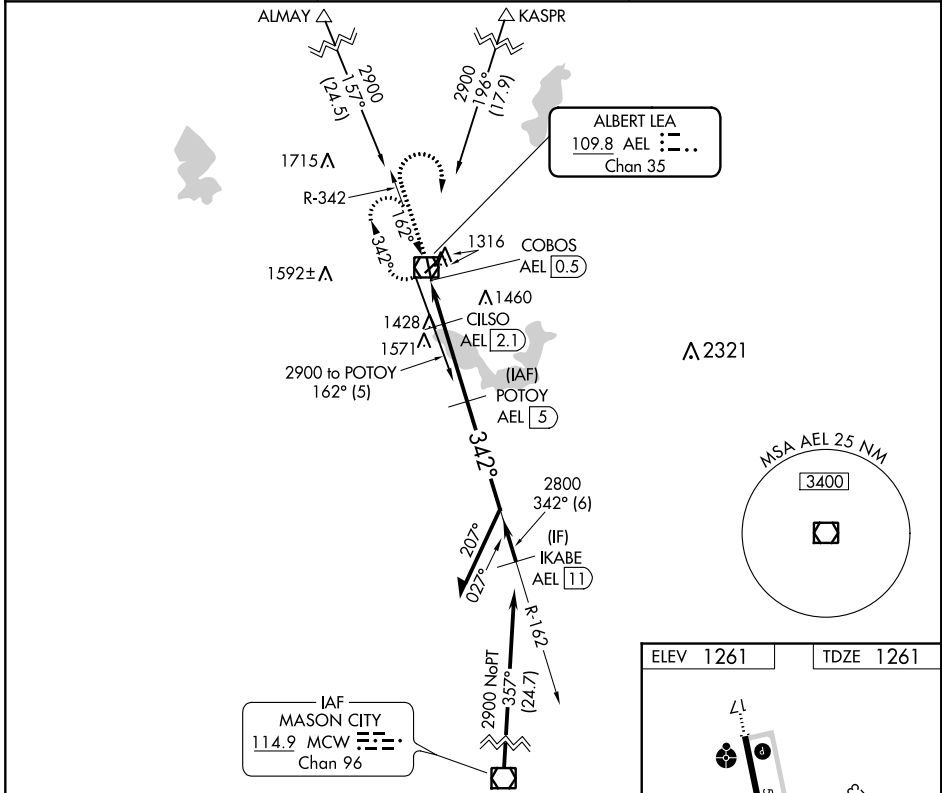
ALBERT LEA MUNI (AEL)

DME required.

▼ Circling Rwy 5, 23 NA at night.
 ▲ Rwy 35 helicopter visibility reduction below 3/4 SM NA.

MISSED APPROACH: Climb to 2500 then climbing right turn to 2900 direct AEL VOR/DME and hold.

AWOS-3 109.8	ROCHESTER APP CON * 119.8 251.125	UNICOM 123.0 (CTAF) 0
------------------------	---------------------------------------------	---------------------------------



2500	2900	AEL	POTOTOY AEL [5]	Remain within 10 NM
↑	↷	☐		
CILSO AEL [2.1]				
COBOS AEL [0.5]		≤ 3.31° TCH 50	1880	2800 VGSi and descent angles not coincident (VGSi Angle 3.00/TCH 30).
1.6 NM		2.9 NM		
CATEGORY	A	B	C	D
S-35	1740-1	479 (500-1)	1740-1 3/8	479 (500-1 3/8)
CIRCLING	1780-1	519 (600-1)	1920-1 3/4	2040-2 1/2
			659 (700-1 3/4)	779 (800-2 1/2)

NC-1, 19 MAY 2022 to 16 JUN 2022

NC-1, 19 MAY 2022 to 16 JUN 2022