

18312

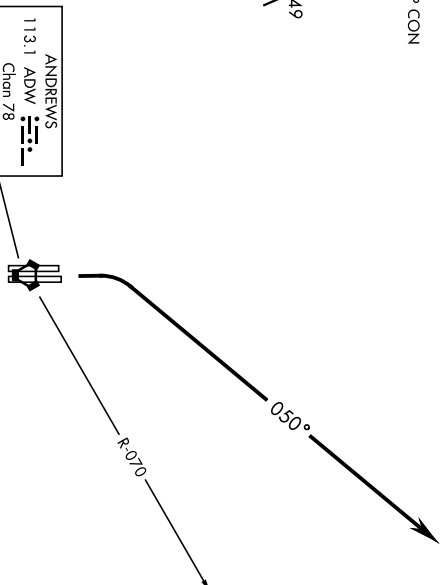
ANDREWS ONE DEPARTURE (ADW1•ADW)

JOINT BASE ANDREWS (KADW)
CAMP SPRINGS, MARYLAND

ATIS 133.675 251.05
CPDLC
GND CON 121.8 275.8
ANDREWS TOWER 118.4 349.0
POTOMAC TRACON DEP CON 125.65 348.725

S-561 [USAF]

1149
A



**RADAR VECTORS REQUIRED
WITHIN 10 NM
FROM DEPARTURE**

RADAR REQUIRED

DEPARTURE ROUTE DESCRIPTION

TAKE-OFF RWY 1L/1R: Climbing right turn to 3000 heading 050°. Expect radar vectors to intercept ADW VORTAC R-070.

ANDREWS ONE DEPARTURE (ADW1•ADW)

Orig 12OCT17

CAMP SPRINGS, MARYLAND
JOINT BASE ANDREWS (KADW)

CAMP SPRINGS ONE DEPARTURE (CAMP1•ADW)

JOINT BASE ANDREWS (KADW)

CAMP SPRINGS, MARYLAND

ATIS 133.675 251.05
 CPDLC
 GND CON 121.8 275.8
 ANDREWS TOWER 118.4 349.0
 POTOMAC TRACON DEP CON 118.95 257.2

SI-561 [USAF]

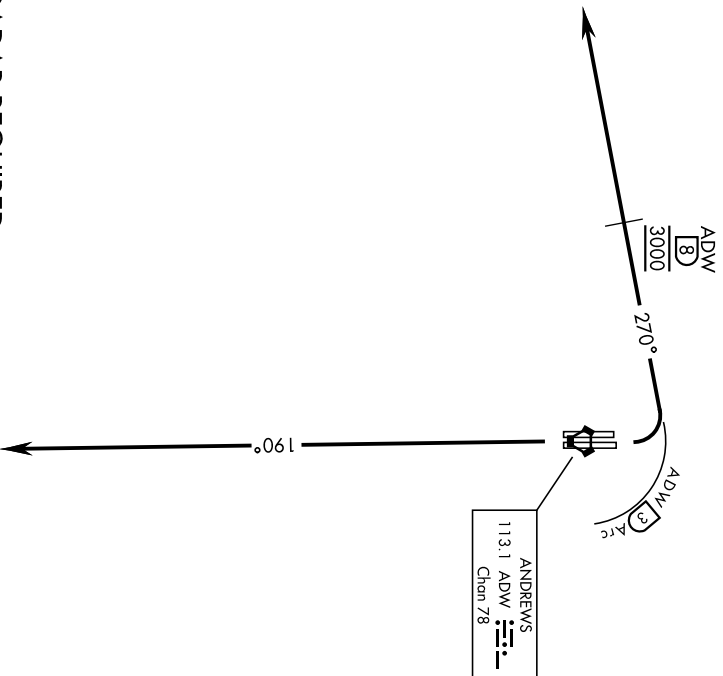
Rwy	Knots	60	120	180	240	300	360
11/R	V/V[ft/min]	380	760	1140	1520	1900	2280

ATC Climb Rate to 3000

If unable to make published climb gradient
 advise ATC prior to departure.

1149
 A

**RADAR VECTORS REQUIRED
 WITHIN 10 NM
 FROM DEPARTURE**



RADAR REQUIRED

DEPARTURE ROUTE DESCRIPTION

TAKE-OFF RWY 11/11R: Turn left climb on heading 270° within 3 DME of ADW VORTAC, cross ADW 8 DME at 3000. Expect radar vectors.

TAKE-OFF RWY 19R/19L: Climb on heading 190° to 3000. Expect radar vectors to the west.

CAMP SPRINGS ONE DEPARTURE (CAMP1•ADW)

CAMP SPRINGS, MARYLAND
 JOINT BASE ANDREWS (KADW)

20086

JEFSN ONE DEPARTURE (RNAV) (JEFSN1 • JEFNSN)

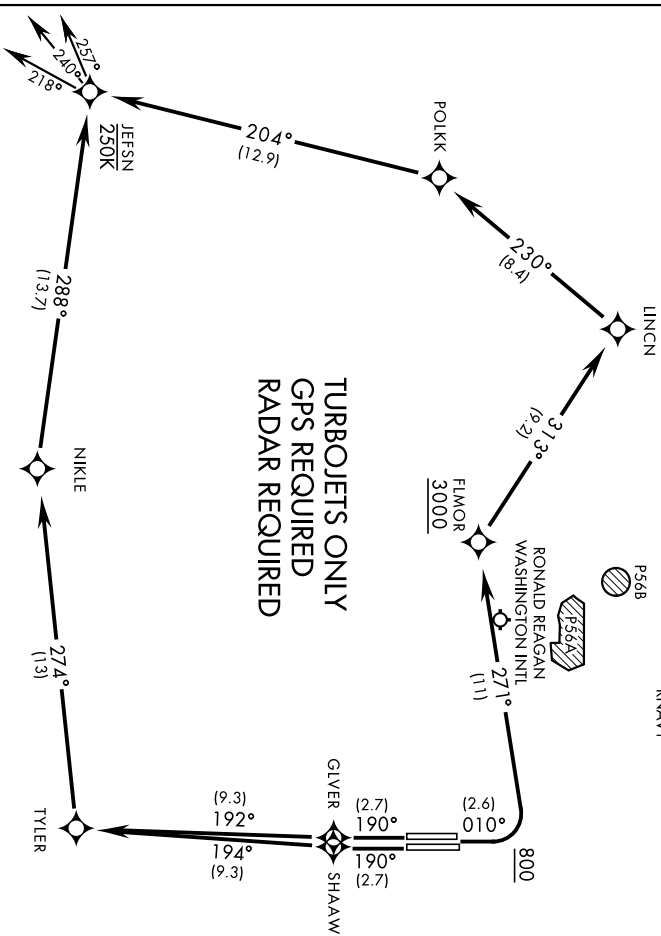
JOINT BASE ANDREWS (KADW)
CAMP SPRINGS, MARYLAND

ATIS 133.675 251.05
CPDLC
GND CON 121.8 275.8
ANDREWS TOWER 118.4 349.0
POTOMAC TRACON DEP CON 118.95 257.2

SI-561 [USAFI]
(PAGE 1 of 2)

TOP ALTITUDE:
3000

Max speed 250KIAS until JEFNSN.
Prohibited (P561) 1.5NM north of DCA avoid surface to FL80.
RNAV1



(TRANSITIONS CONTINUED
ON PAGE 2 of 2)

DEPARTURE ROUTE DESCRIPTION

TAKE-OFF RWY 1L/1R: Climb on heading 010° to 800, then climbing left turn to 3000 direct FLWOR. Then via depicted route to JEFNSN, thence...

TAKE-OFF RWY 19L: Climb on heading 190° direct SHAAW then via depicted route to JEFNSN, thence...

TAKE-OFF RWY 19R: Climb on heading 190° direct GLVER then via depicted route to JEFNSN, thence...

... on assigned transition. Maintain 3000, expect further clearance to filed alt within ten (10) minutes after departure.

- FLASK TRANSITION (JEFSN1 • FLASK)
- GLANC TRANSITION (JEFSN1 • GLANC)
- MAUIS TRANSITION (JEFSN1 • MAUIS)
- MELTN TRANSITION (JEFSN1 • MELTN)
- RRSN TRANSITION (JEFSN1 • RRSN)

JEFSN ONE DEPARTURE (RNAV) (JEFSN1 • JEFNSN)

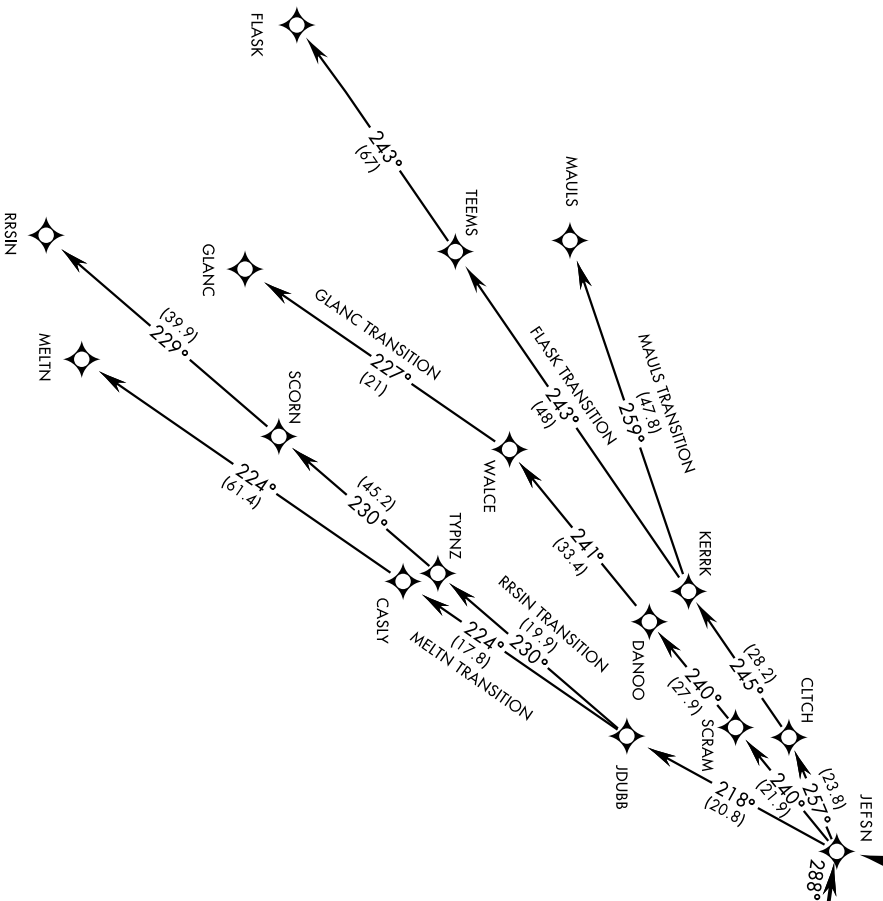
Amhd 3 26MAR20

CAMP SPRINGS, MARYLAND
JOINT BASE ANDREWS (KADW)

TOP ALTITUDE:
3000

SI-561 [USAFI]
(PAGE 2 of 2)

RNAV1



TURBOJETTS ONLY
GPS REQUIRED
RADAR REQUIRED

NOTE: Chart not to scale

JEFNSN ONE DEPARTURE (RNAV) (JEFNSN1 • JEFNSN)
Amr1 3 26MAR20

CAMP SPRINGS, MARYLAND
JOINT BASE ANDREWS (KADW)

18312

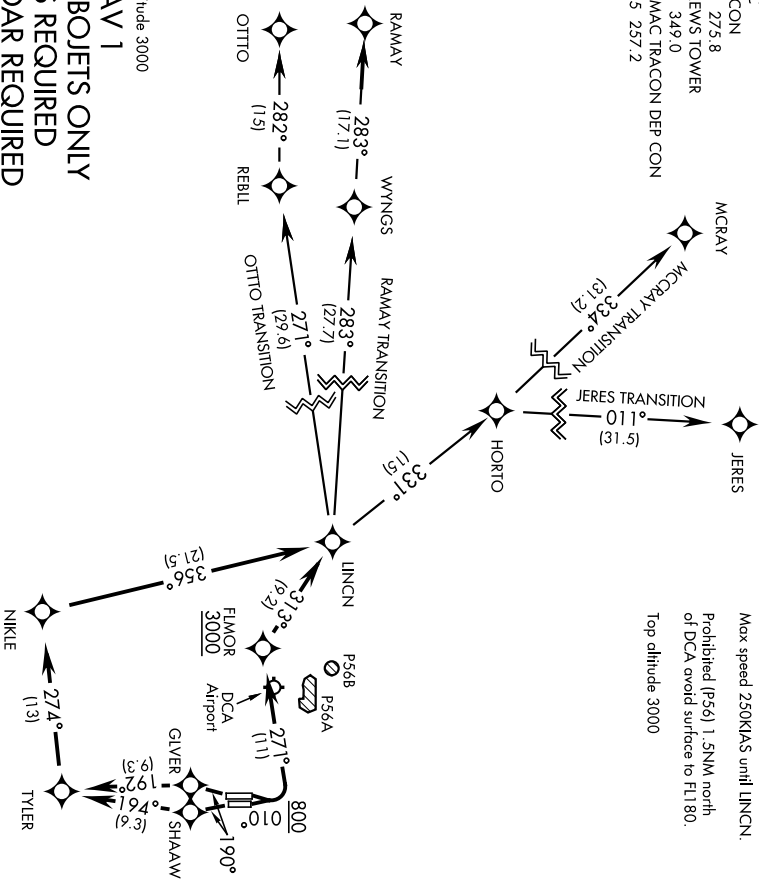
LINCN ONE DEPARTURE (RNAV) (LINCN1•LINCN)

JOINT BASE ANDREWS (KADW)
CAMP SPRINGS, MARYLAND

ATIS 133.675 251.05
CPDLC
GND CON 121.8 275.8
ANDREWS TOWER 118.4 349.0
POTOMAC TRACON DEP CON 118.95 257.2

SI-561 (USAF)

Max speed 250KIAS until LINCN.
Prohibited (P56) 1.5NM north of DCA avoid surface to FL80.
Top altitude 3000



Top altitude 3000
RNAV 1
TURBOJETS ONLY
GPS REQUIRED
RADAR REQUIRED

DEPARTURE ROUTE DESCRIPTION

RWY 01L/R: Climb heading 010° to 800, then climbing left turn to 3000 direct FLMOR. Then via depicted route to LINCN, thence...

RWY 19L: Climb heading 190° direct SHAAW then via depicted route to LINCN, thence...

RWY 19R: Climb heading 190° direct GYVER then via depicted route to LINCN, thence...

...on assigned transition. Maintain 3000, expect further clearance to be filed alt within ten (10) minutes after departure.

- JERES TRANSITION (LINCN1.JERES)
- MCCRAY TRANSITION (LINCN1.MCRAY)
- OTTO TRANSITION (LINCN1.OTTO)
- RAMAY TRANSITION (LINCN1.RAMAY)

LINCN ONE DEPARTURE (RNAV) (LINCN1•LINCN)

Amhd 1 17AUG17

CAMP SPRINGS, MARYLAND
JOINT BASE ANDREWS (KADW)

18312

MORNINGSIDE ONE DEPARTURE (MRNG1•ADW)

JOINT BASE ANDREWS (KADW)
CAMP SPRINGS, MARYLAND

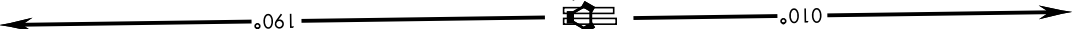
ATIS 133.675 251.05
CPDLC
GND CON
121.8 275.8
ANDREWS TOWER
118.4 349.0
POTOMAC TRACON DEP CON
125.65 348.725

SI-561 [USAF]

1149
A



**RADAR VECTORS REQUIRED
WITHIN 10 NM
FROM DEPARTURE**



RADAR REQUIRED

▼ DEPARTURE ROUTE DESCRIPTION

TAKE-OFF RWY 1L/1R: Climb on heading 010° to 3000. Expect radar vectors.

TAKE-OFF RWY 19R/19L: Climb on heading 190° to 3000. Expect radar vectors to the South or East.

MORNINGSIDE ONE DEPARTURE (MRNG1•ADW)

Orig 12OCT17

CAMP SPRINGS, MARYLAND
JOINT BASE ANDREWS (KADW)