

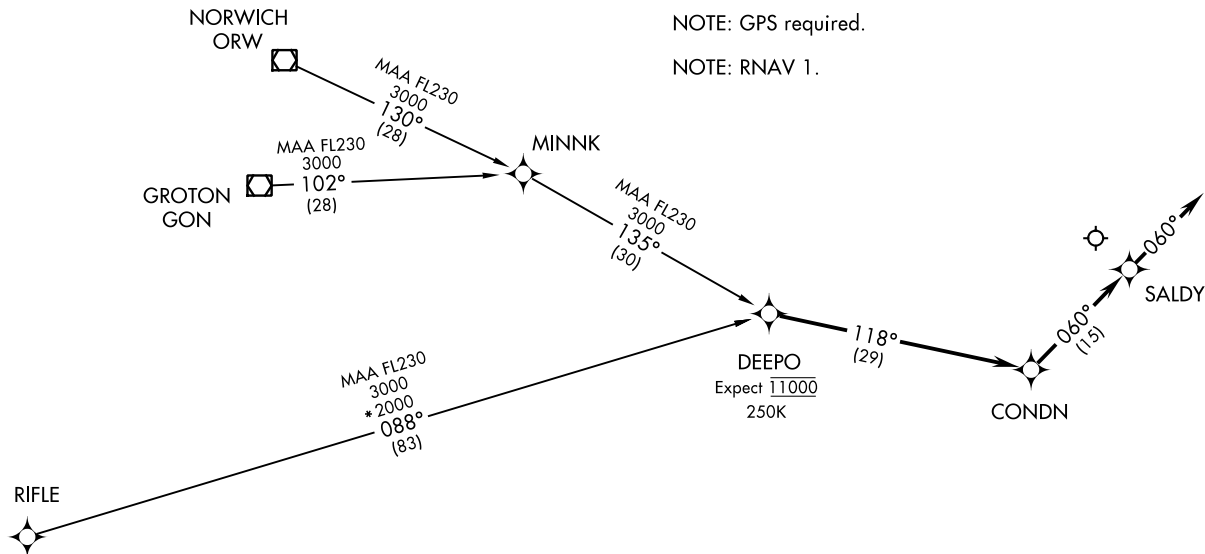
GROTON TRANSITION (GON.DEEPO1)  
NORWICH TRANSITION (ORW.DEEPO1)  
RIFLE TRANSITION (RIFLE.DEEPO1)

... From DEEPO, via 118° track to CONDN; thence via 060° track to SALDY. Depart SALDY heading 060°, expect radar vectors to final approach course.

NOTE: RADAR required.

NOTE: GPS required.

NOTE: RNAV 1.



NOTE: Chart not to scale.

DEEPO ONE ARRIVAL (RNAV)  
(DEEPO.DEEPO1) 161AND7

NANTUCKET, MASSACHUSETTS  
NANTUCKET MEMORIAL (A/CX)

BOSTON APP CON ★  
133.75 318.1  
NANTUCKET ATIS  
127.5  
NANTUCKET TOWER ★  
118.3 (CTAF)

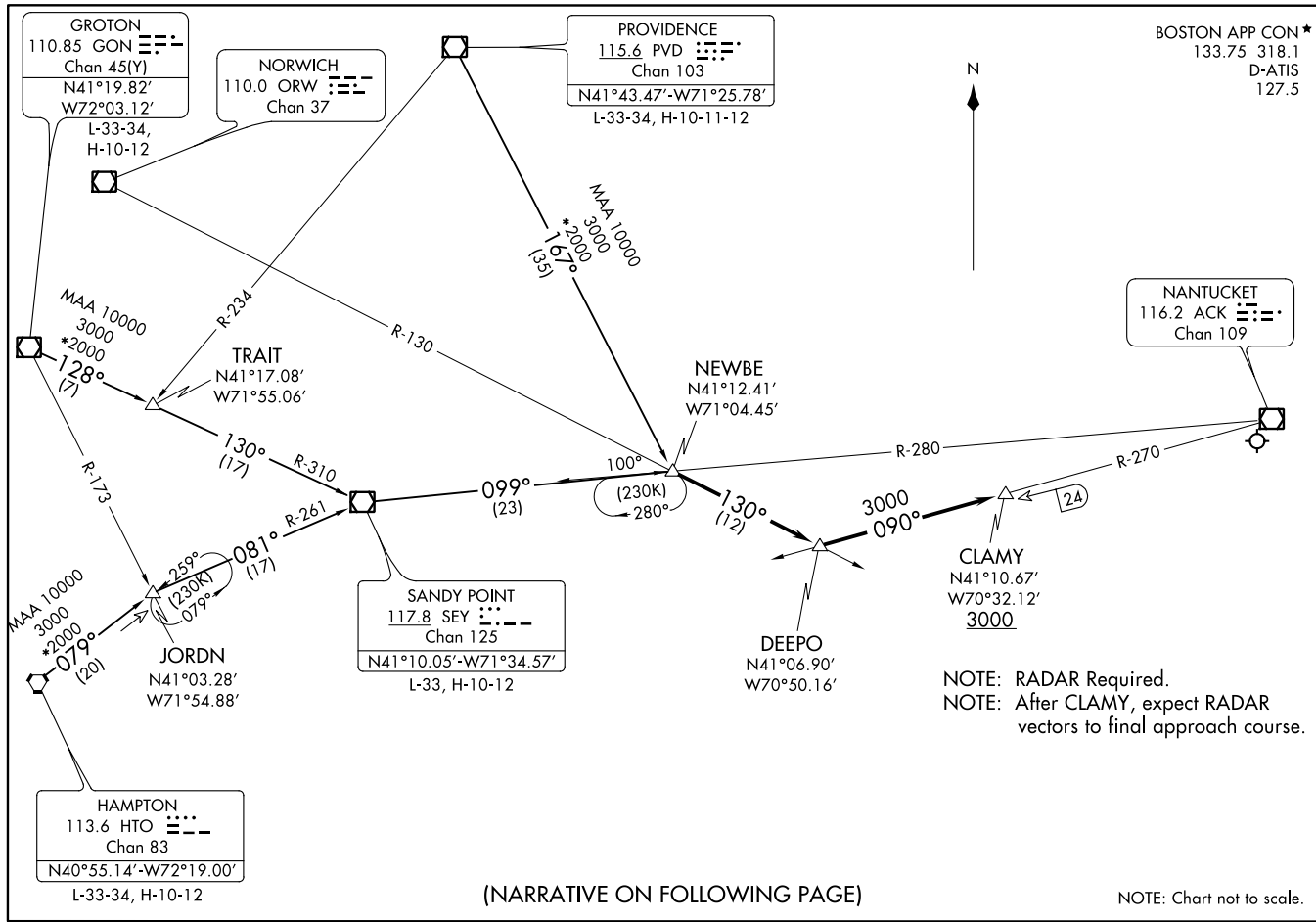
(DEEPO.DEEPO1) 18032  
DEEPO ONE ARRIVAL (RNAV)

AL-659 (FAA)

NANTUCKET MEMORIAL (A/CX)  
NANTUCKET, MASSACHUSETTS

NEWBE THREE ARRIVAL  
(NEWBE, NEWBES) 120CT17

NANTUCKET, MASSACHUSETTS  
NANTUCKET MEMORIAL (A/CX)



(NARRATIVE ON FOLLOWING PAGE)

NOTE: Chart not to scale.

(NEWBE, NEWBES) 18144  
NEWBE THREE ARRIVAL

AL-659 (FAA)

NANTUCKET MEMORIAL (A/CX)  
NANTUCKET, MASSACHUSETTS

BOSTON APP CON\*  
133.75 318.1  
D-ATIS  
127.5

NOTE: RADAR Required.  
NOTE: After CLAMY, expect RADAR  
vectors to final approach course.

## ARRIVAL DESCRIPTION

GROTON TRANSITION (GON.NEWBE3): From over GON VOR/DME on GON R-128 to TRAIT INT, then on SEY R-310 to SEY VOR/DME, then on SEY R-099 to NEWBE. Thence . . . .

HAMPTON TRANSITION (HTO.NEWBE3): From over HTO VORTAC on HTO R-079 to JORDN INT, then on SEY R-261 to SEY VOR/DME, then on SEY R-099 to NEWBE. Thence . . . .

PROVIDENCE TRANSITION (PVD.NEWBE3): From over PVD VOR/DME on PVD R-167 to NEWBE. Thence . . . .

. . . . From over NEWBE on ORW R-130 to DEEPO, then on ACK R-270 to cross CLAMY at or above 3000. After CLAMY, expect vectors to the final approach course.

NE-1, 05 DEC 2019 to 02 JAN 2020

NE-1, 05 DEC 2019 to 02 JAN 2020