

VOR/DME RBA 108.2 Chan 19	APP CRS 142°	Rwy Idg TDZE Apt Elev	3000 1073 1073
--	------------------------	-----------------------------	---

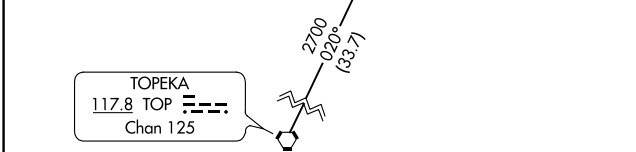
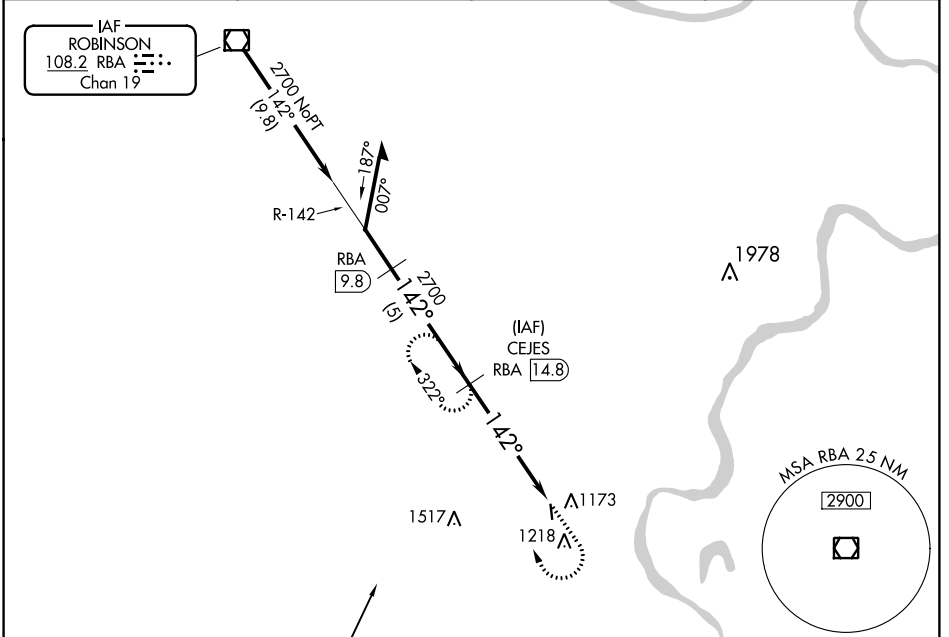
VOR/DME RWY 16

AMELIA EARHART (K59)

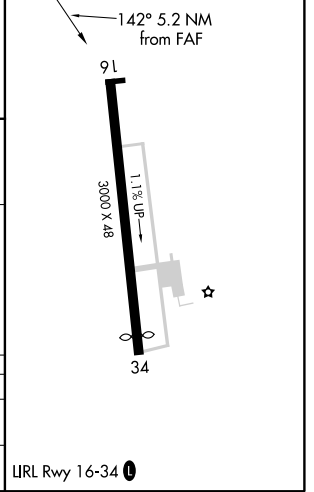
NA Use Kansas City Intl altimeter setting.

MISSED APPROACH: Climb to 2000 then climbing right turn to 2700 via RBA R-142 to CEJES/RBA 14.8 DME and hold.

AWOS-3 123.675	ST. JOSEPH APP CON ★ 120.35 360.8	UNICOM 122.8 (CTAF) 0
--------------------------	---	---------------------------------



ELEV 1073	TDZE 1073
-----------	-----------



Remain within 10 NM	CEJES RBA 14.8	2000	2700	CEJES RBA 14.8
2700	322°	↑	RBA R-142	RBA 14.8
2700	142°			RBA 19.8
				5 NM
				0.2

CATEGORY	A	B	C	D
S-16	1540-1	467 (500-1)		NA
CIRCLING	1600-1	527 (600-1)		NA

IURL Rwy 16-34 0

NC-2, 01 FEB 2018 to 01 MAR 2018

NC-2, 01 FEB 2018 to 01 MAR 2018