

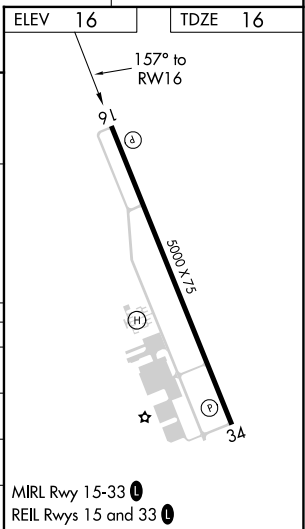
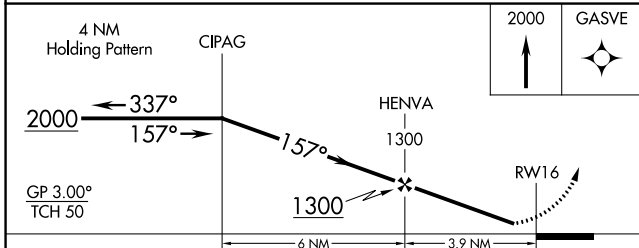
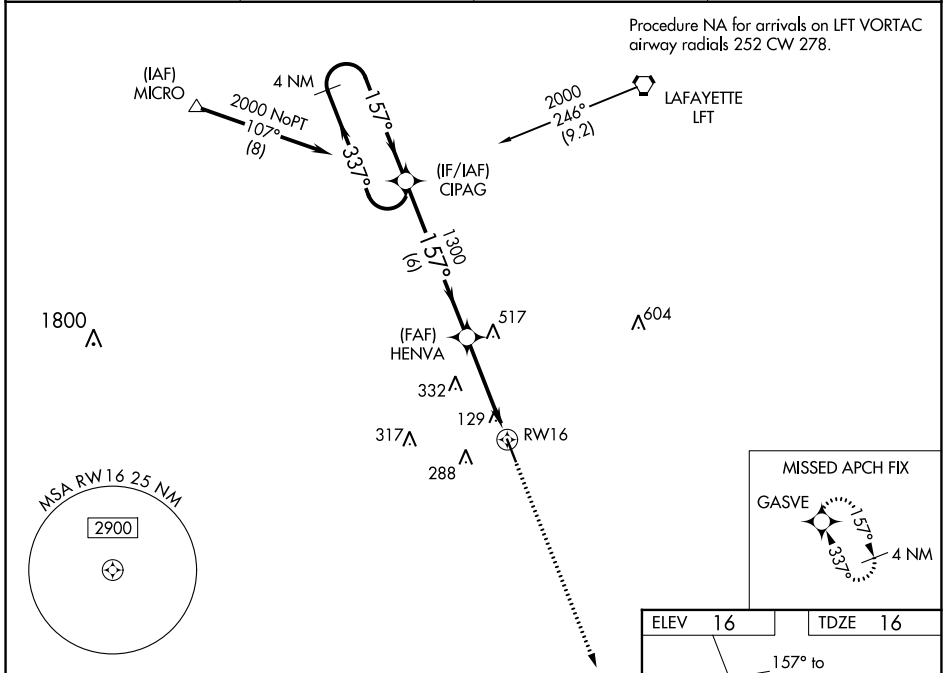
WAAS CH <b>78023</b> <b>W16A</b>	APP CRS <b>157°</b>	Rwy Idg TDZE Apt Elev	<b>5000</b> <b>16</b> <b>16</b>
--	------------------------	-----------------------------	---------------------------------------

# RNAV (GPS) RWY 16

ABBEVILLE CHRIS CRUSTA MEMORIAL (IYA)

RNP APCH.	Baro-VNAV NA when using New Iberia altimeter setting. For uncompensated Baro-VNAV systems, LNAV/VNAV NA below -15°C (5°F) or above 54°C (130°F). Helicopter visibility reduction below 3/4 SM NA. When local altimeter setting not received, use New Iberia altimeter setting and increase all DA 27 feet and all MDA 40 feet.	MISSED APPROACH: Climb to 2000 direct GASVE and hold.
-----------	--	--

AWOS-3 <b>118.875</b>	LAFAYETTE APP CON ★ <b>121.1 268.7</b>	GCO <b>135.075</b>	UNICOM <b>122.8 (CTAF) 0</b>
--------------------------	---	-----------------------	---------------------------------



CATEGORY	A	B	C	D
LPV DA	266-1	250 (300-1)		NA
LNAV/VNAV DA	279-1	263 (300-1)		NA
LNAV MDA	380-1	364 (400-1)		NA
CIRCLING	520-1 504 (600-1)	600-1 584 (600-1)	700-2 684 (700-2)	NA

# RNAV (GPS) RWY 16

SC-4, 03 DEC 2020 to 31 DEC 2020

SC-4, 03 DEC 2020 to 31 DEC 2020