

TEJAS FOUR ARRIVAL (RNAV) Transition Routes

HOUSTON APP CON  
119.175 291.675  
D-ATIS  
124.05

SAN ANTONIO  
SAT

SMAKR

7000  
\*2000  
095°  
(63)

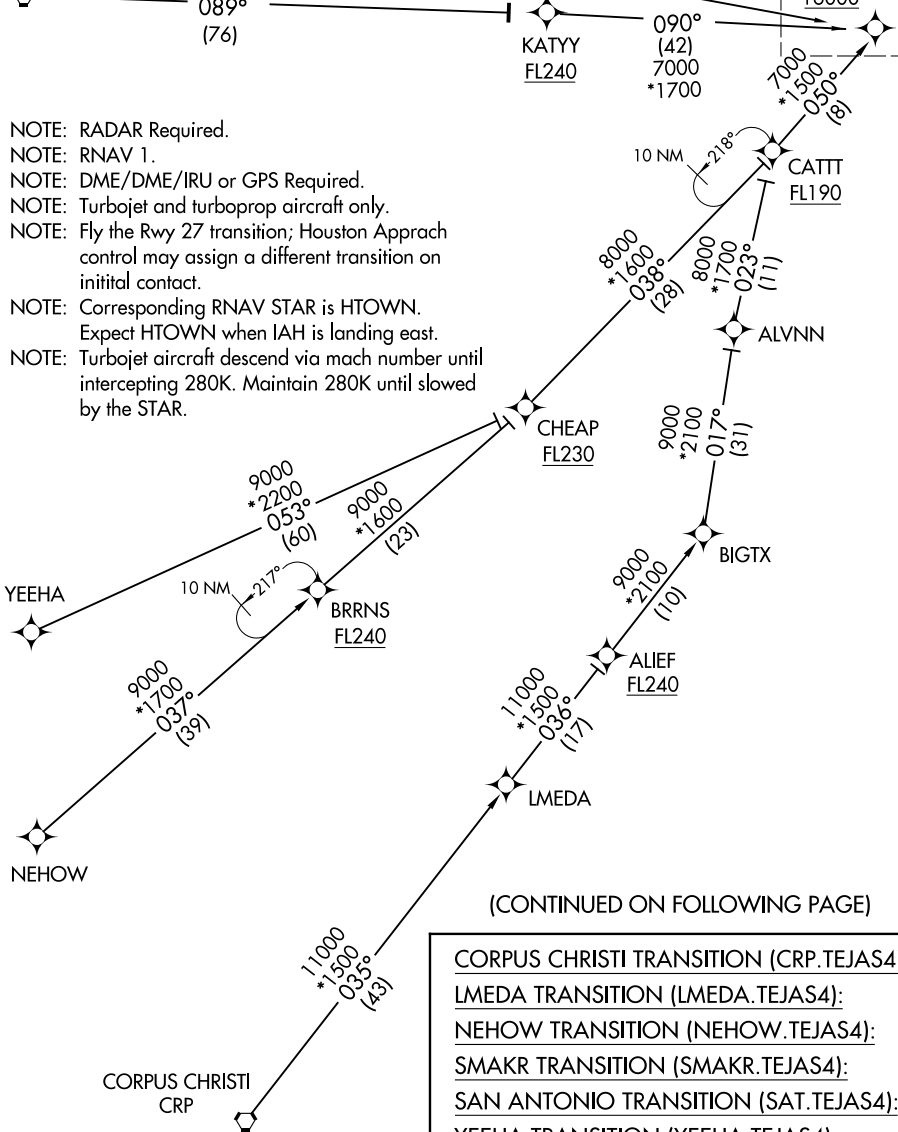
KATYY  
FL240

090°  
(42)  
7000  
\*1700

See following page  
for Arrival Routes.

GMANN  
FL190 280K  
16000

- NOTE: RADAR Required.
- NOTE: RNAV 1.
- NOTE: DME/DME/IRU or GPS Required.
- NOTE: Turbojet and turboprop aircraft only.
- NOTE: Fly the Rwy 27 transition; Houston Approach control may assign a different transition on initial contact.
- NOTE: Corresponding RNAV STAR is HTOWN. Expect HTOWN when IAH is landing east.
- NOTE: Turbojet aircraft descend via mach number until intercepting 280K. Maintain 280K until slowed by the STAR.



(CONTINUED ON FOLLOWING PAGE)

- CORPUS CHRISTI TRANSITION (CRP.TEJAS4):
- LMEDA TRANSITION (LMEDA.TEJAS4):
- NEHOW TRANSITION (NEHOW.TEJAS4):
- SMAKR TRANSITION (SMAKR.TEJAS4):
- SAN ANTONIO TRANSITION (SAT.TEJAS4):
- YEEHA TRANSITION (YEEHA.TEJAS4):

NOTE: Chart not to scale.

SC-5, 12 SEP 2019 to 10 OCT 2019

SC-5, 12 SEP 2019 to 10 OCT 2019

ARRIVAL ROUTE DESCRIPTION

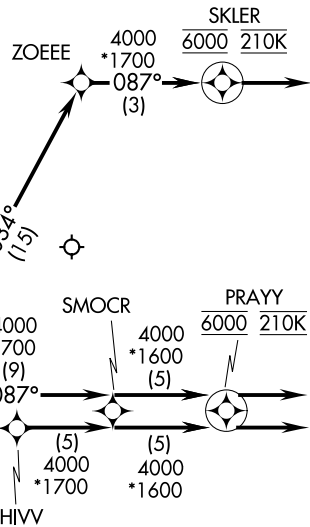
From GMANN on track 058° to cross CITTE at or below 16000, then on track 059° to cross TEJAS at or above 12000, at or below 14000 and at 250K.

LANDING RUNWAY 26L: From TEJAS on track 059° to cross RIDLR at or below 10000, then on track 059° to cross BEEEP at or below 8000, then on track 059° to cross HOWLN at 6000 and at 240K, then on track 087° to SMOCR, then on track 087° to cross PRAYY at 6000 and at 210K, then on track 087°. Expect vectors to final approach course.

LANDING RUNWAY 26R: From TEJAS on track 059° to cross RIDLR at or below 10000, then on track 059° to cross BEEEP at or below 8000, then on track 059° to cross HOWLN at 6000 and at 240K, then on track 034° to ZOEER, then on track 087° to cross SKLER at 6000 and at 210K, then on track 087°. Expect vectors to final approach course.

LANDING RUNWAY 27: From TEJAS on track 059° to cross RIDLR at or below 10000, then on track 059° to cross BEEEP at or below 8000, then on track 059° to cross HOWLN at 6000 and at 240K, then on track 087° to SHIVV, then on track 087° to SMOCR, then on track 087° to cross PRAYY at 6000 and at 210K, then on track 087°. Expect vectors to final approach course.

HOUSTON APP CON  
119.175 291.675  
D-ATIS  
124.05



- NOTE: RADAR Required.
- NOTE: RNAV 1.
- NOTE: DME/DME/IRU or GPS Required.
- NOTE: Turbojet and turboprop aircraft only.
- NOTE: Fly the Rwy 27 transition; Houston Approach control may assign a different transition on initial contact.
- NOTE: Corresponding RNAV STAR is HTOWN. Expect HTOWN when IAH is landing east.
- NOTE: Turbojet aircraft descend via mach number until intercepting 280K. Maintain 280K until slowed by the STAR.

NOTE: Chart not to scale.

(GMANN, TEJAS4) 21JUL16  
 TEJAS FOUR ARRIVAL (RNAV)  
 Arrival Routes  
 GEORGE BUSH INTERCONTINENTAL/HOUSTON (IAH)  
 HOUSTON, TEXAS

(GMANN, TEJAS4) 1922Z  
 TEJAS FOUR ARRIVAL (RNAV)  
 Arrival Routes  
 AL:5461 (FAA)  
 GEORGE BUSH INTERCONTINENTAL/HOUSTON (IAH)  
 HOUSTON, TEXAS