

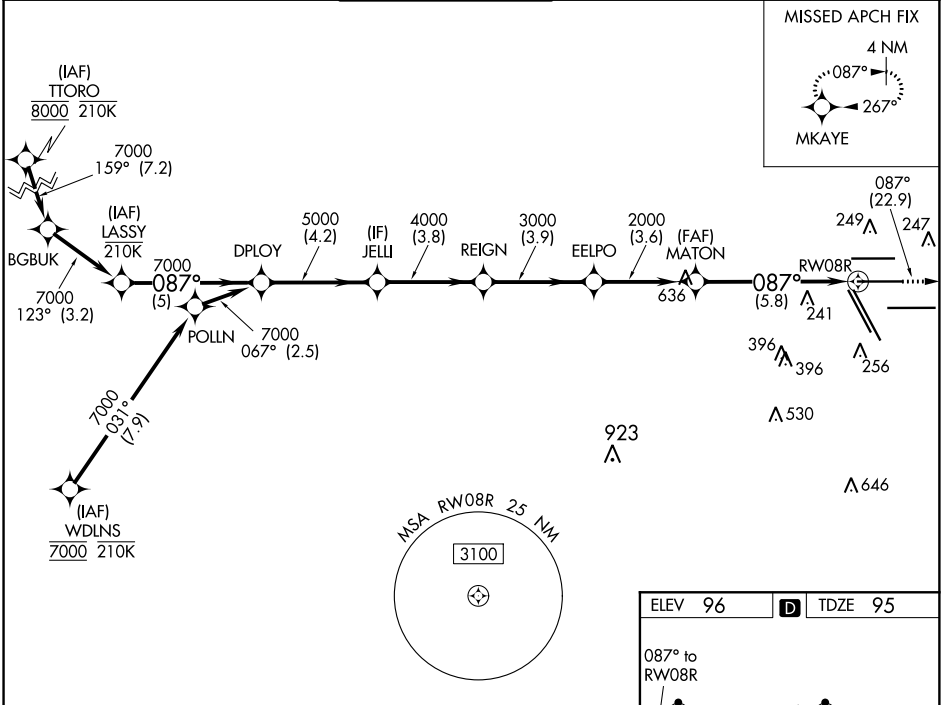
APP CRS	Rwy Idg	9402
087°	TDZE	95
	Apft Elev	96

RNAV (RNP) Y RWY 8R

GEORGE BUSH INTERCONTINENTAL/HOUSTON (IAH)

RNP AR APCH.	MALSR	MISSED APPROACH: Climb to 3000 on track 087° to MKAYE and hold.
<p>For uncompensated Baro-VNAV systems, procedure NA below -3°C or above 54°C. For inop ALS increase RNP 0.13 all Cats visibility to RVR 4500, RNP 0.14 all Cats visibility to RVR 5600, RNP 0.30 all Cats visibility to 1½ SM. Simultaneous approach authorized.</p>		

D-ATIS	HOUSTON APP CON	HOUSTON TOWER	GND CON	CLNC DEL	CPDLC
124.05	120.05 379.1 EAST 124.35 316.15 WEST	125.35 290.2	118.575	128.1	



SC-5, 11 OCT 2018 to 08 NOV 2018

SC-5, 11 OCT 2018 to 08 NOV 2018

VGSi and RNAV glidepath not coincident (VGSi Angle 3.00/TCH 72).		3000	tr	087°	MKAYE
LASSY	DPLOY	JELLI	REIGN	EELPO	MATON
7000	7000	5000	4000	3000	2000
GP 3.00°					
TCH 55					
	5 NM	4.2 NM	3.8	3.9	3.6
	A	B	C	D	
RNP 0.13 DA		383/40	288 (300-¾)		
RNP 0.14 DA		441/40	346 (400-¾)		
RNP 0.30 DA		492/45	397 (400-¾)		

ELEV 96	TDZE 95
---------	---------

Detailed diagram of the RWY 8R approach area. It shows various altitudes (e.g., 9000 X 150, 129 X 150, 193, 142, 259, 189, 207, 247, 203, 172) and waypoints (e.g., TORO, LASSY, DPLOY, JELLI, REIGN, EELPO, MATON, RW08R, MKAYE). The diagram also shows the terrain profile and the RNP Y RWY 8R track.

TDZ/CL Rwys 8R, 8L, 15R, 26R, 26L, 27 and 33L
HIRL all Rwys

AUTHORIZATION REQUIRED