


| | | |
|--|------------------------|--|
| WAAS CH 72926 W09A | APP CRS 087° | Rwy Idg 10000 TDZE 91 Apt Elev 96 |
|--|------------------------|--|

RNAV (GPS) Z RWY 9

GEORGE BUSH INTERCONTINENTAL/HOUSTON (IAH)

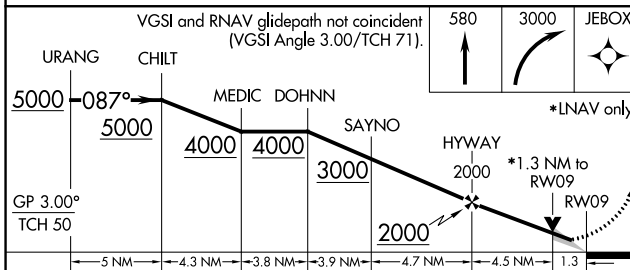
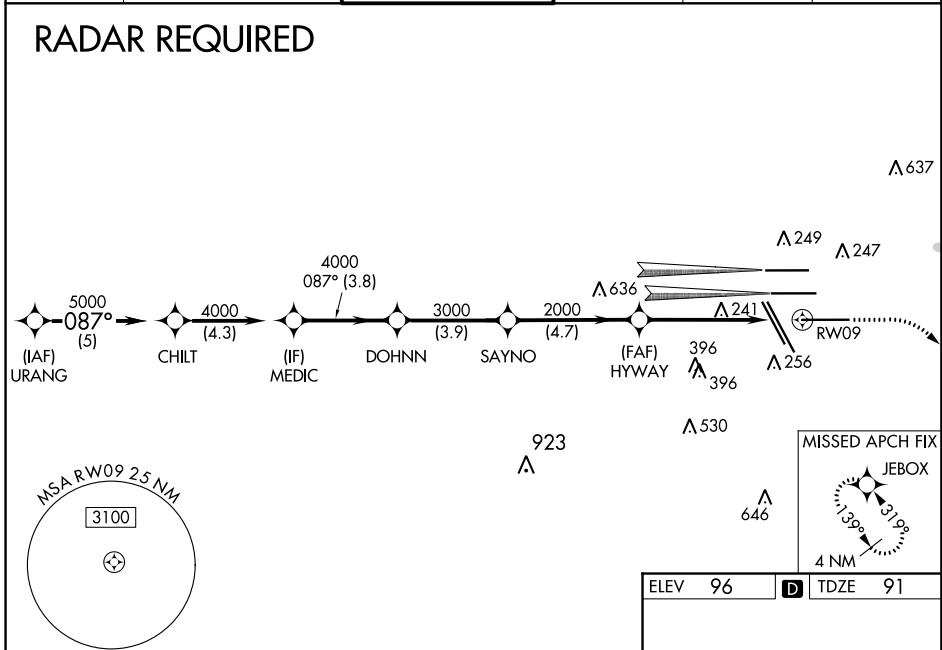
⚠ For uncompensated Baro-VNAV systems, LNAV/VNAV NA below -3°C (27°F) or above 54°C (130°F). For inop MALSR, increase LPV Cat E visibility to RVR 4000, LNAV/VNAV Cat E visibility to 1½ mile, and LNAV Cat C/D/E visibility to 1¾ mile. Simultaneous approach authorized with Rwy 8L/R. DME/DME RNP-0.3 NA. LNAV procedure NA during simultaneous operations. Use of FD or AP providing RNAV track guidance required during simultaneous operations.
** RVR 1800 authorized with use of FD or HUD to DA.

MALSR 

MISSED APPROACH: Climb to 580 then climbing right turn to 3000 direct JEBOX and hold.

| | | | | | |
|-------------------------|--|--------------------------------------|---------------------------|--------------------------|-------|
| D-ATIS 124.05 | HOUSTON APP CON 120.05 379.1 EAST 124.35 316.15 WEST | HOUSTON TOWER 135.15 290.2 | GND CON 118.575 | CLNC DEL 128.1 | CPDLC |
|-------------------------|--|--------------------------------------|---------------------------|--------------------------|-------|

RADAR REQUIRED



| | |
|---------|---------|
| ELEV 96 | TDZE 91 |
|---------|---------|

087° to RWY 9

TDZ/CL Rwy 8R, 8L, 15R, 26R, 26L, 27 and 33L
HIRL all Rwy

| CATEGORY | A | B | C | D | E |
|--------------|--------|-------------|-------------|-------------|---|
| LPV DA** | 291/24 | | 200 (200-½) | | |
| LNAV/VNAV DA | 525/50 | | 434 (500-1) | | |
| LNAV MDA | 580/24 | 489 (500-½) | 580/50 | 489 (500-1) | |

SC-5, 25 APR 2019 to 23 MAY 2019

SC-5, 25 APR 2019 to 23 MAY 2019