

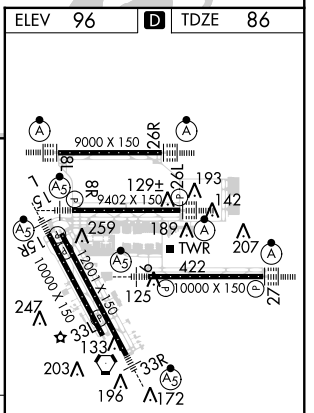
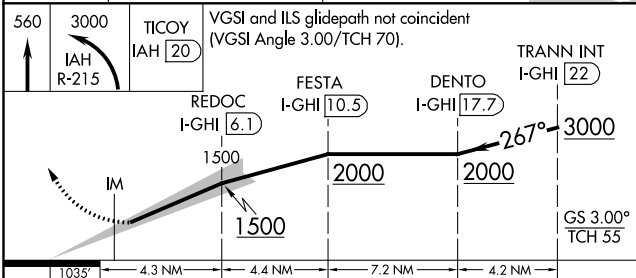
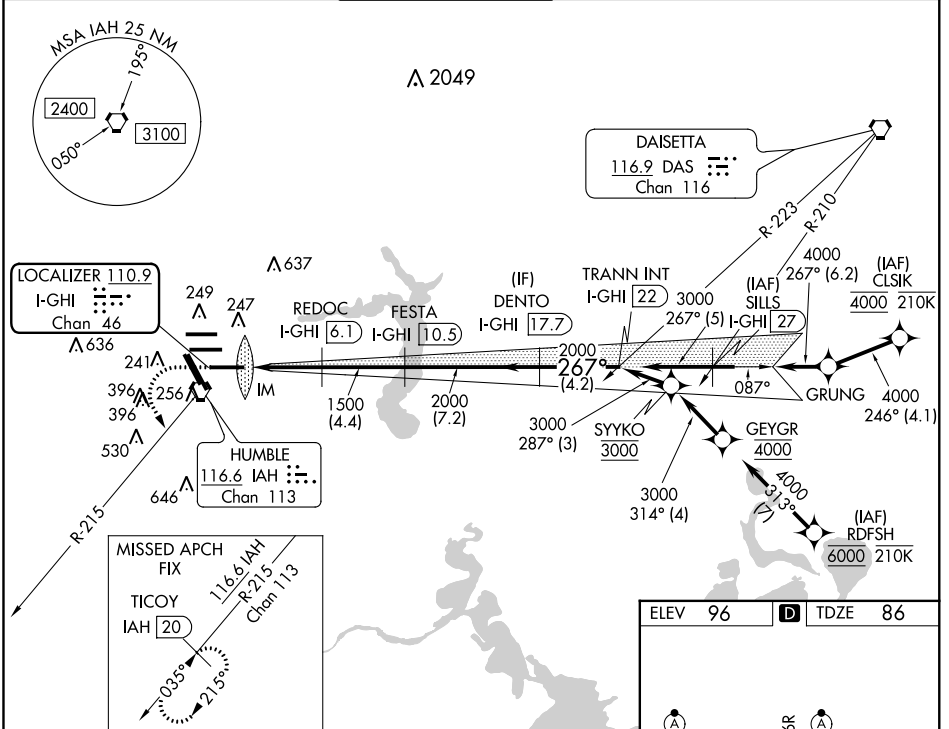
LOC/DME I-GHI 110.9 Chan 46	APP CRS 267°	Rwy Idg 10000 TDZE 86 Apt Elev 96
---	------------------------	--

ILS RWY 27 (SA CAT I)

GEORGE BUSH INTERCONTINENTAL/HOUSTON (IAH)

DME required. From CLSIK, RDFS: RNAV 1-GPS required. RNAV 1-GPS and RADAR required for procedure entry.	ALSF-2 	MISSED APPROACH: Climb to 560 then climbing left turn to 3000 on IAH VORTAC R-215 to TICOY/IAH 20 DME and hold.
Simultaneous approach authorized with Rwy 26L/R. Requires specific OPSPEC, MSPEC, or LOA approval and use of HUD to DH.		

D-ATIS 124.05	HOUSTON APP CON 120.05 379.1 EAST 124.35 316.15 WEST	HOUSTON TOWER 135.15 290.2	GND CON 118.575	CLNC DEL 128.1	CPDLC
-------------------------	--	--------------------------------------	---------------------------	--------------------------	-------



SA CATEGORY I ILS - SPECIAL AIRCREW & AIRCRAFT CERTIFICATION REQUIRED

TDZ/CL Rwys 8R, 8L, 15R, 26R, 26L, 27 and 33L
 HIRL all Rwys

SC-5, 20 JUN 2019 to 18 JUL 2019

SC-5, 20 JUN 2019 to 18 JUL 2019