

LOC/DME I-JYV <b>109.7</b> Chan <b>34</b>	APP CRS <b>267°</b>	Rwy Idg <b>9402</b> TDZE <b>95</b> Apt Elev <b>96</b>
---	------------------------	---

# ILS RWY 26L (SA CAT I)

GEORGE BUSH INTCNL/HOUSTON (IAH)

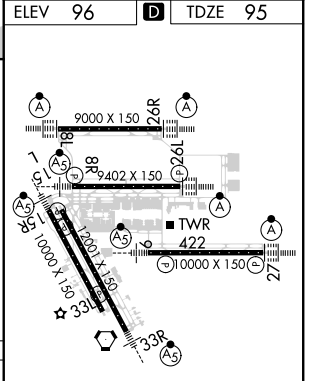
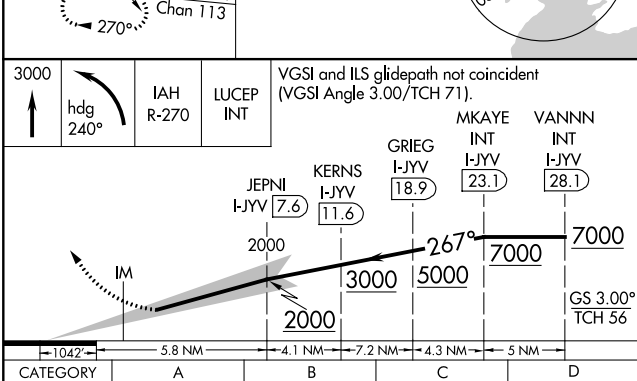
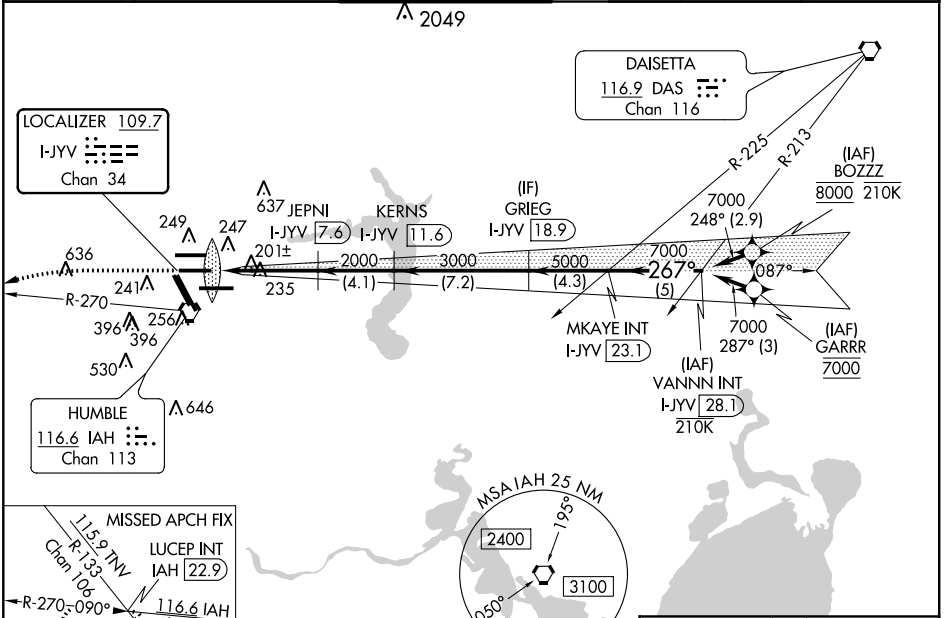
DME required. From BOZZZ, GARRR: RNAV 1-GPS required.

Simultaneous approach authorized with Rwy 26R and Rwy 27.  
Requires specific OPSPEC, MSPEC, or LOA approval and use of HUD to DH.

ALSF-2

MISSED APPROACH: Climb to 3000 then left turn heading 240° and IAH VORTAC R-270 to LUCEP INT/IAH 22.9 DME and hold.

D-ATIS <b>124.05</b>	HOUSTON APP CON <b>120.05 379.1</b> EAST <b>124.35 316.15</b> WEST	HOUSTON TOWER <b>125.35 290.2</b>	GND CON <b>118.575</b>	CLNC DEL <b>128.1</b>	CPDLC
-------------------------	--	--------------------------------------	---------------------------	--------------------------	-------



ELEV 96	TDZE 95				
3000	hdg 240°				
IAH R-270	LUCEP INT				
VGSi and ILS glidepath not coincident (VGSi Angle 3.00/TCH 71).					
JEPNI I-JYV 7.6	KERNS I-JYV 11.6	GRIEG I-JYV 18.9	MKAYE INT I-JYV 23.1	VANNN INT I-JYV 28.1	
2000	2000	3000	5000	7000	
1042	5.8 NM	4.1 NM	7.2 NM	4.3 NM	5 NM
CATEGORY A	B	C	D		
S-ILS 26L	RA 152/14 150 DA 245				

**SA CATEGORY I ILS - SPECIAL AIRCREW & AIRCRAFT CERTIFICATION REQUIRED**

TDZ/CL Rwws 8R, 8L, 15R, 26R, 26L, 27 and 33L  
HIRL all Rwws

SC-5, 07 OCT 2021 to 04 NOV 2021

SC-5, 07 OCT 2021 to 04 NOV 2021