

LOC/DME I-JYV 109.7 Chan 34	APP CRS 267°	Rwy Idg TDZE Apt Elev	9402 95 96
--	------------------------	-----------------------------	---------------------------------------

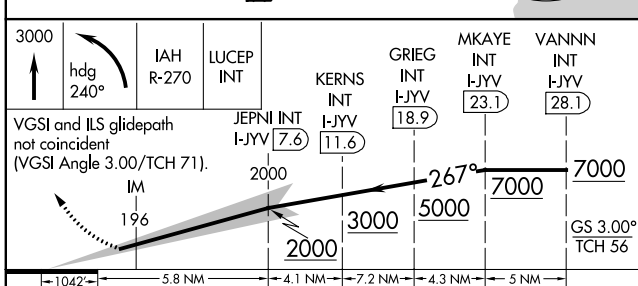
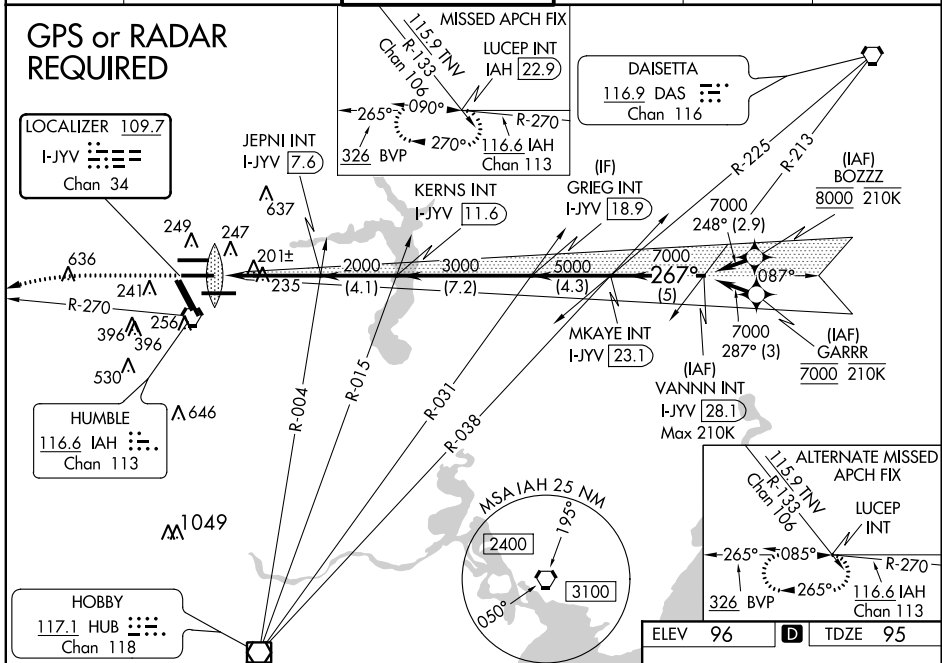
ILS RWY 26L (CAT II & III)
GEORGE BUSH INTERCONTINENTAL/HOUSTON (IAH)

<p>Simultaneous approach authorized with Rwy 26R and Rwy 27. Cat II: RVR 1000 authorized with specific OPSPEC, MSPEC, or LOA approval and use of autoland or HUD to touchdown.</p>	<p>ALSF-2 </p>	<p>MISSED APPROACH: Climb to 3000 then left turn heading 240° and IAH VORTAC R-270 to LUCEP INT/IAH 22.9 DME and hold.</p>
		<p>DAISETTA 116.9 DAS Chan 116</p>

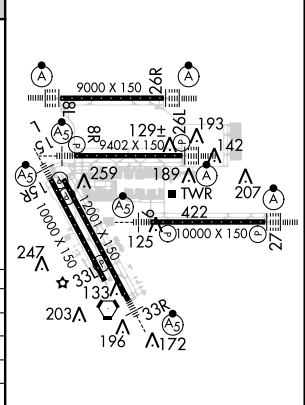
D-ATIS 124.05	HOUSTON APP CON 120.05 379.1 EAST 124.35 316.15 WEST	HOUSTON TOWER 125.35 290.2	GND CON 118.575	CLNC DEL 128.1	CPDLC
-------------------------	--	--------------------------------------	---------------------------	--------------------------	-------

GPS or RADAR REQUIRED

LOCALIZER 109.7
I-JYV
Chan 34



3000	hdg 240°	IAH R-270	LUCEP INT	JEPNI INT I-JYV 7.6	KERNS INT I-JYV 11.6	GRIEG INT I-JYV 18.9	MKAYE INT I-JYV 23.1	VANNIN INT I-JYV 28.1
<p>VGSI and ILS glidepath not coincident (VGSI Angle 3.00/TCH 71).</p> <p>IM 196</p> <p>2000 3000 5000 7000</p> <p>GS 3.00° TCH 56</p>								
<p>5.8 NM 4.1 NM 7.2 NM 4.3 NM 5 NM</p>								
CATEGORY	A	B	C	D				
S-ILS 26L	CAT II RA 100/12				100 DA 195			
S-ILS 26L	CAT IIIa RVR 07							
S-ILS 26L	CAT IIIb RVR 06							
S-ILS 26L	CAT IIIc NA							



CATEGORY II & III ILS - SPECIAL AIRCREW & AIRCRAFT CERTIFICATION REQUIRED

TDZ/CL Rwys 8R, 8L, 15R, 26R, 26L, 27 and 33L
HIRL all Rwws

SC-5, 28 MAR 2019 to 25 APR 2019

SC-5, 28 MAR 2019 to 25 APR 2019