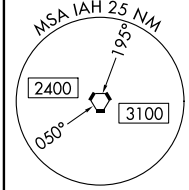
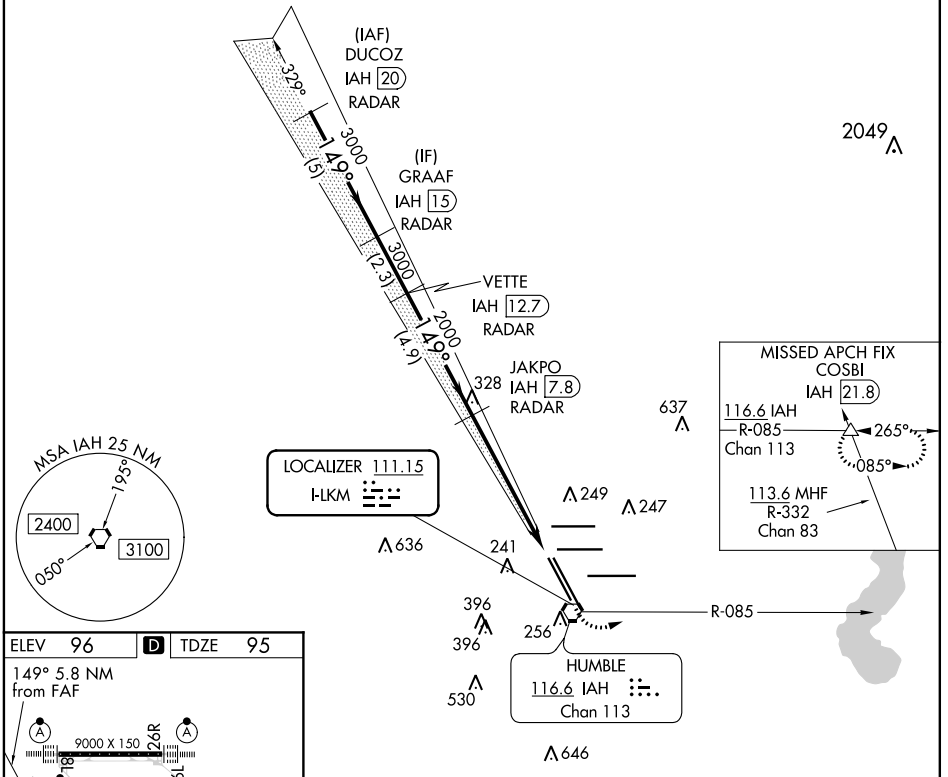


LOC I-LKM 111.15	APP CRS 149°	Rwy Idg 9999
		TDZE 95
		Apt Elev 96

ILS or LOC RWY 15R

GEORGE BUSH INTCNL/HOUSTON (IAH)

RADAR required for procedure entry. DME or RADAR required.		MALSR	MISSED APPROACH: Climb to 1000 then climbing left turn to 2000 on IAH VORTAC R-085 to COSBI INT/IAH 21.8 DME and hold.		
DME from IAH VORTAC. Simultaneous reception of I-LKM and IAH DME required. For inop ALS, increase S-ILS 15R Cat E visibility to RVR 4000, and S-LOC 15R Cat C/D/E visibility to 1 3/8 SM.					
D-ATIS 124.05	HOUSTON APP CON 120.05 379.1 EAST 124.35 316.15 WEST	HOUSTON TOWER 127.3 288.25	GND CON 121.7	CLNC DEL 128.1	CPDLC



ELEV 96	D	TDZE 95
149° 5.8 NM from FAF		
TDZ/CL Rwy 8R, 15R, 26R, 26L, 27 and 33L		
HIRL all Rwy		
FAF to MAP 5.8 NM		
Knots	60	90 120 150 180
Min:Sec	5:48	3:52 2:54 2:19 1:56

VGSi and ILS glidepath not coincident (VGSi Angle 3.00/TCH 71).				
DUCOZ IAH 20 RADAR	GRAAF IAH 15 RADAR	VETTE IAH 12.7 RADAR	JAKPO IAH 7.8 RADAR	COSBI
3000	3000	3000	2000	1000
GS 3.00° TCH 54				IAH R-085
*LOC only.				
CATEGORY	A	B	C	D E
S-ILS 15R	295/18 200 (200-1/2)			
S-LOC 15R	580/24	485 (500-1/2)	580/50	485 (500-1)

SC-5, 09 SEP 2021 to 07 OCT 2021

SC-5, 09 SEP 2021 to 07 OCT 2021