

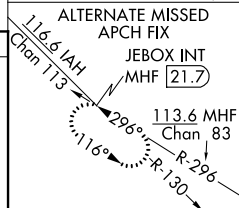
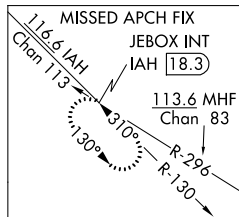
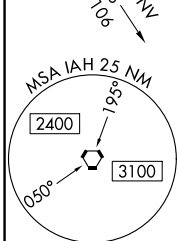
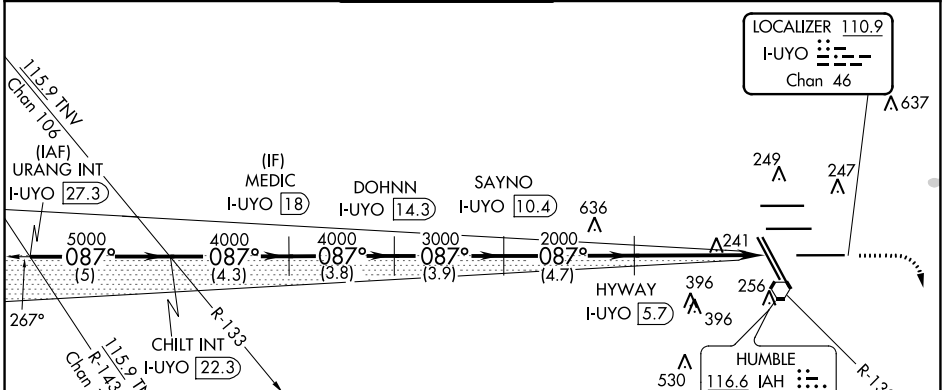
LOC/DME I-UYO <b>110.9</b> Chan <b>46</b>	APP CRS <b>087°</b>	Rwy Idg <b>10000</b> TDZE <b>90</b> Apt Elev <b>96</b>
---	------------------------	--

# ILS or LOC RWY 9

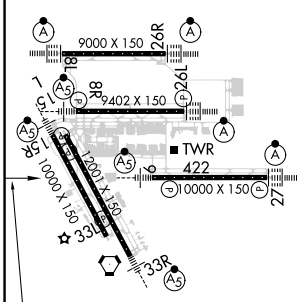
GEORGE BUSH INTERCONTINENTAL/HOUSTON (IAH)

DME required. RADAR required for procedure entry.	MALSR 	MISSED APPROACH: Climb to 580 then climbing right turn to 3000 on IAH VORTAC R-130 to JEBOX/IAH 18.3 DME and hold.
Simultaneous approach authorized with Rwy 8L/R. # RVR 1800 authorized with the use of FD or AP or HUD to DA.		

D-ATIS <b>124.05</b>	HOUSTON APP CON <b>120.05 379.1</b> EAST <b>124.35 316.15</b> WEST	HOUSTON TOWER <b>135.15 290.2</b>	GND CON <b>118.575</b>	CLNC DEL <b>128.1</b>	CPDLC
-------------------------	--	--------------------------------------	---------------------------	--------------------------	-------



ELEV 96	<b>D</b> TDZE 90
---------	------------------



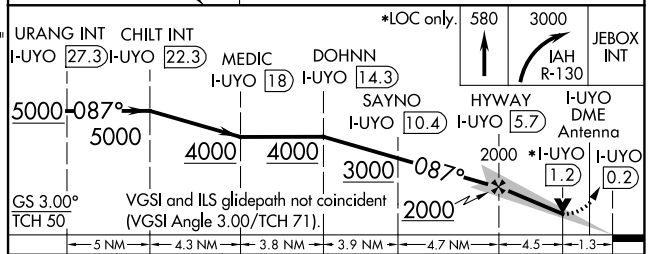
087° 5.8 NM from FAF

TDZ/CL Rwys 8R, 8L, 15R, 26R, 26L, 27 and 33L

HIRL all Rwys

FAF to MAP 5.8 NM

Knots	60	90	120	150	180
Min:Sec	5:48	3:52	2:54	2:19	1:56



CATEGORY	A	B	C	D	E
S-ILS 9 #	290/24 200 (200-1/2)				
S-LOC 9	580/24 490 (500-1/2)		580/50 490 (500-1)		

SC-5, 03 DEC 2020 to 31 DEC 2020

SC-5, 03 DEC 2020 to 31 DEC 2020