

HOUSTON, TEXAS

AL-5461 (FAA)

21112

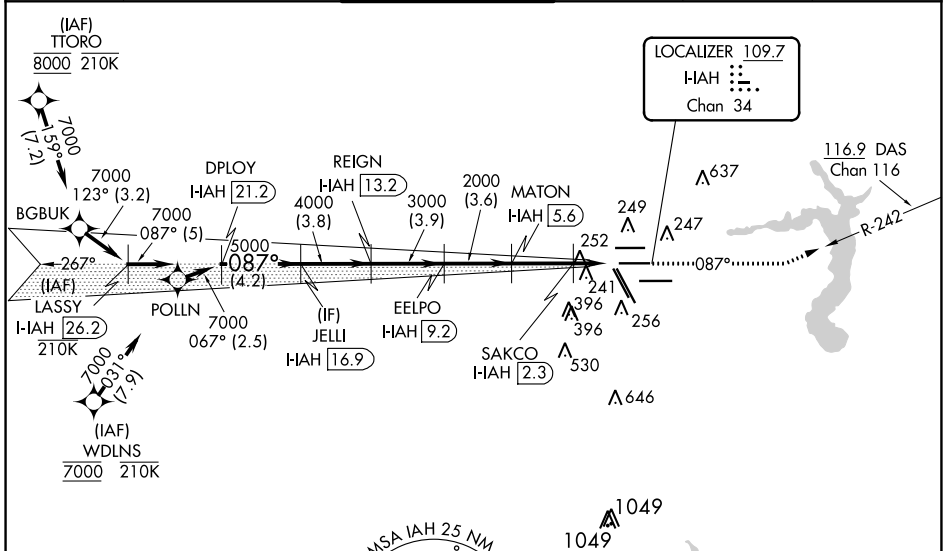
LOC/DME I-IAH 109.7 Chan 34	APP CRS 087°	Rwy Idg 9402 TDZE 95 Apt Elev 96
---	------------------------	---

ILS or LOC RWY 8R

GEORGE BUSH INTCNL/HOUSTON (IAH)

RNAV 1-GPS or RADAR required for procedure entry, DME.		MALSR 	MISSED APPROACH: Climb to 3000 on heading 087° and on DAS VORTAC R-242 to DAS VORTAC and hold.
<p>Simultaneous approach authorized. For inop ALS, increase S-LOC 8R Cat C/D/E visibility to 1 1/2 SM. For inop ALS, increase S-ILS 8R Cat E visibility to RVR 4000.</p>			

D-ATIS 124.05	HOUSTON APP CON 120.05 379.1 EAST 124.35 316.15 WEST	HOUSTON TOWER 125.35 290.2	GND CON 118.575	CLNC DEL 128.1	CPDLC
-------------------------	--	--------------------------------------	---------------------------	--------------------------	-------



SC-5, 09 SEP 2021 to 07 OCT 2021

SC-5, 09 SEP 2021 to 07 OCT 2021

ELEV 96	D	TDZE 95
087° 5.8 NM from FAF		

VGSI and ILS glidepath not coincident (VGSI Angle 3.00/TCH 72).		3000	DAS
		hdg 087°	R-242
*LOC only.			

LASSY I-IAH	DPLDY I-IAH	JELLI I-IAH	REIGN I-IAH	EELPO I-IAH	MATON I-IAH	SAKCO I-IAH	I-IAH DME ANTENNA																		
26.2	21.2	16.9	13.2	9.2	5.6	2.3	0.2																		
<table border="1"> <tr> <th>CATEGORY</th> <th>A</th> <th>B</th> <th>C</th> <th>D</th> <th>E</th> </tr> <tr> <td>S-ILS 8R</td> <td colspan="5">295/18 200 (200-1/2)</td> </tr> <tr> <td>S-LOC 8R</td> <td>560/24</td> <td>465 (500-1/2)</td> <td colspan="2">560/50</td> <td>465 (500-1)</td> </tr> </table>								CATEGORY	A	B	C	D	E	S-ILS 8R	295/18 200 (200-1/2)					S-LOC 8R	560/24	465 (500-1/2)	560/50		465 (500-1)
CATEGORY	A	B	C	D	E																				
S-ILS 8R	295/18 200 (200-1/2)																								
S-LOC 8R	560/24	465 (500-1/2)	560/50		465 (500-1)																				

<p>7000-087° → 087° → 7000 5000 4000 3000 2000 *940</p> <p>GS 3.00° TCH 55</p> <p>Distances: -5 NM, -4.2 NM, -3.8, -3.9, -3.6, -3.3 NM, -1.3 NM, 1.2 NM</p>																									
<table border="1"> <tr> <th>CATEGORY</th> <th>A</th> <th>B</th> <th>C</th> <th>D</th> <th>E</th> </tr> <tr> <td>S-ILS 8R</td> <td colspan="5">295/18 200 (200-1/2)</td> </tr> <tr> <td>S-LOC 8R</td> <td>560/24</td> <td>465 (500-1/2)</td> <td colspan="2">560/50</td> <td>465 (500-1)</td> </tr> </table>								CATEGORY	A	B	C	D	E	S-ILS 8R	295/18 200 (200-1/2)					S-LOC 8R	560/24	465 (500-1/2)	560/50		465 (500-1)
CATEGORY	A	B	C	D	E																				
S-ILS 8R	295/18 200 (200-1/2)																								
S-LOC 8R	560/24	465 (500-1/2)	560/50		465 (500-1)																				

HOUSTON, TEXAS
Amdt 26A 10OCT19

29°59'N-95°20'W

ILS or LOC RWY 8R