

LOC/DME I-BZU <b>111.55</b> Chan 52 (Y)	APP CRS <b>087°</b>	Rwy Idg TDZE Apt Elev	<b>9000</b> <b>95</b> <b>96</b>
---	------------------------	-----------------------------	---------------------------------------

# ILS or LOC RWY 8L

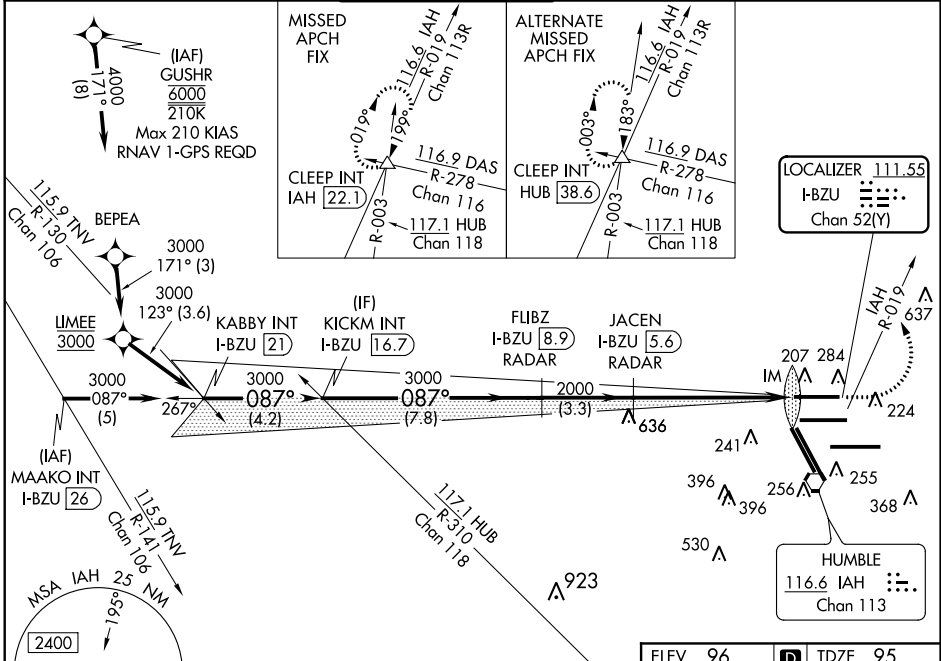
GEORGE BUSH INTERCONTINENTAL/HOUSTON (IAH)

Simultaneous approach authorized with Rwy 8R and Rwy 9.  
For inop ALS, increase S-ILS 8L Cat E visibility to RVR 4000 and S-LOC 8L Cat C, D, and E visibility to 1 1/2 SM.

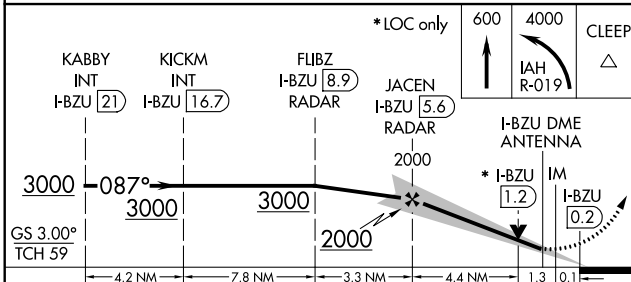


MISSED APPROACH: Climb to 600 then climbing left turn to 4000 on IAH VORTAC R-019 to CLEEP INT/IAH 22.1 DME and hold.

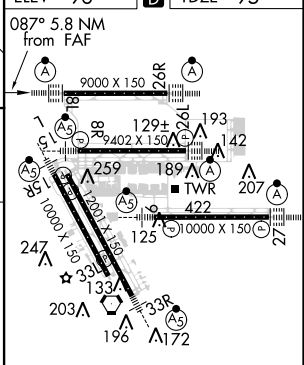
ATIS <b>124.05</b>	HOUSTON APP CON <b>120.05 379.1</b> EAST <b>124.35 316.15</b> WEST	HOUSTON TOWER <b>120.72 290.2</b>	GND CON <b>121.7</b>	CLNC DEL <b>128.1</b>	CPDLC
-----------------------	--	--------------------------------------	-------------------------	--------------------------	-------



**GPS or RADAR REQUIRED**



ELEV 96 TDZE 95



TDZ/Cl Rwsy 8R, 8L, 15R, 26R, 26L, 27 and 33L  
HIRL all Rwsy

FAF to MAP 5.8 NM

Knots	60	90	120	150	180
Min:Sec	5:48	3:52	2:54	2:19	1:56

CATEGORY	A	B	C	D	E
S-ILS 8L	295/18		200 (200-1/2)		
S-LOC 8L	600/24	505 (600-1/2)		600/55	505 (600-1)

SC-5, 28 MAR 2019 to 25 APR 2019

SC-5, 28 MAR 2019 to 25 APR 2019