

LAAS CH <b>22306</b>	APP CRS <b>267°</b>	Rwy Idg <b>10000</b> TDZE <b>87</b> Apt Elev <b>96</b>
-------------------------	------------------------	--

# GLS RWY 27

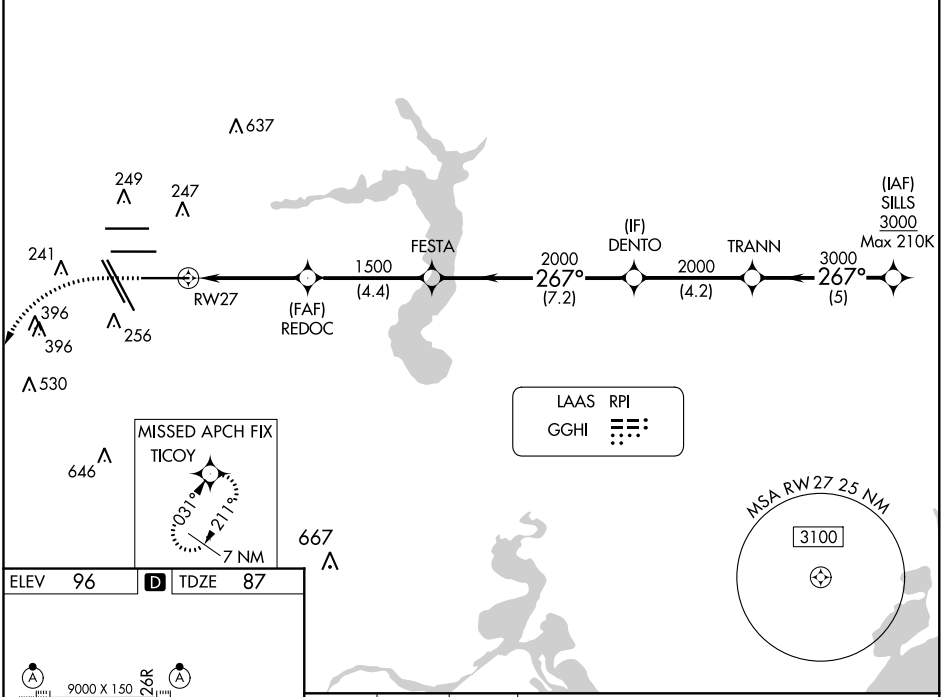
GEORGE BUSH INTERCONTINENTAL/HOUSTON (IAH)

**NA** For inop ALSF, increase GLS all Cats visibility to RVR 4000. Simultaneous approach authorized with Rwy 26L and Rwy 26R. DME/DME RNP-0.3 NA. GPS required. Use of FD or AP providing RNAV track guidance required during simultaneous operations. Autoland approach NA.

**ALSF-2** MISSED APPROACH: Climb to 560 then climbing left turn to 3100 direct TICOY and hold.

D-ATIS <b>124.05</b>	HOUSTON APP CON <b>120.05 379.1 EAST</b> <b>124.35 316.15 WEST</b>	HOUSTON TOWER <b>135.15 290.2</b>	GND CON <b>118.575</b>	CLNC DEL <b>128.1</b>	CPDLC
-------------------------	--	--------------------------------------	---------------------------	--------------------------	-------

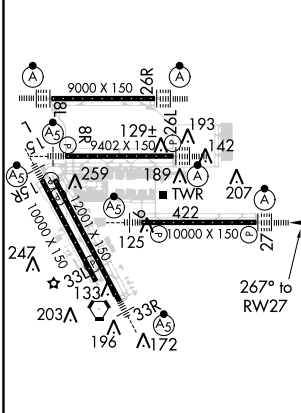
## RADAR REQUIRED



SC-5, 01 MAR 2018 to 29 MAR 2018

SC-5, 01 MAR 2018 to 29 MAR 2018

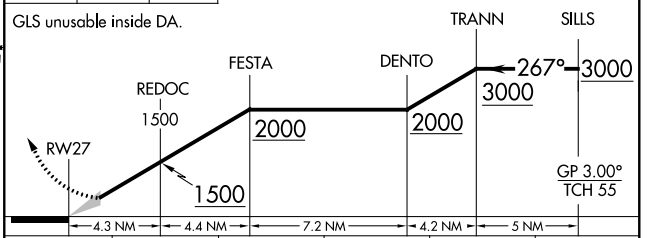
ELEV 96	<b>D</b>	TDZE 87
---------	----------	---------



TDZ/CL Rwy 8R, 8L, 15R, 26R, 26L, 27 and 33L  
HIRL all Rwy

560 3100 TICOY  

 VGSI and GLS glidepath not coincident (VGSI Angle 3.00/TCH 70).



CATEGORY	A	B	C	D	E
GLS DA	287/18 200 (200-1/2)				