

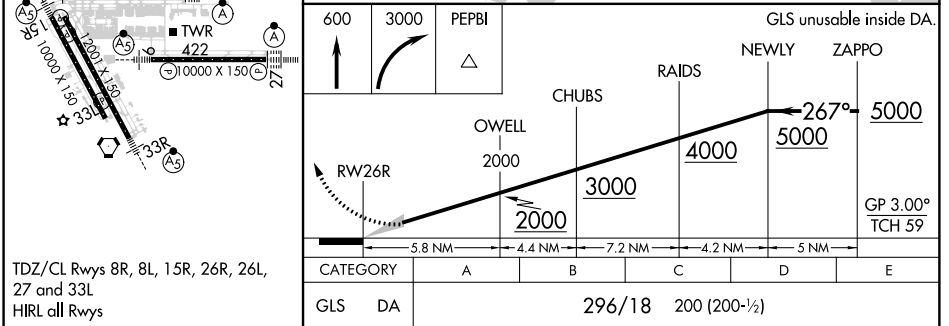
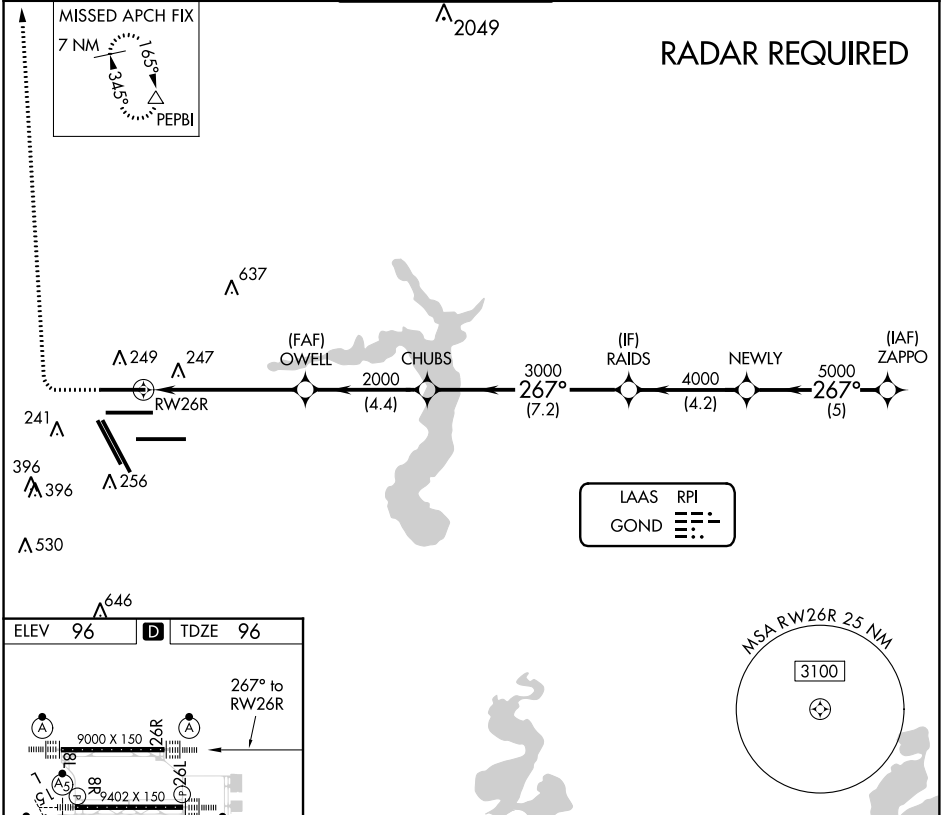
LAAS CH 21484	APP CRS 267°	Rwy Idg TDZE 96	9000
RPI GOND		Apt Elev 96	

GLS RWY 26R

GEORGE BUSH INTERCONTINENTAL/HOUSTON (IAH)

<p>NA</p> <p>For inop ALSF, increase GLS all Cats visibility to RVR 4000. DME/DME RNP-0.3 NA. GPS required. Simultaneous approach authorized with Rwy 26L and Rwy 27. Use of FD or AP providing RNAV track guidance required during simultaneous operations. Autoland approach NA.</p>	<p>ALSF-2</p>	<p>MISSED APPROACH: Climb to 600 then climbing right turn to 3000 direct PEPBI and hold.</p>
	<p>NA</p>	

D-ATIS 124.05	HOUSTON APP CON 120.05 379.1 EAST 124.35 316.15 WEST	HOUSTON TOWER 120.72 290.2	GND CON 121.7	CLNC DEL 128.1	CPDLC
-------------------------	--------------------------------------------------------------------------	--------------------------------------	-------------------------	--------------------------	-------



TDZ/CL Rws 8R, 8L, 15R, 26R, 26L, 27 and 33L
HIRL all Rws

HOUSTON, TEXAS
Amdt 1B 07DEC17

GEORGE BUSH INTERCONTINENTAL/HOUSTON (IAH)
29°59'N-95°20'W

GLS RWY 26R

SC-5, 18 JUN 2020 to 16 JUL 2020

SC-5, 18 JUN 2020 to 16 JUL 2020