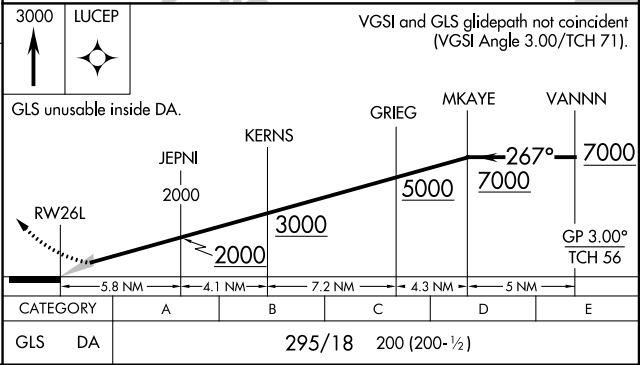
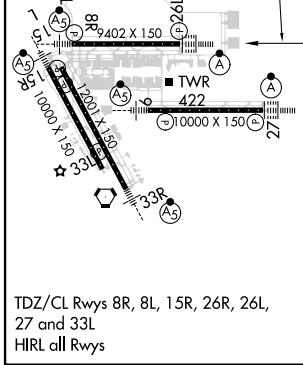
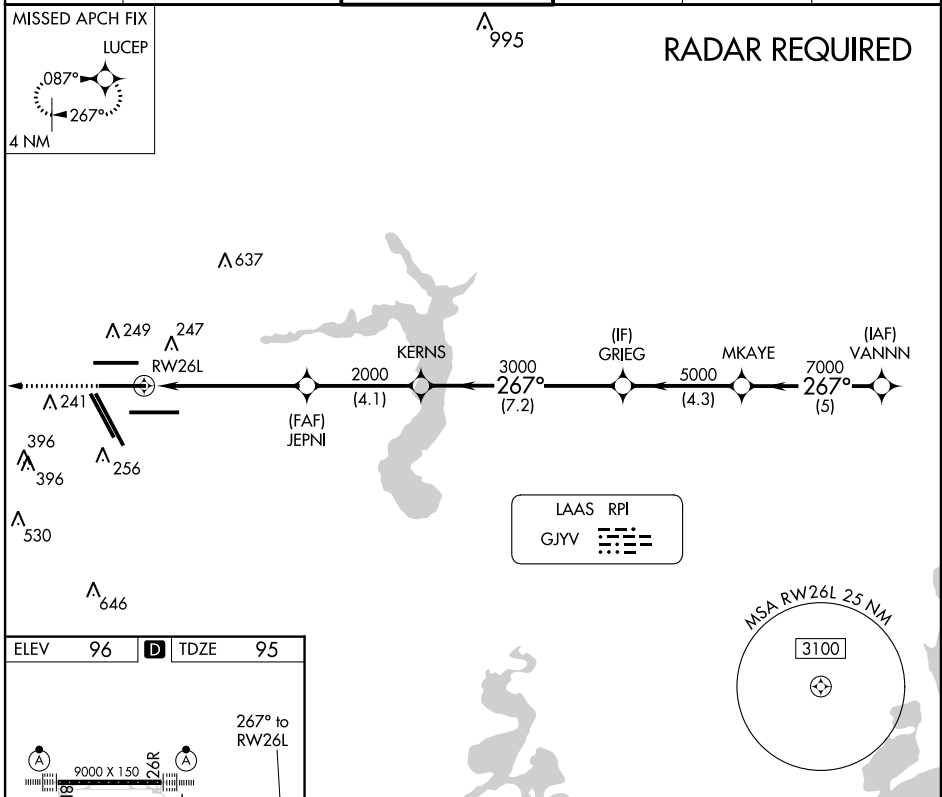


LAAS CH 20662 RPI GJVV	APP CRS 267°	Rwy Idg 9402 TDZE 95 Apt Elev 96
--	------------------------	---

GLS RWY 26L

GEORGE BUSH INTERCONTINENTAL/HOUSTON (IAH)

NA For inop ALSF, increase GLS all Cats visibility to RVR 4000. Simultaneous approach authorized with Rwy 26R and Rwy 27. DME/DME RNP-0.3 NA. GPS required. Use of FD or AP providing RNAV track guidance required during simultaneous operations. Autoland approach NA.	ALSF-2 	MISSED APPROACH: Climb to 3000 direct LUCEP and hold.			
D-ATIS 124.05	HOUSTON APP CON 120.05 379.1 EAST 124.35 316.15 WEST	HOUSTON TOWER 125.35 290.2	GND CON 118.575	CLNC DEL 128.1	CPDLC



SC-5, 16 JUL 2020 to 13 AUG 2020

SC-5, 16 JUL 2020 to 13 AUG 2020