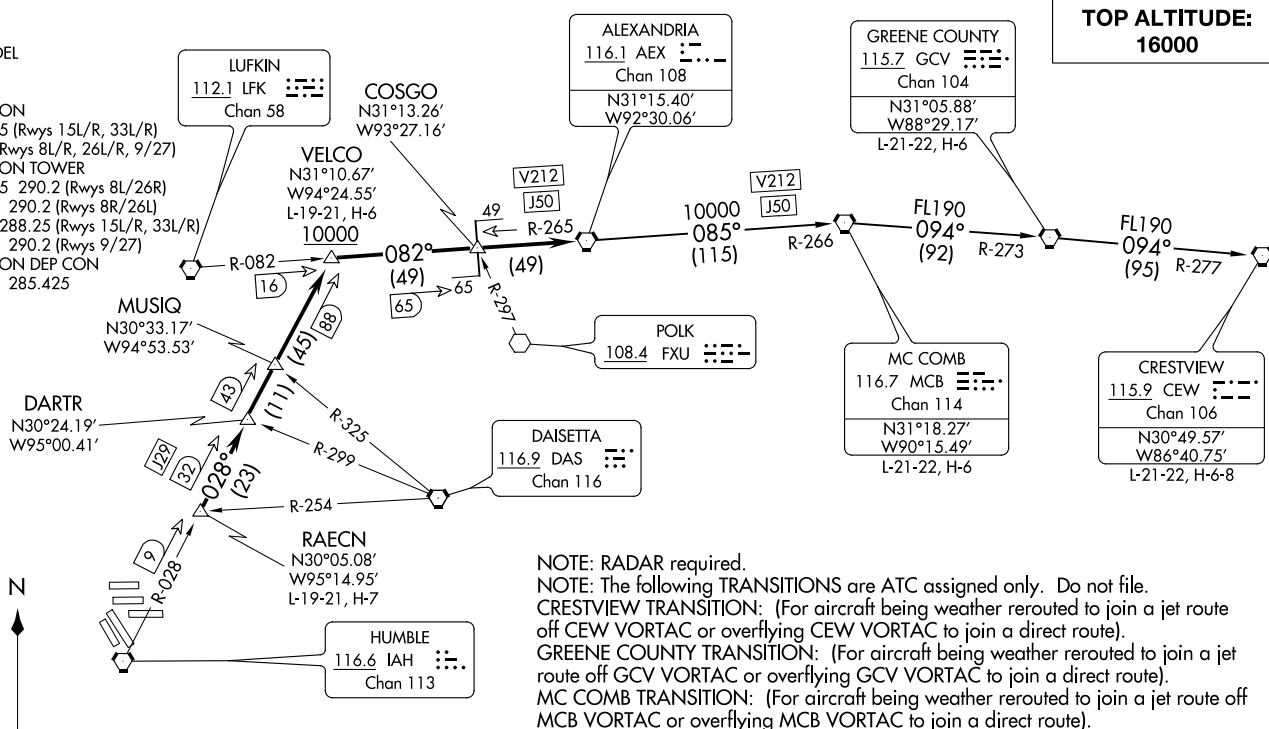


ALEXANDRIA ONE DEPARTURE  
 (AEX1 .AEX) 22JUN17  
 GEORGE BUSH INTERCONTINENTAL/HOUSTON (IAH)  
 HOUSTON, TEXAS

D-ATIS  
 124.05  
 CLNC DEL  
 128.1  
 CPDLC  
 GND CON  
 118.575 (Rwys 15L/R, 33L/R)  
 121.7 (Rwys 8L/R, 26L/R, 9/27)  
 HOUSTON TOWER  
 120.725 290.2 (Rwys 8L/26R)  
 125.35 290.2 (Rwys 8R/26L)  
 127.3 288.25 (Rwys 15L/R, 33L/R)  
 135.15 290.2 (Rwys 9/27)  
 HOUSTON DEP CON  
 132.25 285.425



**TOP ALTITUDE:  
16000**

**TAKEOFF MINIMUMS**  
 Rwys 8L/R, 9, 27, 15L/R, 26L/R, 33L/R: Standard.

NOTE: RADAR required.  
 NOTE: The following TRANSITIONS are ATC assigned only. Do not file.  
 CRESTVIEW TRANSITION: (For aircraft being weather rerouted to join a jet route off CEW VORTAC or overflying CEW VORTAC to join a direct route).  
 GREENE COUNTY TRANSITION: (For aircraft being weather rerouted to join a jet route off GCV VORTAC or overflying GCV VORTAC to join a direct route).  
 MC COMB TRANSITION: (For aircraft being weather rerouted to join a jet route off MCB VORTAC or overflying MCB VORTAC to join a direct route).

NOTE: Chart not to scale.

(NARRATIVE ON FOLLOWING PAGE)

(AEX1 .AEX) 18032  
 ALEXANDRIA ONE DEPARTURE  
 GEORGE BUSH INTERCONTINENTAL/HOUSTON (IAH)  
 AL-5461 (FAA)  
 HOUSTON, TEXAS

# ALEXANDRIA ONE DEPARTURE



## DEPARTURE ROUTE DESCRIPTION

TAKEOFF ALL RWYS: Climb on assigned heading for RADAR vectors to RAECN INT, maintain 16000. Expect filed altitude 10 minutes after departure, thence. . . .

. . . .on IAH R-028 to VELCO INT, cross VELCO INT at or above 10000, then right turn on LFK R-082 and AEX R-265 to AEX VORTAC.

CRESTVIEW TRANSITION (AEX1.CEW): over AEX VORTAC on AEX R-085 and MCB R-266 to MCB VORTAC, then on MCB R-094 and GCV R-273 to GCV VORTAC, then on GCV R-094 and CEW R-277 to CEW VORTAC.

GREENE COUNTY TRANSITION (AEX1.GCV): From over AEX VORTAC on AEX R-085 and MCB R-266 to MCB VORTAC, then on MCB R-094 and GCV R-273 to GCV VORTAC.

MC COMB TRANSITION (AEX1.MCB): From over AEX VORTAC on AEX R-085 and MCB R-266 to MCB VORTAC.

SC-5, 12 SEP 2019 to 10 OCT 2019

SC-5, 12 SEP 2019 to 10 OCT 2019