


TACAN IAG Chan 47	APP CRS 286°	Rwy Idg TDZE Apt Elev	9129 588 592
-----------------------------	------------------------	-----------------------------	---

TACAN RWY 28R

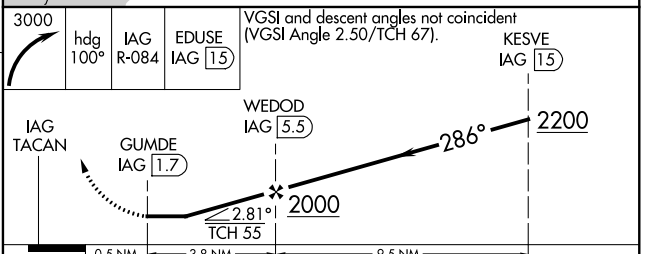
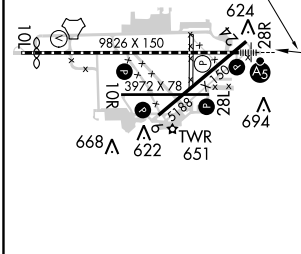
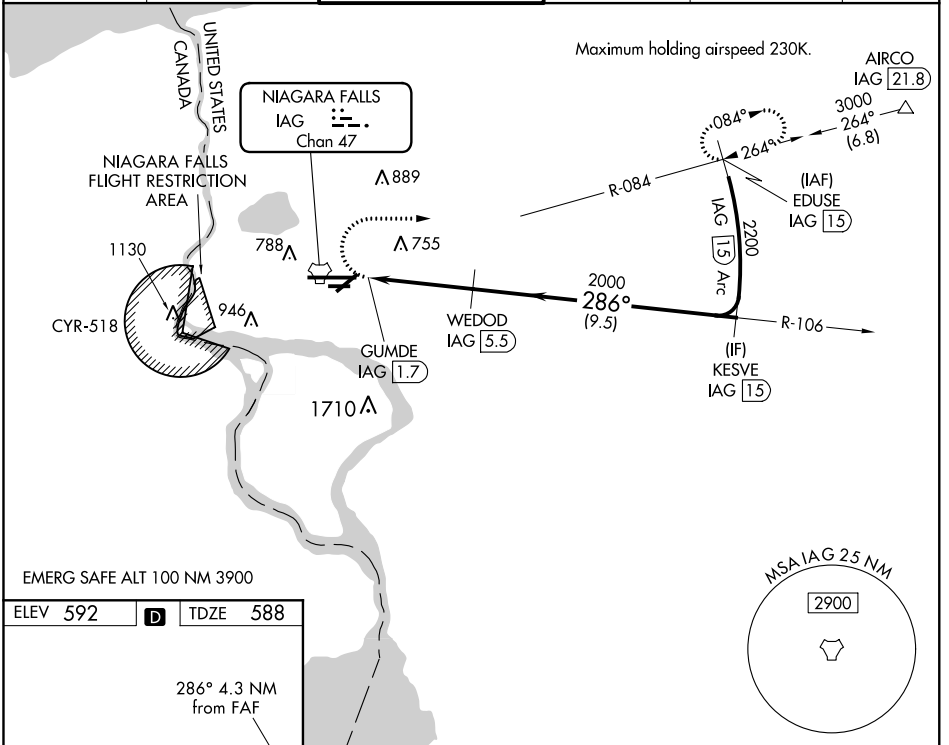
NIAGARA FALLS INTL (IAG)

⚠ When local altimeter setting not received, use Buffalo Niagara Intl altimeter setting and increase all MDA 60 feet; increase S-28R visibility for Cat C/D/E to RVR 4500 and Circling Cat D/E visibility ¼ mile. Circling NA for Cat E south of Rwy 10L-28R. For inop MALSR, increase S-28R Cat A/B visibility to RVR 5000 and Cat C/D/E to RVR 6000. Rwy 28R helicopter visibility reduction below ¾ SM NA. Rwy 6, 10R, 24, 28L helicopter visibility reduction 1 SM NA. Circling Rwy 6, 10R, 24, 28L NA at night.

MALSR 

MISSED APPROACH: Climbing right turn to 3000 on heading 100° and IAG R-084 to EDUSE/IAG 15 DME and hold.

ATIS 120.8 269.4	BUFFALO APP CON 126.5 317.6	NIAGARA TOWER★ 118.5 (CTAF) 349.0	GND CON 121.7 275.8	CLNC DEL 119.25 251.1	UNICOM 122.95
----------------------------	---------------------------------------	---	-------------------------------	---------------------------------	-------------------------



ELEV 592	D	TDZE 588			
TDZ/CL Rwy 28R REIL Rwys 6,10R, 24, and 28L ⬇ HIRL Rwy 10L-28R ⬇ MIRL Rwys 6-24 and 10R-28L ⬇					
CATEGORY	A	B	C	D	E
S-28R	1000/40 412 (500-¾)				
CIRCLING	1100-1 508 (600-1)	1100-1½ 508 (600-1½)	1360-2½ 768 (800-2½)	1360-2¾ 768 (800-2¾)	

NE-2. 01 MAR 2018 to 29 MAR 2018

NE-2. 01 MAR 2018 to 29 MAR 2018