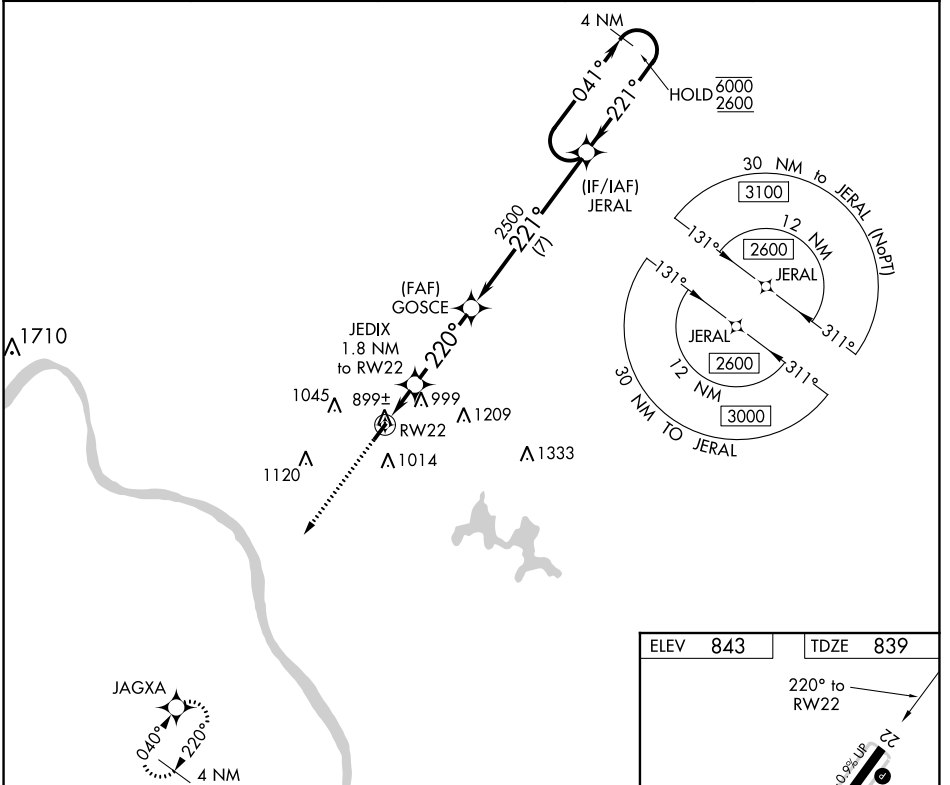


WAAS CH <b>82227</b> <b>W22A</b>	APP CRS <b>220°</b>	Rwy Idg TDZE Apt Elev	<b>3566</b> <b>839</b> <b>843</b>
--	------------------------	-----------------------------	---

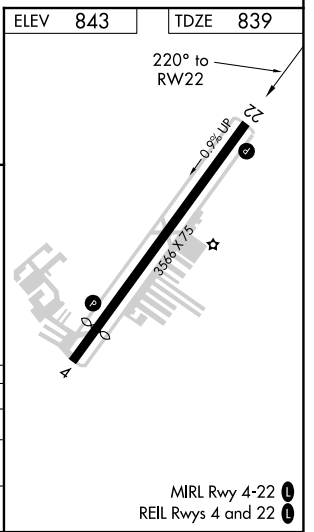
# RNAV (GPS) RWY 22

CLERMONT COUNTY (I69)

RNP APCH.		MISSED APPROACH: Climb to 2500 direct JAGXA and hold.	
<p><b>▼</b> Circling Rwy 4 NA at night. <b>▲</b> Rwy 22 helicopter visibility reduction below 1 SM NA.</p>		AWOS-3 <b>127.275</b>	CINCINNATI APP CON <b>121.0 254.25</b>
		CLNC DEL <b>124.9</b>	UNICOM <b>122.975 (CTAF) 0</b>



2500	JAGXA	Visual Segment- Obstacles.		JERAL	4 NM Holding Pattern
↑	✧	GOSCE		041° → 6000	← 221° 2600
	JEDIX 1.8 NM to RW22				
	RW22	1420	2500		
	1.8	3.4 NM	7 NM		
CATEGORY	A	B	C	D	
LP MDA	1160-1 321 (400-1)			NA	
LNAV MDA	1240-1	401 (400-1)	1240-1½ 401 (400-1½)	NA	
<b>C</b> CIRCLING	1320-1 477 (500-1)	1360-1 517 (600-1)	1520-2 677 (700-2)	NA	



EC-2, 15 JUL 2021 to 12 AUG 2021

EC-2, 15 JUL 2021 to 12 AUG 2021



BATAVIA, OHIO

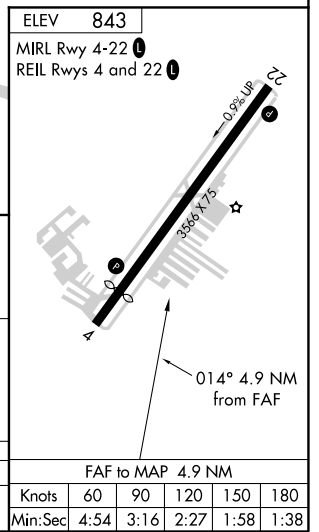
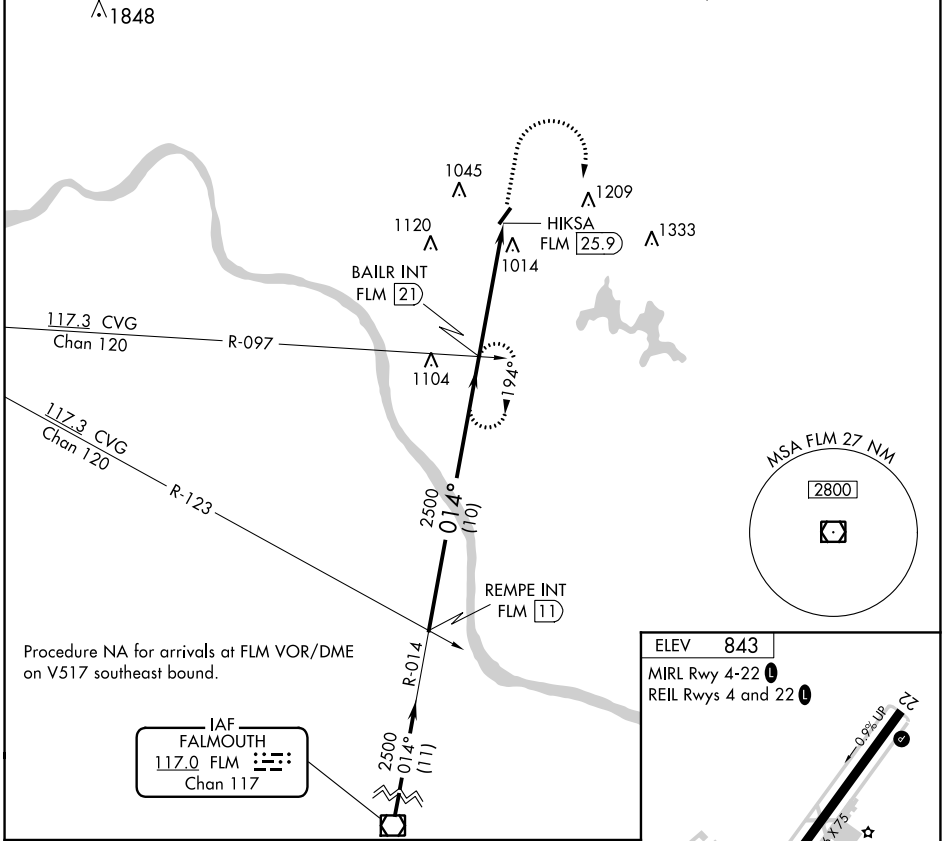
AL-5955 (FAA)

21112

VOR/DME FLM <b>117.0</b> Chan <b>117</b>	APP CRS <b>014°</b>	Rwy Idg TDZE Apt Elev	<b>N/A</b> <b>N/A</b> <b>843</b>
--	------------------------	-----------------------------	--

VOR-B  
CLERMONT COUNTY (I69)

<p>Rwy 4/22 helicopter visibility reduction below 1 SM NA. Procedure NA at night. When local altimeter setting not received, use Cincinnati Muni/Lunken Fld altimeter setting and increase all MDAs 80 feet and visibility Cat C ¼ SM.</p>		<p>MISSED APPROACH: Climb to 2500 then right turn via FLM VOR/DME R-014 to BAILR INT/21 DME and hold.</p>	
AWOS-3 <b>127.275</b>	CINCINNATI APP CON <b>121.0 254.25</b>	CLNC DEL <b>124.9</b>	UNICOM <b>122.975 (CTAF) 0</b>



REMP INT FLM 11	BAILR INT FLM 21	2500	BAILR INT							
2500 — 014° — 2500		<p>FLM R-014</p>	<p>BAILR INT</p>							
<p>10 NM</p> <p>4.9 NM</p>										
CATEGORY	A	B	C	D	FAF to MAP 4.9 NM					
CIRCLING	1420-1 577 (600-1)	1420-1¼ 577 (600-1¼)	1520-2 677 (700-2)	NA	Knots	60	90	120	150	180
					Min:Sec	4:54	3:16	2:27	1:58	1:38

BATAVIA, OHIO  
Amdt 7C 22JUN17

39°05'N-84°13'W

CLERMONT COUNTY (I69)  
VOR-B

EC-2, 15 JUL 2021 to 12 AUG 2021

EC-2, 15 JUL 2021 to 12 AUG 2021