

LOC I-HTS <b>109.9</b>	APP CRS <b>118°</b>	Rwy Idg <b>6516</b>
		TDZE <b>828</b>
		Apt Elev <b>828</b>

# ILS or LOC RWY 12

TRI-STATE/MILTON J FERGUSON FLD (HTS)

RNAV-1 GPS required.  
RADAR required.

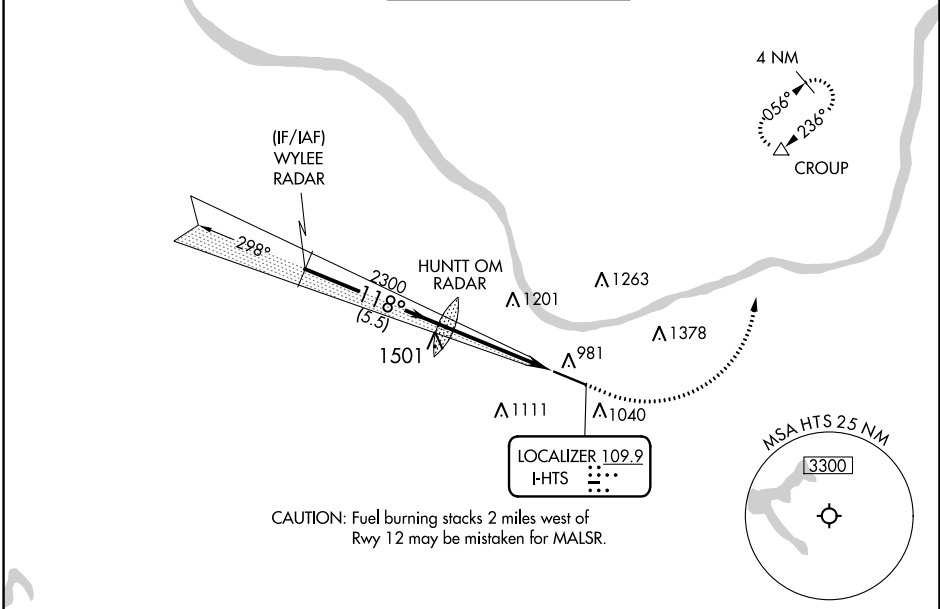
**ASR** \*\* RVR 1800 authorized with use of FD or AP or HUD to DA.

MALSR



MISSED APPROACH: Climb to 1700 then climbing left turn to 3000 direct CROUP and hold.

ATIS <b>125.2</b>	HUNTINGTON APP CON <b>119.75 270.1</b>	HUNTINGTON TOWER <b>118.5 270.1</b>	GND CON <b>121.9</b>	CLNC DEL <b>118.05</b>
----------------------	---	--	-------------------------	---------------------------

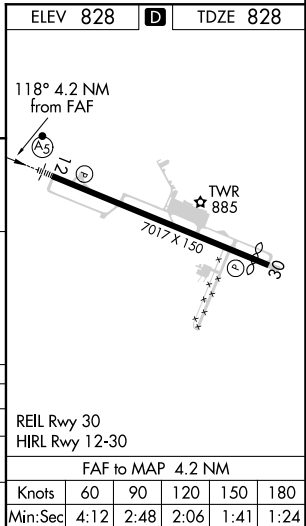
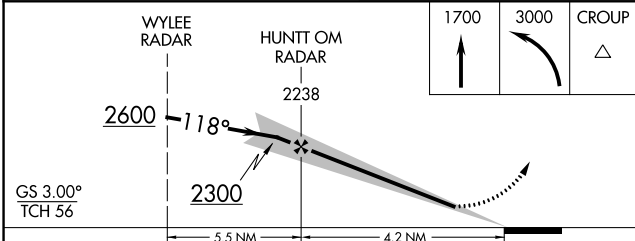


CAUTION: Fuel burning stacks 2 miles west of Rwy 12 may be mistaken for MALSR.

NE-4, 19 MAY 2022 to 16 JUN 2022

NE-4, 19 MAY 2022 to 16 JUN 2022

ELEV 828	<b>D</b>	TDZE 828
----------	----------	----------



CATEGORY	A	B	C	D
S-ILS 12**	1028/24		200 (200-½)	
S-LOC 12	1380/24	552 (600-½)	1380/60	552 (600-1¼)
<b>C</b> CIRCLING	1380-1	552 (600-1)	1520-2 692 (700-2)	1820-3 992 (1000-2)

# ILS or LOC RWY 12