

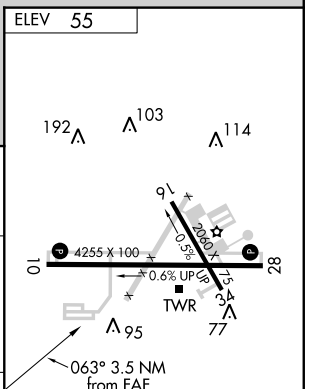
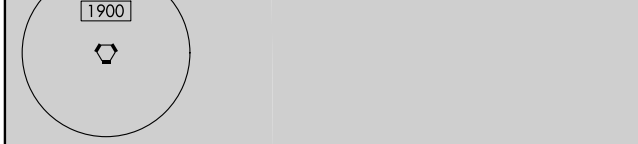
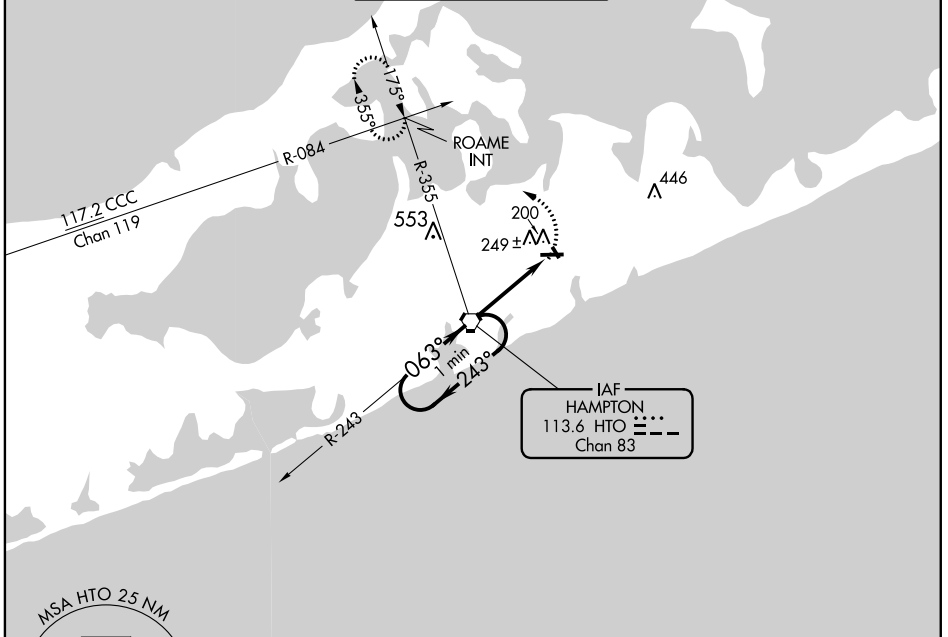
VORTAC HTO 113.6 Chan 83	APP CRS 063°	Rwy Idg TDZE N/A Apt Elev 55
--	------------------------	--

VOR-A
EAST HAMPTON (HTO)

⚠ When local altimeter setting not received, use Westhampton Beach altimeter setting. Helicopter visibility reduction below 1 SM NA. Night landing: Rwy 10, 28 operational VGSI required, remain on or above VGSI glidepath until threshold.

MISSED APPROACH: Climbing left turn to 2000 via heading 280° and HTO VORTAC R-355 to ROAME INT and hold.

AWOS-3PT 118.075	NEW YORK APP CON 125.975 343.65	EAST HAMPTON TOWER ★ 125.225 (CTAF) 0	GND CON 121.9	CLNC DEL 118.95
----------------------------	---	---	-------------------------	---------------------------



One Minute Holding Pattern	HTO VORTAC	2000 hdg 280°	HTO R-355	ROAME INT
----------------------------	------------	------------------	-----------	-----------

CATEGORY	A	B	C	D	
C CIRCLING	600-1	545 (600-1)	640-1½ 585 (600-1½)	800-2½ 745 (800-2½)	
WESTHAMPTON BEACH ALTIMETER SETTING MINIMUMS					
C CIRCLING	640-1	585 (600-1)	700-1¾ 645 (700-1¾)	840-2¼ 785 (800-2¼)	
FAF to MAP 3.5 NM					
Knots	60	90	120	150	180
Min:Sec	3:30	2:20	1:45	1:24	1:10

NE-2, 29 MAR 2018 to 26 APR 2018

NE-2, 29 MAR 2018 to 26 APR 2018