

APP CRS 176°	Rwy Idg 6000
	TDZE 46
	Apt Elev 46

RNAV (GPS) RWY 17

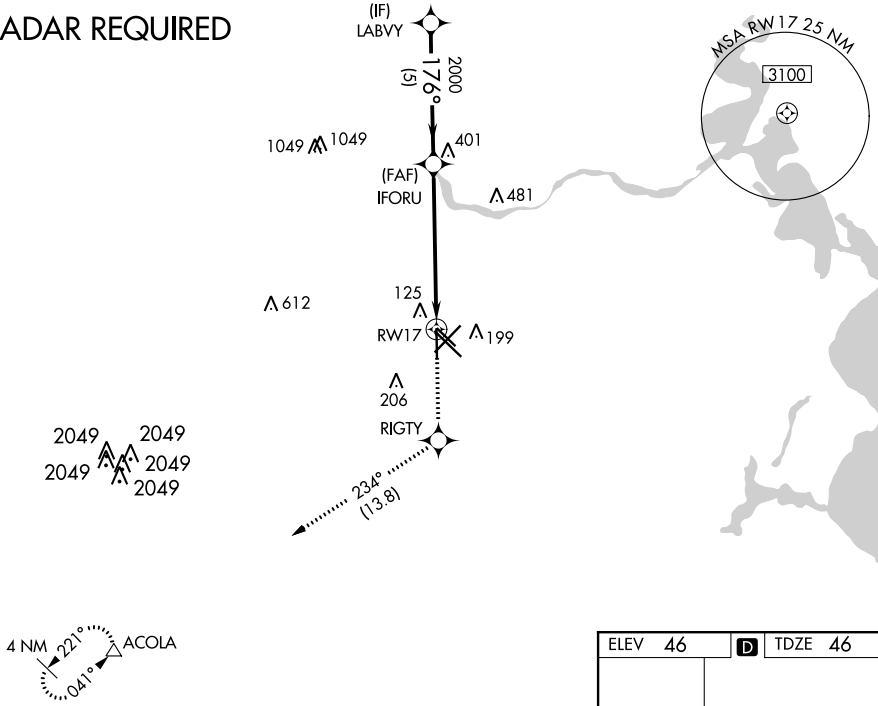
WILLIAM P HOBBY (HOU)

⚠ For uncompensated Baro-VNAV systems, LNAV/VNAV NA below -1.5°C (5°F) or above 43°C (109°F). DME/DME RNP-0.3 NA. Helicopter visibility reduction below ¾ SM NA.

MISSED APPROACH: Climb to 3000 direct RIGTY and on track 234° to ACOLA and hold.

D-ATIS 124.6	HOUSTON APP CON 120.05 379.1 EAST 124.35 316.15 WEST	HOBBY TOWER 118.7 256.9	GND CON 121.9	CLNC DEL 125.45	CPDLC
------------------------	--	-----------------------------------	-------------------------	---------------------------	-------

RADAR REQUIRED



SC-5, 05 DEC 2019 to 02 JAN 2020

SC-5, 05 DEC 2019 to 02 JAN 2020

	LABVY	IFORU	3000	RIGTY	tr 234°	ACOLA
	2000	2000				
	GP 3.00° TCH 40		*1.6 NM to RWY 17		*LNAV only.	
	5 NM		4.3 NM	1.6 NM		
CATEGORY	A	B	C	D		
LNAV/VNAV DA	480-1½		434 (500-1½)			
LNAV MDA	580-1	534 (600-1)	580-1½	534 (600-1½)	580-1¾	534 (600-1¾)
CIRCLING	580-1	534 (600-1)	580-1½	534 (600-1½)	600-2	554 (600-2)

