

**TOP ALTITUDE:
16000**

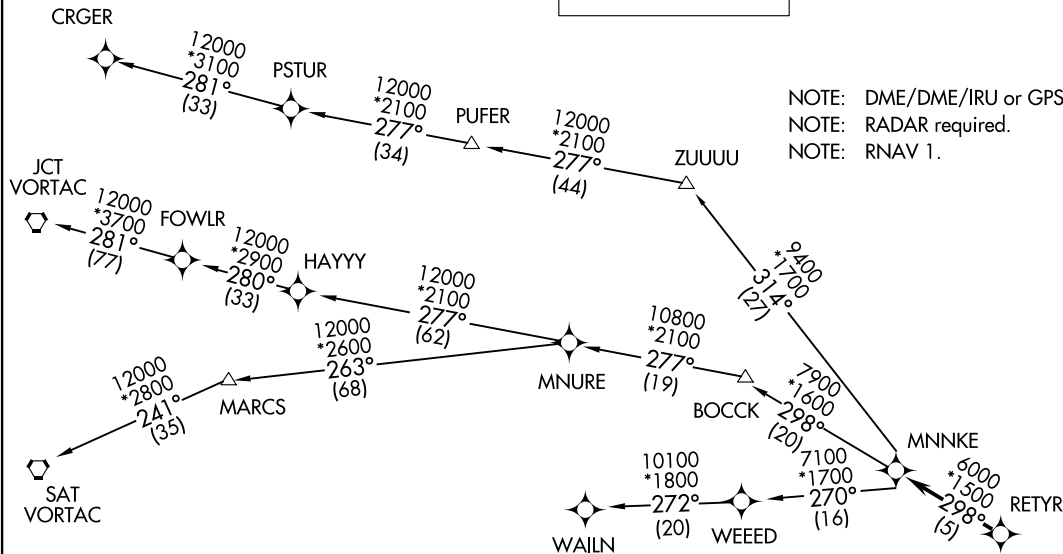
D-ATIS 124.6
CLNC DEL 125.45
CPDLC
GND CON 121.9
HOBBY TOWER 118.7 256.9
HOUSTON DEP CON 126.675 339.8

NOTE: DME/DME/IRU or GPS required.
NOTE: RADAR required.
NOTE: RNAV 1.

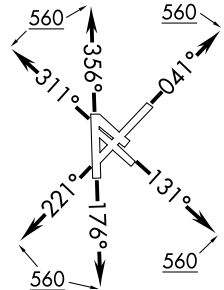
RETYR FIVE DEPARTURE (RNAV)
(RETYR5, RETYR) 10 NOV 16

(RETYR5, RETYR) 18032
RETYR FIVE DEPARTURE (RNAV)

AL-198 (FAA)



TAKEOFF MINIMUMS
Rwys 4, 13L/R, 17, 31L/R, 35:
Standard with minimum climb of 500' per NM to 560.
Rwy 22: Standard with minimum climb of 500' per NM to 800.



NOTE: Chart not to scale.

(NARRATIVE ON FOLLOWING PAGE)

HOUSTON, TEXAS
WILLIAM P HOBBY (HOUT)

WILLIAM P HOBBY (HOUT)
HOUSTON, TEXAS

RETYR FIVE DEPARTURE (RNAV)



DEPARTURE ROUTE DESCRIPTION

TAKEOFF RWY 4: Climb heading 041° to 560, expect RADAR vectors to RETYR, thence

TAKEOFF RWYS 13L/R: Climb heading 131° to 560, expect RADAR vectors to RETYR, thence

TAKEOFF RWY 17: Climb heading 176° to 560, expect RADAR vectors to RETYR, thence

TAKEOFF RWY 22: Climb heading 221° to 560, expect RADAR vectors to RETYR, thence

TAKEOFF RWYS 31L/R: Climb heading 311° to 560, expect RADAR vectors to RETYR, thence

TAKEOFF RWY 35: Climb heading 356° to 560, expect RADAR vectors to RETYR, thence

. . . . on track 298° to MNNKE, then on (transition). Maintain 16000, expect filed altitude 10 minutes after departure.

CRGER TRANSITION (RETYR5.CRGER): (ATC assigned only)

JUNCTION TRANSITION (RETYR5.JCT)

MNURE TRANSITION (RETYR5.MNURE)

SAN ANTONIO TRANSITION (RETYR5.SAT)

WAILN TRANSITION (RETYR5.WAILN)

SC-5, 05 DEC 2019 to 02 JAN 2020

SC-5, 05 DEC 2019 to 02 JAN 2020