

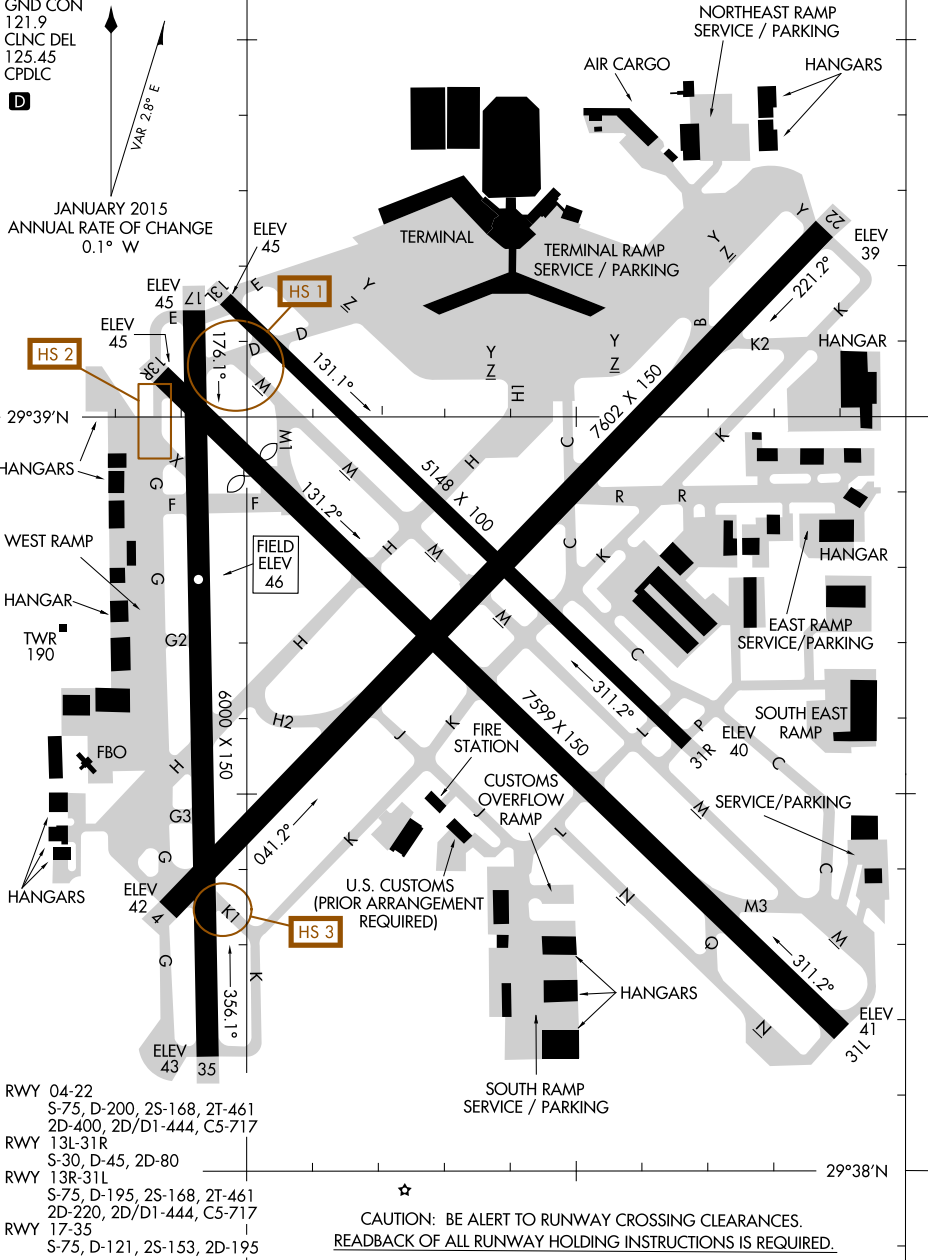
AIRPORT DIAGRAM

AL-198 (FAA)

WILLIAM P HOBBY (HOU)
HOUSTON, TEXAS

D-ATIS
124.6
HOBBY TOWER
118.7 256.9
GND CON
121.9
CLNC DEL
125.45
CPDLC

ASDE-X in use. Operate transponders
with altitude reporting mode and ADS-B
(if equipped) enabled on all airport surfaces.



SC-5, 01 MAR 2018 to 29 MAR 2018

SC-5, 01 MAR 2018 to 29 MAR 2018

RWY 04-22
S-75, D-200, 2S-168, 2T-461
2D-400, 2D/D1-444, C5-717

RWY 13L-31R
S-30, D-45, 2D-80

RWY 13R-31L
S-75, D-195, 2S-168, 2T-461
2D-220, 2D/D1-444, C5-717

RWY 17-35
S-75, D-121, 2S-153, 2D-195

★
CAUTION: BE ALERT TO RUNWAY CROSSING CLEARANCES.
READBACK OF ALL RUNWAY HOLDING INSTRUCTIONS IS REQUIRED.