

APP CRS	Rwy Idg	<b>4100</b>
<b>150°</b>	TDZE	<b>1231</b>
	Apt Elev	<b>1231</b>

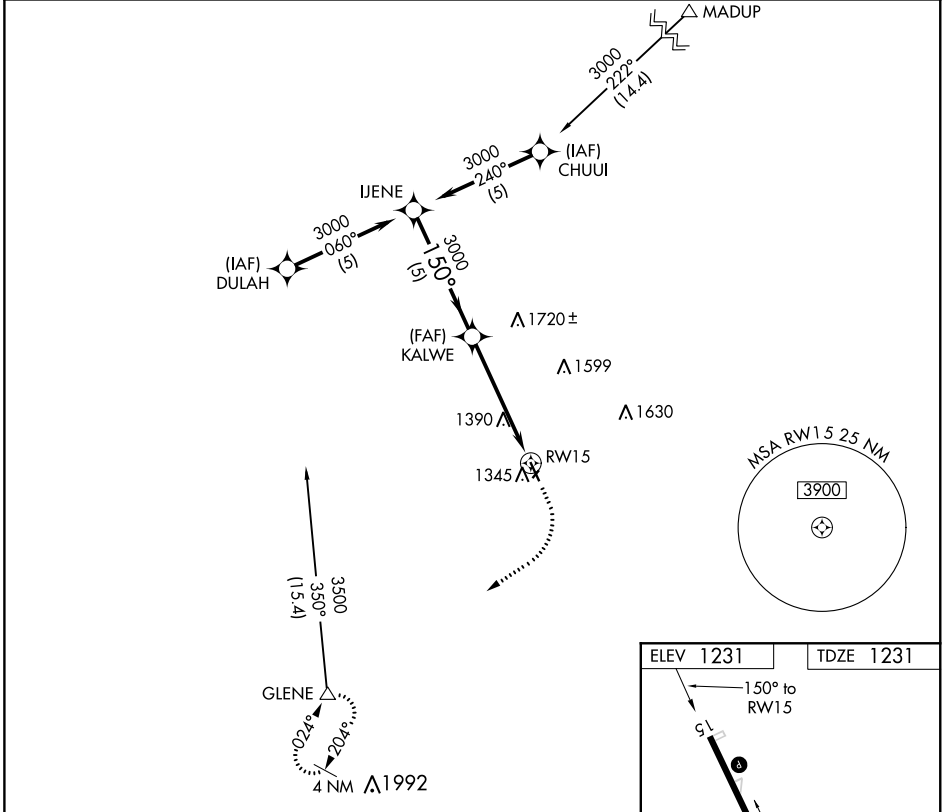
# GPS RWY 15

HARLAN MUNI (HNR)

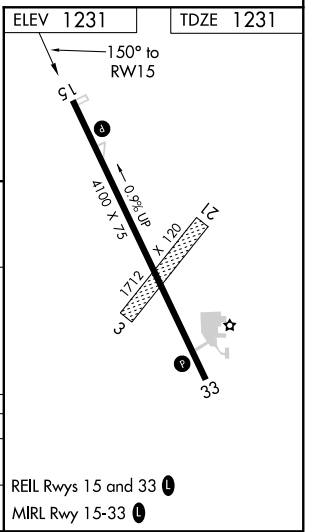
**NA** Procedure NA at night. Helicopter visibility reduction below 1 SM NA. Circling NA to Rwy 3 and 21.

MISSED APPROACH: Climb to 2000, then climbing right turn to 3600 direct GLENE and hold.

AWOS-3 <b>118.325</b>	OMAHA APP CON <b>124.5 263.0</b>	UNICOM <b>122.8 (CTAF)</b>
--------------------------	-------------------------------------	-------------------------------



	IJENE	KALWE	2000	3600	GLENE
Procedure Turn NA	3000	3000	↑	↷	△
	150°		VGSI and descent angle not coincident (VGSI Angle 3.00/TCH 40).		
	5 NM		3.27° TCH 34		
CATEGORY	A	B	C	D	
S-15	1780-1	549 (600-1)	NA		
CIRCLING	1780-1	549 (600-1)	NA		



NC-3, 22 APR 2021 to 20 MAY 2021

NC-3, 22 APR 2021 to 20 MAY 2021