

0200 TUF 91 01 0200 N0R 81 1-WN

DEPARTURE ROUTE DESCRIPTION

TAKEOFF RUNWAY 13R: Climb heading 128° to 720, then climbing left turn direct GERDD, then on depicted route to CHISM, thence

TAKEOFF RUNWAY 31L: Climb heading 308° to 720, then climbing left turn direct HETAT, then on depicted route to CHISM, thence

. . . . on (Transition). Maintain assigned altitude. Expect filed altitude 10 minutes after departure.

DESCHUTES TRANSITION [CHISM4.DSD]

JOGEN TRANSITION [CHISM4.JOGEN]

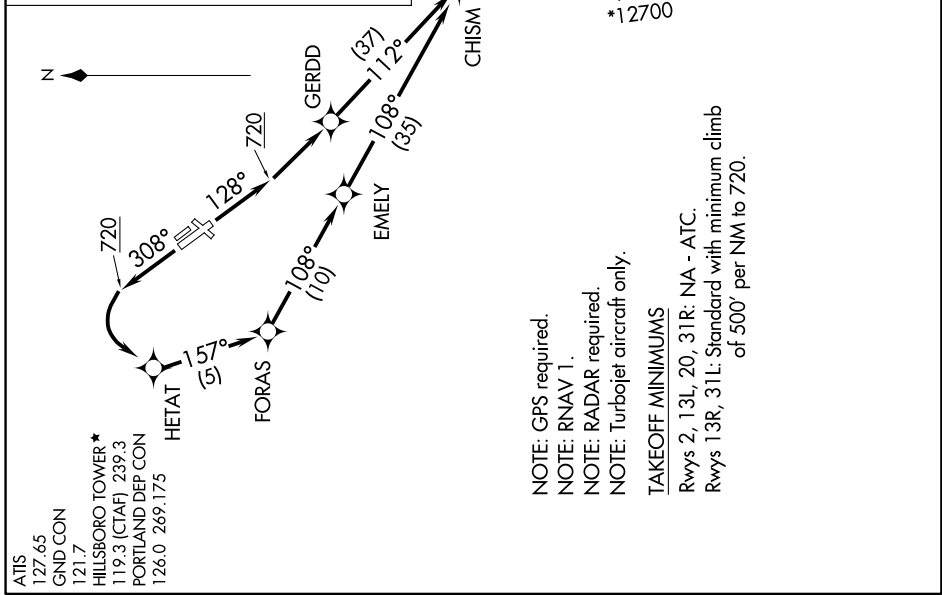
KIMBERLY TRANSITION [CHISM4.IMB]

PAWLI TRANSITION [CHISM4.PAWLI]

RIELY TRANSITION [CHISM4.RIELY]

SMIGE TRANSITION [CHISM4.SMIGE]

**TOP ALTITUDE:
ASSIGNED BY ATC**



NOTE: GPS required.

NOTE: RNAV 1.

NOTE: RADAR required.

NOTE: Turbojet aircraft only.

TAKEOFF MINIMUMS

Rwys 2, 13L, 20, 31R: NA - ATC.

Rwys 13R, 31L: Standard with minimum climb of 500' per NM to 720.

NOTE: Chart not to scale.

NW-1, 18 JUN 2020 to 16 JUL 2020