

| | | | |
|--|------------------------|-----------------------------|---|
| WAAS CH 56600 W11A | APP CRS 115° | Rwy Idg TDZE Apt Elev | 5500 632 633 |
|--|------------------------|-----------------------------|---|

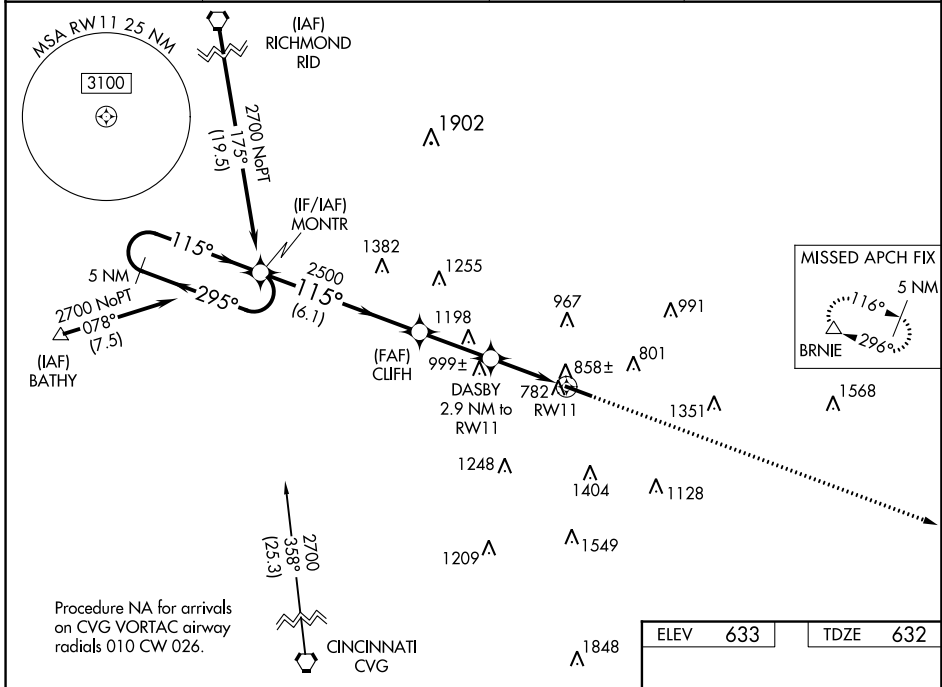
RNAV (GPS) RWY 11

BUTLER COUNTY RGNL-HOGAN FIELD (HAO)

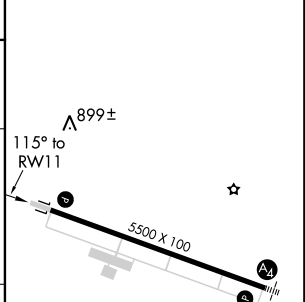
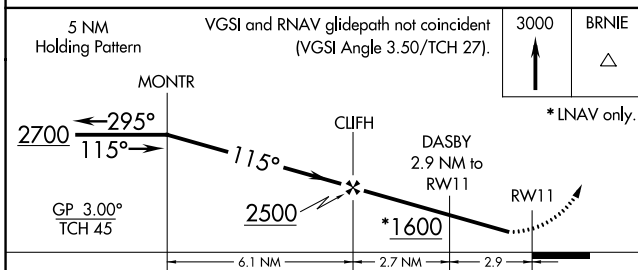
⚠ If local altimeter setting not received, use Cincinnati Muni Airport-Lunken Field altimeter setting and increase all DAs 59 feet and all MDAs 60 feet. Baro-VNAV NA when using Cincinnati Muni Airport-Lunken Field altimeter setting. For uncompensated Baro-VNAV systems, LNAV/VNAV NA below -16°C (4°F) or above 47°C (116°F). Visibility reduction by helicopters NA. DME/DME RNP-0.3 NA.

⚠ MISSED APPROACH: Climb to 3000 direct BRNIE and hold.

| | | | |
|------------------------|--|---------------------------|----------------------------------|
| ASOS 121.425 | CINCINNATI APP CON 121.0 257.725 | CLNC DEL 126.25 | UNICOM 123.05 (CTAF) ① |
|------------------------|--|---------------------------|----------------------------------|



| | |
|----------|----------|
| ELEV 633 | TDZE 632 |
|----------|----------|



| CATEGORY | A | B | C | D |
|--------------|--------------------|--------------------|----------------------|----------------------|
| LPV DA | | 998-1¼ | 366 (400-1¼) | |
| LNAV/VNAV DA | | 1108-1¾ | 476 (500-1¾) | |
| LNAV MDA | 1160-1 528 (600-1) | | 1160-1½ 528 (600-1½) | 1160-1¾ 528 (600-1¾) |
| CIRCLING | 1200-1 567 (600-1) | 1280-1 647 (700-1) | 1300-1¾ 667 (700-1¾) | 1320-2¼ 687 (700-2¼) |

MIRL Rwy 11-29 ①
REIL Rwy 11 and 29 ①

EC-2. 01 FEB 2018 to 01 MAR 2018

EC-2. 01 FEB 2018 to 01 MAR 2018