

(ECHO01.ECH00) 20086

ECHOO ONE DEPARTURE (RNAV)

AL-325 (FAA)

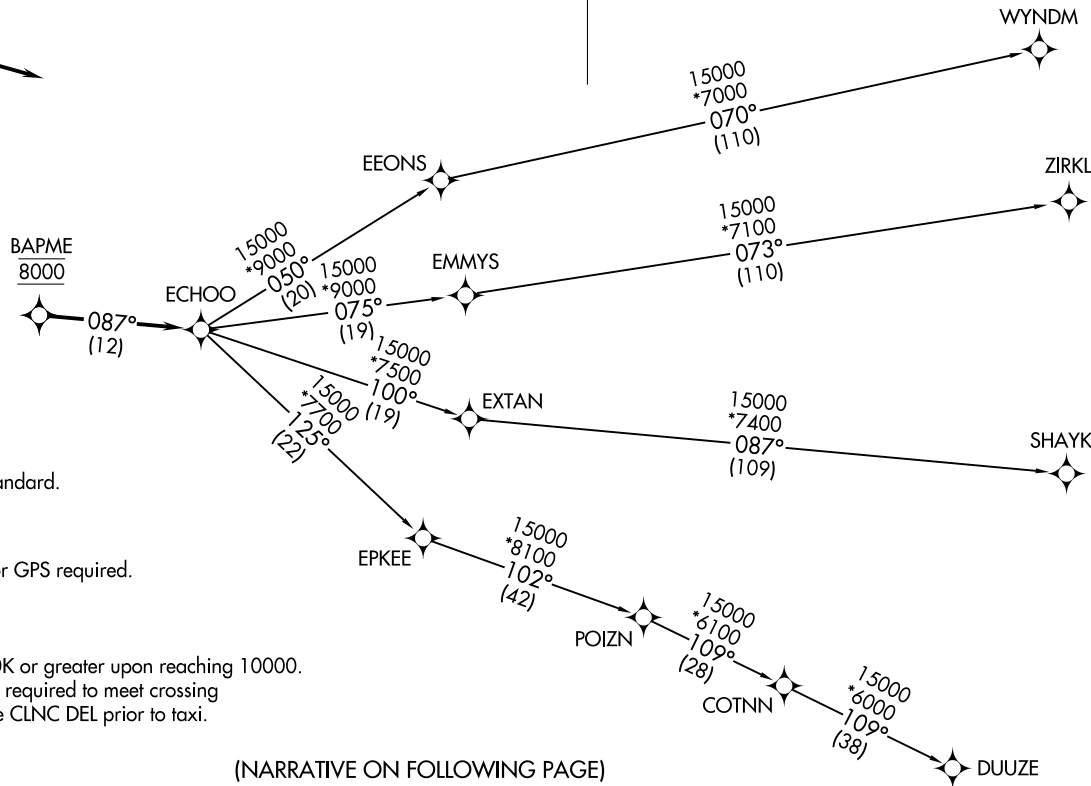
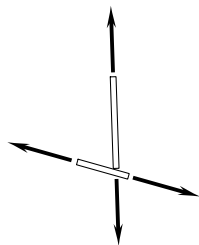
GREELEY-WEID COUNTY (GXY)
GREELEY, COLORADO

CLNC DEL 126.65
DENVER DEP CON 134.85 251.125

SW-1, 22 FEB 2024 to 21 MAR 2024

TOP ALTITUDE:
FL230

N



TAKEOFF MINIMUMS

Rwys 10, 17, 28, 35: Standard.

- NOTE: DME/DME/IRU or GPS required.
- NOTE: RNAV 1.
- NOTE: Turbojets only.
- NOTE: RADAR required.
- NOTE: Accelerate to 250K or greater upon reaching 10000.
If slower speed is required to meet crossing restrictions advise CLNC DEL prior to taxi.

NOTE: Chart not to scale.

(NARRATIVE ON FOLLOWING PAGE)

SW-1, 22 FEB 2024 to 21 MAR 2024

ECHOO ONE DEPARTURE (RNAV)

(ECHO01.ECH00) 20MAR20

GREELEY, COLORADO
GREELEY-WEID COUNTY (GXY)



DEPARTURE ROUTE DESCRIPTION

TAKEOFF RUNWAY 10: Climb on a heading between 292° CW 214° as assigned by ATC. Thence. . . .

TAKEOFF RUNWAY 17: Climb on a heading between 350° CW 212° as assigned by ATC. Thence. . . .

TAKEOFF RUNWAY 28: Climb on a heading between 294° CW 097° or between 097° CW 209° as assigned by ATC. Thence. . . .

TAKEOFF RUNWAY 35: Climb on a heading between 293° CW 169° as assigned by ATC. Thence. . . .

. . . .expect RADAR vectors to cross BAPME at 8000 then on track 087° to ECHOO, then on (transition) maintain FL230 or filed lower altitude. Expect higher filed altitude ten minutes after departure.

- DUUZE TRANSITION (ECHOO1.DUUZE)
- SHAYK TRANSITION (ECHOO1.SHAYK)
- WYNDM TRANSITION (ECHOO1.WYNDM)
- ZIRKL TRANSITION (ECHOO1.ZIRKL)