


WAAS CH 70320 W23A	APP CRS 227°	Rwy Idg TDZE 133 Apt Elev 133	5500
--	------------------------	---	-------------

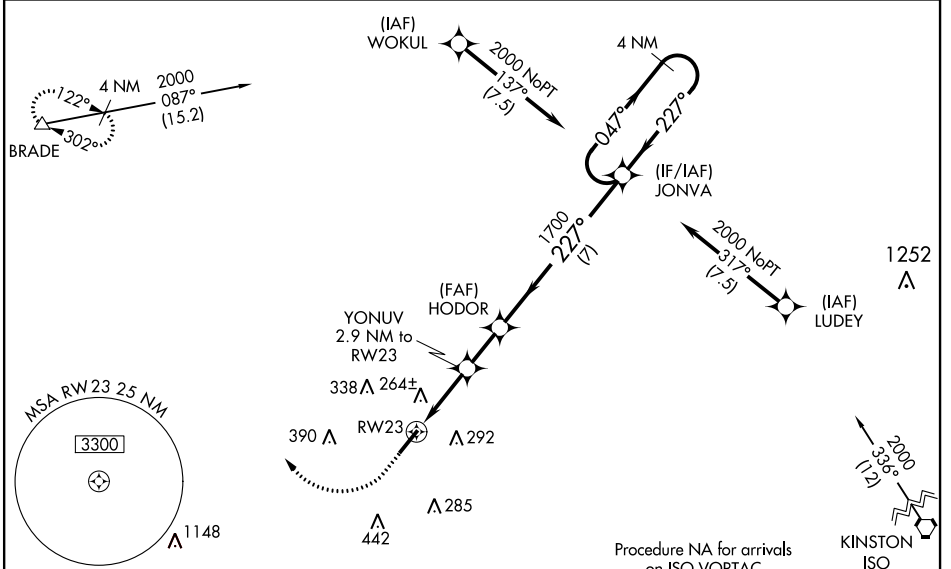
RNAV (GPS) RWY 23

WAYNE EXECUTIVE JETPORT (GWW)

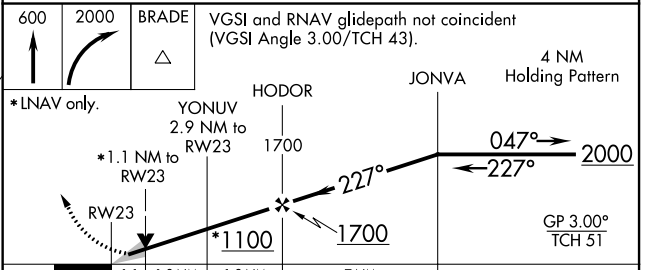
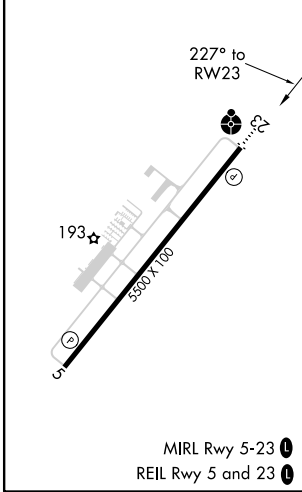
RNP APCH.
 ▼ Baro-VNAV NA when using Smithfield altimeter setting. For uncompensated Baro-VNAV systems, LNAV/VNAV NA below -15°C (5°F) or above 43°C (109°F). VDP NA with Smithfield altimeter setting. When local altimeter setting not received, use Smithfield altimeter setting and increase LPV DA to 387 feet, LNAV/VNAV DA to 499 feet and all MDA 60 feet; increase LNAV/VNAV visibility all Cats to 1 SM and LNAV visibility Cats C/D to 1½. For inop ALS when using Smithfield altimeter setting, increase LNAV/VNAV visibility all Cats to 1 SM and LNAV visibility Cats A/B to 1 SM and Cats C/D to 1¾ SM.

ODALS
 MISSED APPROACH: Climb to 600 then climbing right turn to 2000 direct BRADE and hold.

AWOS-3P 118.975	SEYMOUR JOHNSON APP CON * 123.7 290.9	UNICOM 122.7 (CTAF) 0
---------------------------	---	---------------------------------



ELEV 133	TDZE 133
----------	----------



CATEGORY	A	B	C	D
LPV DA		333-¾	200 (200-¾)	
LNAV/VNAV DA		445-⅞	312 (400-⅞)	
LNAV MDA	520-¾	387 (400-¾)	520-1	387 (400-1)
CIRCLING	580-1 447 (500-1)	600-1 467 (500-1)	600-1½ 467 (500-1½)	700-2 567 (600-2)

SE-2, 20 MAY 2021 to 17 JUN 2021

SE-2, 20 MAY 2021 to 17 JUN 2021