

NDB GUY <b>275</b>	APP CRS <b>177°</b>	Rwy Idg <b>5904</b>
		TDZE <b>3125</b>
		Apt Elev <b>3125</b>

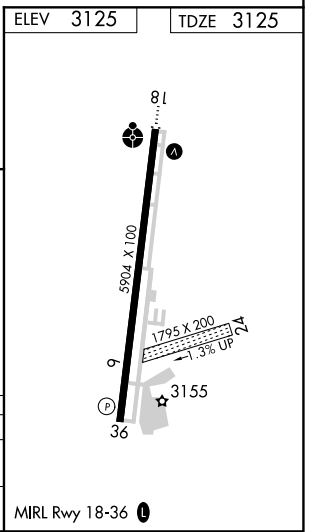
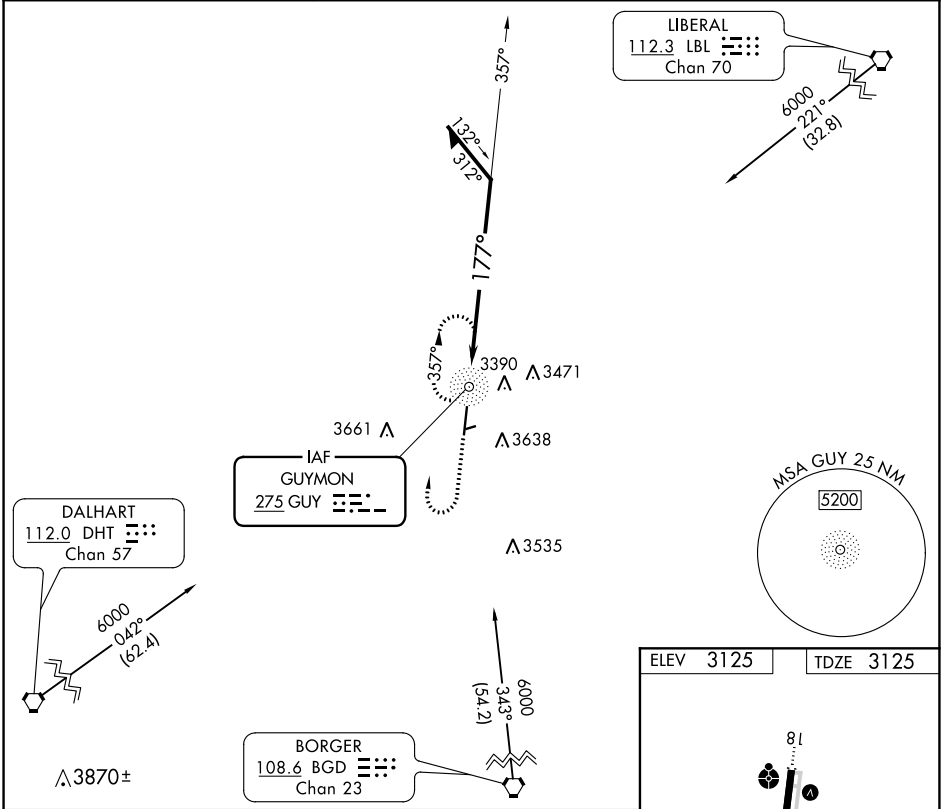
# NDB RWY 18

GUYMON MUNI (GUY)

**▽** Circling NA east of Rwy 18-36. When local altimeter setting not received, use Liberal altimeter setting and increase all MDA 120 feet, increase S-18 Cat A visibility ¼ SM; increase Circling Cats A and C ¼ SM. Circling NA to Rwy 6 and 24.

**ODALS** **MISSED APPROACH:** Climb to 5000 then right turn direct GUY NDB and hold.

ASOS <b>119.925</b>	KANSAS CITY CENTER <b>134.0 257.865</b>	UNICOM <b>122.7 (CTAF) 0</b>
------------------------	--	---------------------------------



CATEGORY	A	B	C	D
S-18	3900-1 775 (800-1)	3900-1¼ 775 (800-1¼)	3900-2½ 775 (800-2½)	NA
CIRCLING	3900-1 775 (800-1)	3900-1¼ 775 (800-1¼)	3900-2½ 775 (800-2½)	NA

CATEGORY	A	B	C	D
S-18	3900-1 775 (800-1)	3900-1¼ 775 (800-1¼)	3900-2½ 775 (800-2½)	NA
CIRCLING	3900-1 775 (800-1)	3900-1¼ 775 (800-1¼)	3900-2½ 775 (800-2½)	NA

SC-1, 17 JUN 2021 to 15 JUL 2021

SC-1, 17 JUN 2021 to 15 JUL 2021