

# RNAV (GPS) RWY 26L

GERALD R FORD INTL (G.R.R.)

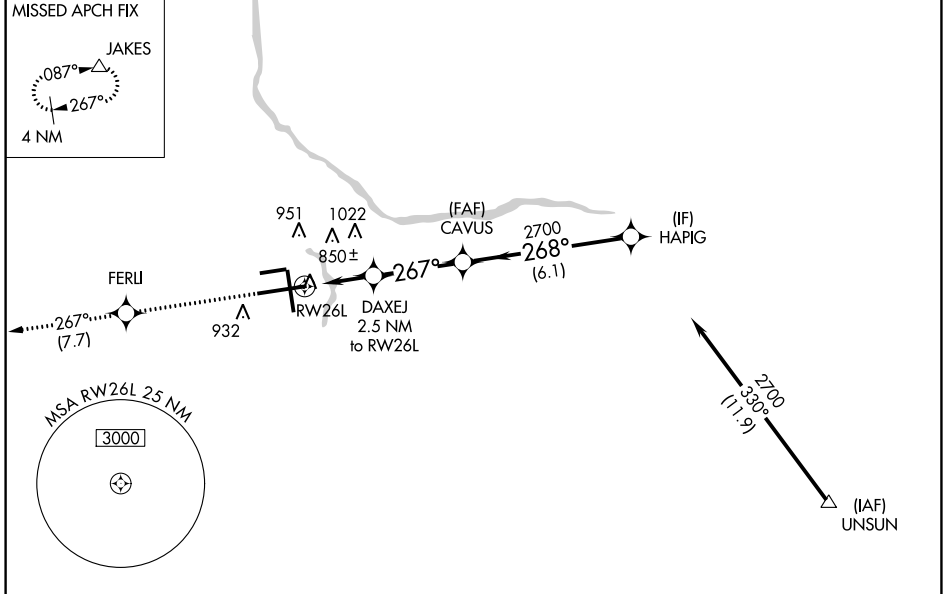
WAAS CH <b>86713</b> <b>W26B</b>	APP CRS <b>267°</b>	Rwy Idg <b>10000</b> TDZE <b>790</b> Apt Elev <b>794</b>
--	------------------------	--

**ASR** For uncompensated Baro-VNAV systems, LNAV/VNAV NA below -16°C (4°F) or above 54°C (130°F). DME/DME RNP-0.3 NA. For inoperative ALS, increase LNAV/VNAV Cat D visibility to RVR 5000.  
\*\* RVR 1800 authorized with use of FD or AP or HUD to DA.

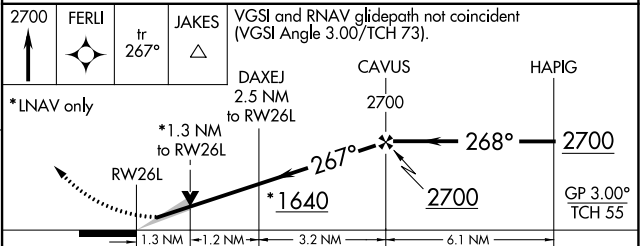
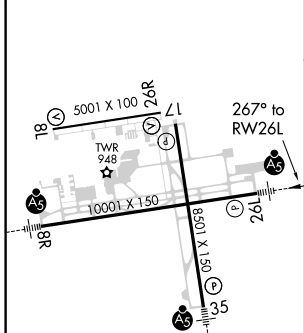
**MALSRL**

**MISSED APPROACH:**  
Climb to 2700 direct FERLI and track 267° to JAKES and hold.

ATIS <b>118.725</b>	GRAND RAPIDS APP CON * <b>128.4 257.6</b>	GRAND RAPIDS TOWER * <b>135.65 (CTAF) 339.8</b>	GND CON <b>121.8</b>	CLNC DEL <b>119.3</b>	UNICOM <b>122.95</b>
------------------------	--	--	-------------------------	--------------------------	-------------------------



ELEV 794	<b>D</b>	TDZE 790
----------	----------	----------



CATEGORY	A	B	C	D
LPV DA **	990/24 200 (200-1/2)			
LNAV/VNAV DA	1114/24 324 (400-1/2)			1114/40 324 (400-3/4)
LNAV MDA	1280/24	490 (500-1/2)	1280/40 490 (500-3/4)	1280/50 490 (500-1)
<b>C</b> CIRCLING	1280-1	486 (500-1)	1340-1 1/2 546 (600-1 1/2)	1360-2 566 (600-2)

EC-1, 29 MAR 2018 to 26 APR 2018

EC-1, 29 MAR 2018 to 26 APR 2018