


WAAS CH 60916 W29A	APP CRS 286°	Rwy Idg TDZE Apt Elev	7504 122 151
--	------------------------	-----------------------------	---

RNAV (GPS) RWY 29

GAINESVILLE RGNL (G.V.)

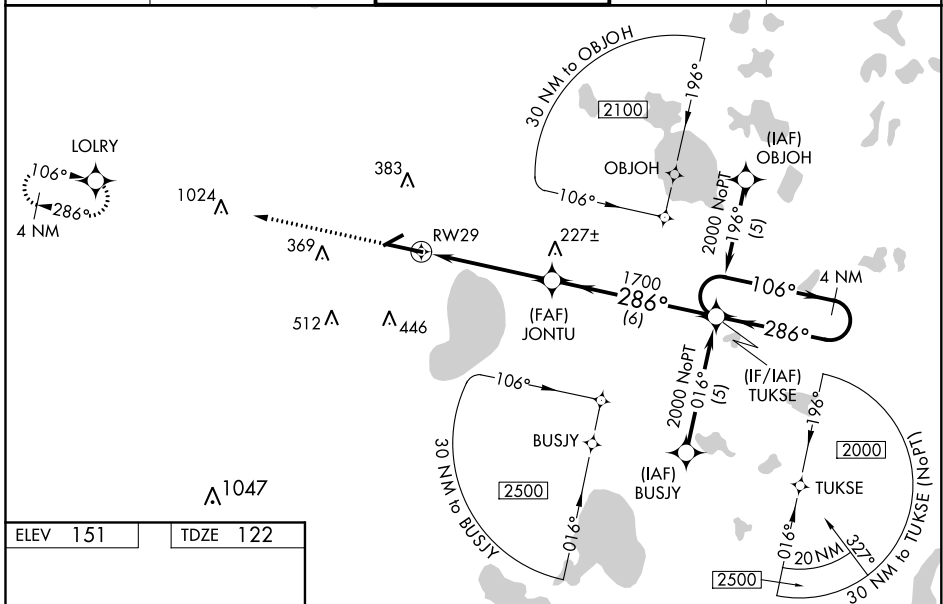
⚠ DME/DME RNP-0.3 NA. For inoperative MALS, increase LPV all Cats visibility to RVR 5000 and increase LNAV Cat D visibility to RVR 6000. For inoperative MALS using Ocala Intl-Jim Taylor Fld altimeter setting, increase LPV all Cats visibility to 1½ mile. When local altimeter setting not received, use Ocala Intl-Jim Taylor Fld altimeter setting and increase LPV DA to 501 feet and all Cats visibility to RVR 5000; increase LNAV/VNAV DA to 561 feet and all Cats visibility to RVR 5000; increase all MDAs 100 feet and increase LNAV Cat C visibility to RVR 4000; increase Circling Cat C visibility ¼ SM and Circling Cat D ½ SM. For uncompensated Baro-VNAV systems, LNAV/VNAV NA below -15°C (5°F) or above 48°C (118°F). Baro-VNAV and VDP NA when using Ocala Intl-Jim Taylor Fld altimeter setting. When VGSI inoperative, Circling Rwy 25 NA at night.

MALS

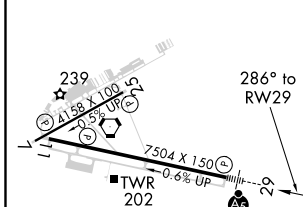


MISSED APPROACH:
Climb to 2100 direct LOLRY and hold.

ATIS 127.15	JACKSONVILLE APP CON 118.175 338.25	GAINESVILLE TOWER★ 119.55 (CTAF) 0 353.7	GND CON 121.7	UNICOM 122.95
-----------------------	---	--	-------------------------	-------------------------



ELEV 151	TDZE 122
----------	----------



2100	LOLRY	VGSI and RNAV glidepath not coincident (VGSI Angle 3.00/TCH 55).	TUKSE	4 NM Holding Pattern
*LNAV Only		*1 NM to RWY 29		
RWY 29		JONTU	286° → 106° → 2000	
1 NM		3.8 NM	← 286°	
		6 NM	GP 3.00° TCH 50	

CATEGORY	A	B	C	D
LPV DA		420/24	298 (300-½)	
LNAV/VNAV DA		480/40	358 (400-¾)	
LNAV MDA		500/24	378 (400-½)	500/50 378 (400-1)
CIRCLING	620-1 469 (500-1)	700-1 549 (600-1)	760-1¾ 609 (700-1¾)	820-2 669 (700-2)

REIL Rwy 11
MIRL Rwy 7-25
HIRL Rwy 11-29

SE-3, 15 JUL 2021 to 12 AUG 2021

SE-3, 15 JUL 2021 to 12 AUG 2021