

APP CRS	Rwy Idg	4158
065°	TDZE	151
	Apt Elev	151

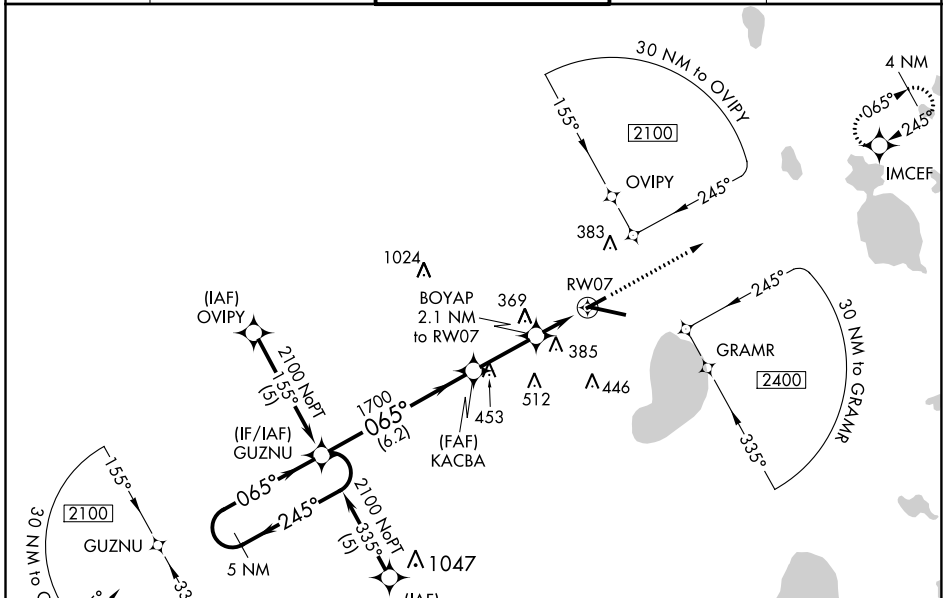
RNAV (GPS) RWY 7

GAINESVILLE RGNL (GNTV)

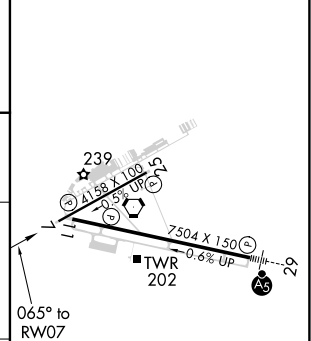
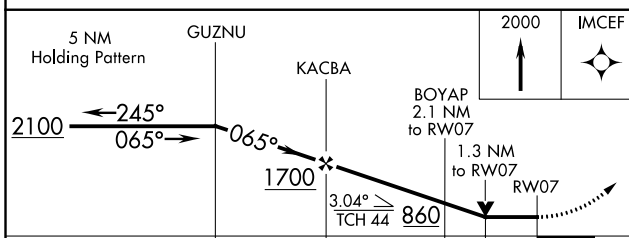
▼ DME/DME RNP-0.3 NA. Visibility reduction by helicopters NA. VDP NA when using Ocala Intl-Jim Taylor Fld altimeter setting. When local altimeter setting not received, use Ocala Intl-Jim Taylor Fld altimeter setting; increase all MDAs 100 feet and increase LNAV Cat C/D and Circling Cat C visibility ¼ SM and Circling Cat D ½ SM. When VGSI inoperative, Circling Rwy 25 NA at night.

MISSED APPROACH: Climb to 2000 direct IMCEP and hold.

ATIS 127.15	JACKSONVILLE APP CON 118.175 338.25	GAINESVILLE TOWER★ 119.55(CTAF) 0 353.7	GND CON 121.7	UNICOM 122.95
-----------------------	-----------------------------------------------	---------------------------------------------------	-------------------------	-------------------------



ELEV 151	TDZE 151
----------	----------



CATEGORY	A	B	C	D
LNAV MDA	620-1 469 (500-1)	620-1 469 (500-1 1/4)	620-1 1/2 469 (500-1 1/4)	620-1 1/2 469 (500-1 1/2)
CIRCLING	620-1 469 (500-1)	700-1 549 (600-1)	760-1 3/4 609 (700-1 3/4)	820-2 669 (700-2)

REIL Rwy 11
MIRL Rwy 7-25
HIRL Rwy 11-29

SE-3, 09 SEP 2021 to 07 OCT 2021

SE-3, 09 SEP 2021 to 07 OCT 2021