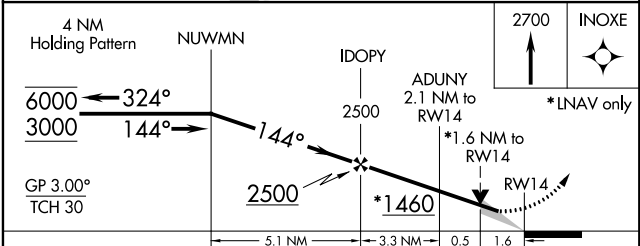
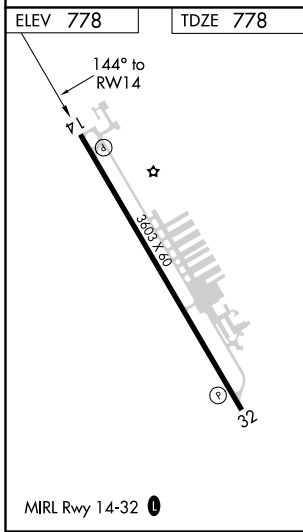
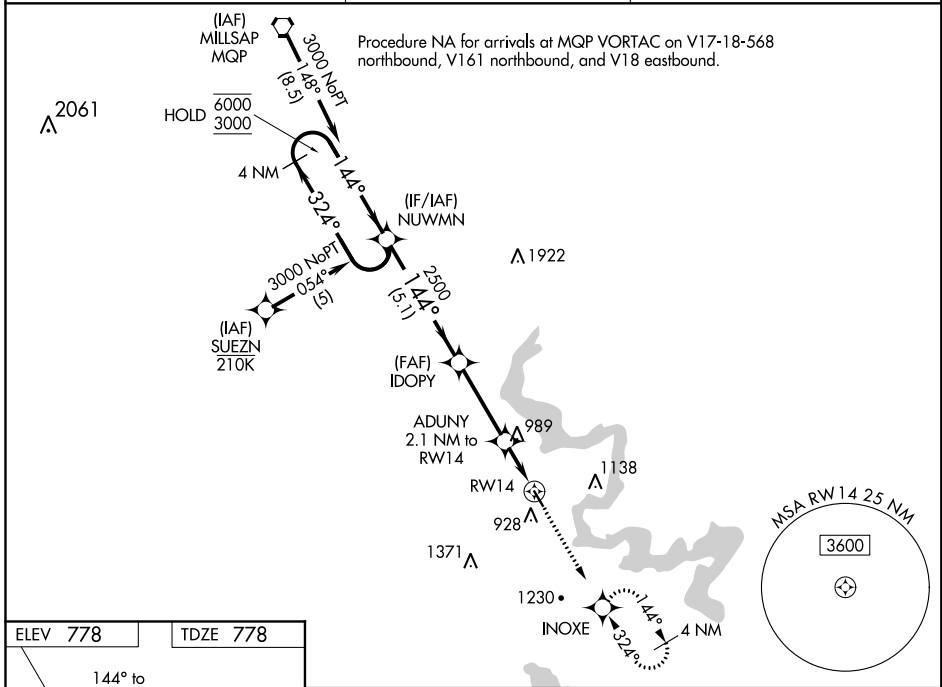


WAAS CH 99618 W14A	APP CRS 144°	Rwy Idg 3603 TDZE 778 Apt Elev 778
--	------------------------	---

RNAV (GPS) RWY 14

GRANBURY RGNL (GDJ)

RNP APCH.		MISSED APPROACH: Climb to 2700 direct INOXE and hold, continue climb-in-hold to 2700.
▼ ▲	Circling Rwy 32 NA at night. For uncompensated Baro-VNAV systems, LNAV/VNAV NA below -16°C or above 54°C.	
AWOS-3 118.925	FORT WORTH CENTER 127.15 314.0	UNICOM 123.0 (CTAF) 0



CATEGORY	A	B	C	D
LPV DA	1036- ³ / ₄ 258 (300- ³ / ₄)			NA
LNAV/VNAV DA	1109-1 331 (400-1)			NA
LNAV MDA	1300-1	522 (600-1)	1300-1 ¹ / ₂ 522 (600-1 ¹ / ₂)	NA
C CIRCLING	1340-1 562 (600-1)	1380-1 602 (700-1)	1440-1 ³ / ₄ 662 (700-1 ³ / ₄)	NA

SC-2, 20 MAY 2021 to 17 JUN 2021

SC-2, 20 MAY 2021 to 17 JUN 2021