

LOC/DME I-FYJ <b>109.55</b> Chan 32 (Y)	APP CRS <b>094°</b>	Rwy Ldg TDZE Apt Elev	<b>5000</b> <b>14</b> <b>20</b>
---	------------------------	-----------------------------	---------------------------------------

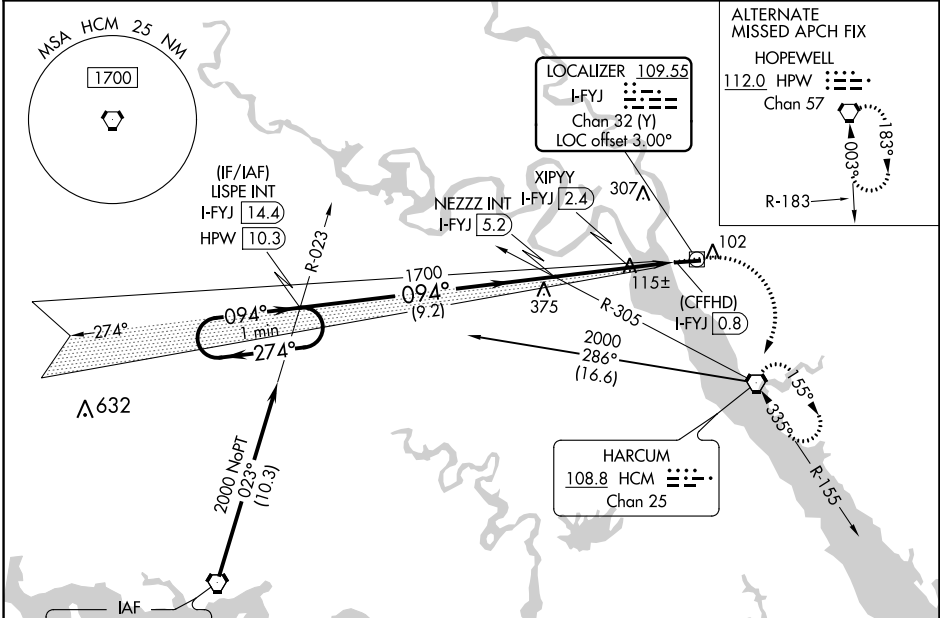
# LOC RWY 10

MIDDLE PENINSULA RGNL (F'YJ)

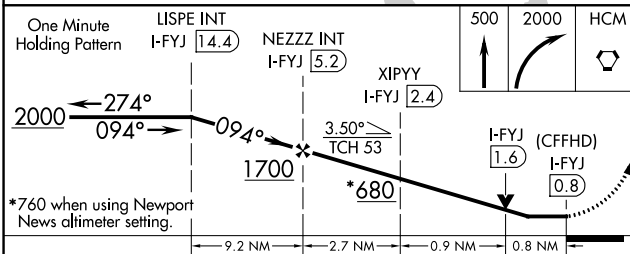
**NA** When local altimeter setting not received, use Newport News altimeter setting and increase all MDA 80 feet and increase S-10 Cat B and Circling Cat B visibility ¼ SM. VDP NA when using Newport News altimeter setting.

**MISSED APPROACH:** Climb to 500 then climbing right turn to 2000 direct HCM VORTAC and hold, continue climb-in-hold to 2000.

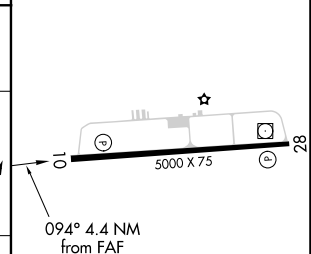
AWOS-3 <b>132.825</b>	POTOMAC APP CON <b>126.4 282.375</b>	UNICOM <b>123.0 (CTAF) 0</b>
--------------------------	---	---------------------------------



Procedure NA for arrivals on HPW VORTAC airway radials 323 CW 025.



ELEV 20	TDZE 14
---------	---------



CATEGORY	A	B	C	D
S-10	680-1	666 (700-1)		NA
<b>C</b> CIRCLING	680-1	660 (700-1)		NA
XIPYY FIX MINIMUMS				
S-10	380-1	366 (400-1)		NA
<b>C</b> CIRCLING	480-1 460 (500-1)	620-1 600 (600-1)		NA

MIRL Rwy 10-28	REIL Rws 10 and 28				
FAF to MAP 4.4 NM					
Knots	60	90	120	150	180
Min:Sec	4:24	2:56	2:12	1:46	1:28

NE-3, 22 APR 2021 to 20 MAY 2021

NE-3, 22 APR 2021 to 20 MAY 2021