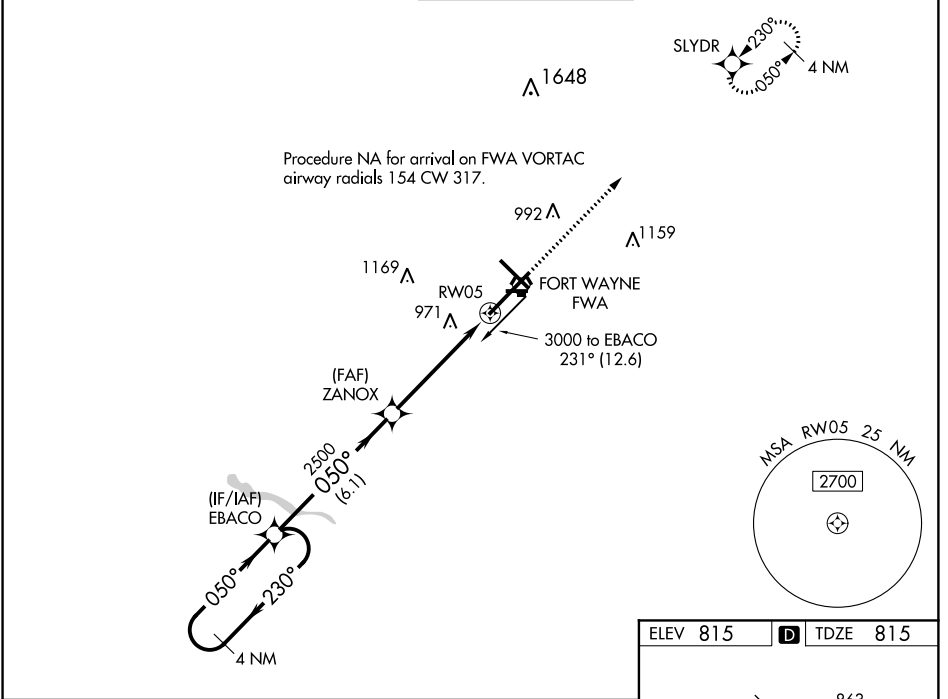


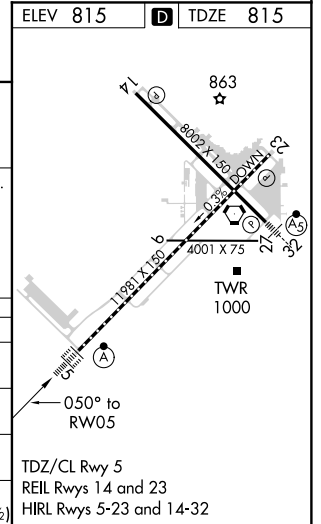
WAAS CH 93609 W05A	APP CRS 050°	Rwy Idg 11981 TDZE 815 Apt Elev 815
--	------------------------	--

RNAV (GPS) RWY 5
FORT WAYNE INTL (FWA)

<p>⚠ For uncompensated Baro-VNAV systems, procedure NA below -16°C (4°F) or above 47°C (116°F). DME/DME RNP-0.3 NA. For inop ALS, increase LPV Cat E visibility to RVR 4000, LNAV/VNAV all Cats visibility to 1½ SM and LNAV Cat C/D/E visibility to 1¾ SM.</p>	<p>ALSF-2 </p>		<p>MISSED APPROACH: Climb to 3000 direct SLYDR and hold.</p>	
	<p>ATIS 121.25 360.825</p>	<p>FORT WAYNE APP CON 127.2 284.6</p>	<p>FORT WAYNE TOWER 119.1 269.325</p>	<p>GND CON 121.9 348.6</p>



4 NM Holding Pattern		EBACO			ZANOX		RW05		3000	SLYDR
3000		← 230°		→ 050°		050°		2500	* LNAV only.	
GP 3.00° TCH 55		6.1 NM		3.7 NM		1.4 NM				
CATEGORY	A	B	C	D	E					
LPV DA	1065/18 250 (300-½)									
LNAV/VNAV DA	1275/60 460 (500-1¼)									
LNAV MDA	1300/24	485 (500-½)	1300/50		485 (500-1)					
C CIRCLING	1300-1	485 (500-1)	1420-1¾ 605 (700-1¾)	1520-2¼ 705 (800-2¼)	1520-2½ 705 (800-2½)					



EC-2, 10 OCT 2019 to 07 NOV 2019

EC-2, 10 OCT 2019 to 07 NOV 2019