

APP CRS 272°	Rwy Idg 3148 TDZE 1424 Apt Elev 1430
------------------------	---

RNAV (GPS) RWY 27

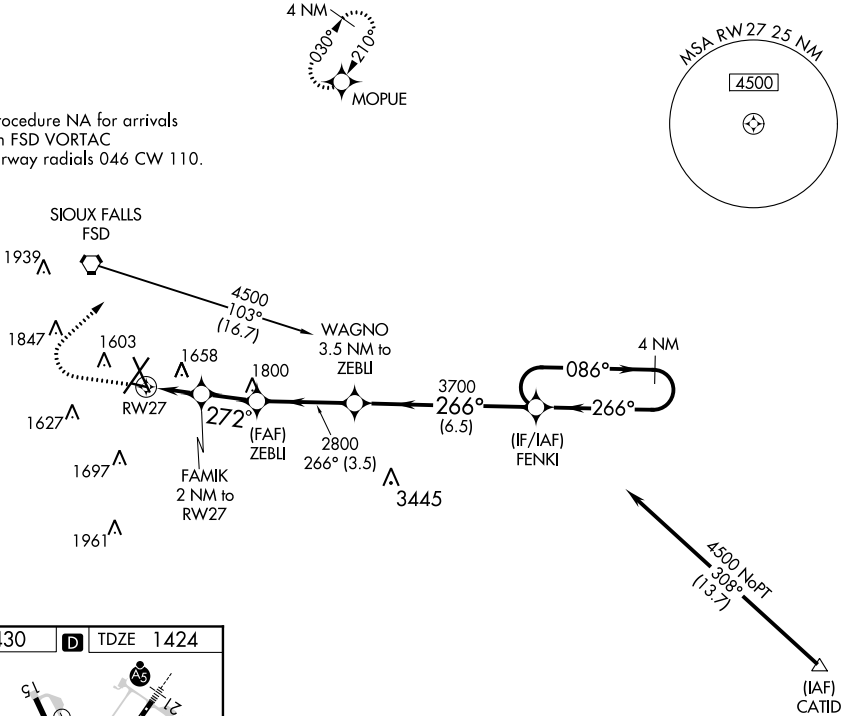
JOE FOSS FIELD (FSD)

RNP APCH.
ASR Rwy 27 helicopter visibility reduction below 3/4 SM NA.

MISSED APPROACH: Climb to 2500, then climbing right turn to 4000 direct MOPIUE WP and hold.

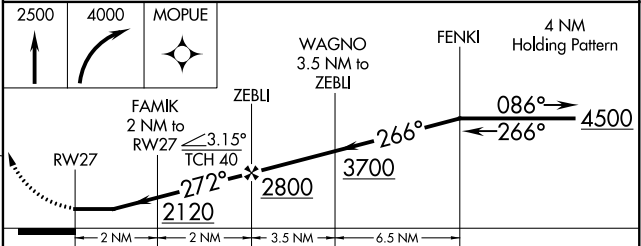
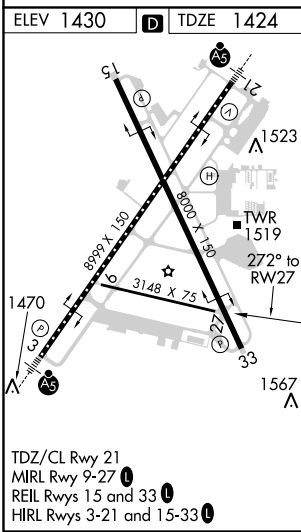
ATIS 126.6	SIoux FALLS APP CON* 125.8 284.725	SIoux FALLS TOWER* 118.3 (CTAF) 257.8	GND CON 121.9 348.6	UNICOM 122.95
----------------------	--	---	-------------------------------	-------------------------

Procedure NA for arrivals on FSD VORTAC airway radials 046 CW 110.



NC-1, 18 JUL 2019 to 15 AUG 2019

NC-1, 18 JUL 2019 to 15 AUG 2019



CATEGORY	A	B	C	D
LNNAV MDA	1960-1	536 (600-1)		NA
CIRCLING	1980-1	550 (600-1)		NA