


WAAS CH <b>40009</b> <b>W24A</b>	APP CRS <b>236°</b>	Rwy Idg TDZE Apt Elev	<b>9001</b> <b>66</b> <b>66</b>
--	------------------------	-----------------------------	---------------------------------------

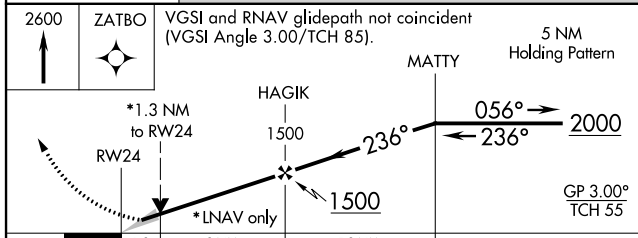
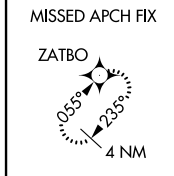
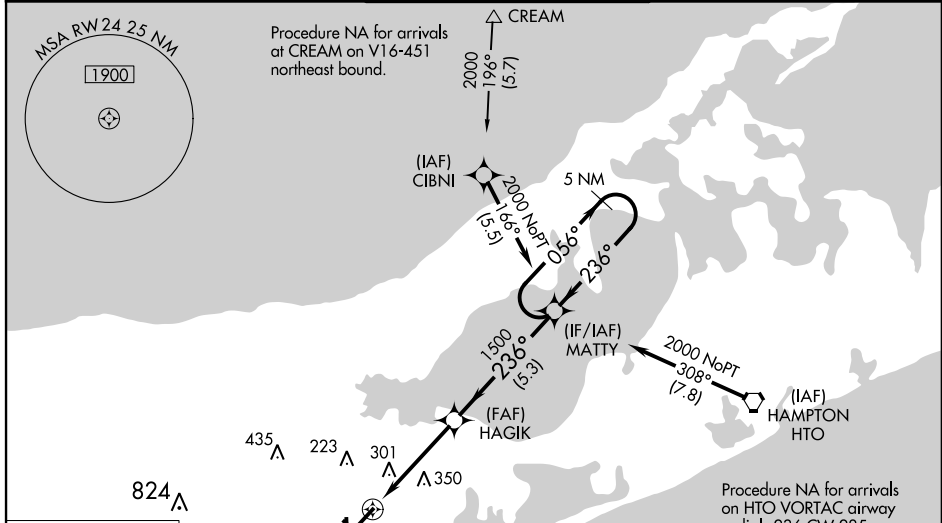
# RNAV (GPS) RWY 24

FRANCIS S GABRESKI (FOK)

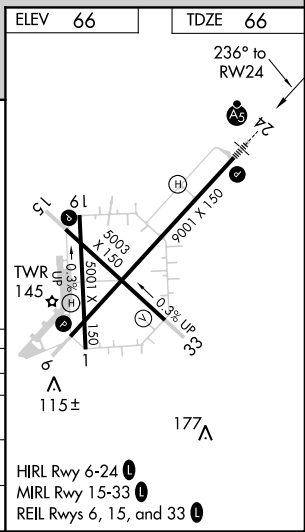
**⚠** For uncompensated Baro-VNAV systems, LNAV/VNAV NA below -15°C (5°F) or above 43°C (109°F). DME/DME RNP-0.3 NA. When local altimeter setting not received, use Shirley altimeter setting: increase LPV DA to 293; increase LNAV/VNAV DA to 632 and LNAV/VNAV all Cats visibility 1/8 mile; increase all MDA 40 feet and Circling Cat D visibility 1/4 mile. Baro-VNAV and VDP NA when using Shirley altimeter setting. Circling Rwy 15 NA at night.

**MALS**  **MISSED APPROACH:** Climb to 2600 direct ZATBO and hold.

ASOS <b>119.925</b>	NEW YORK APP CON <b>125.975 343.65</b>	SUFFOLK COUNTY TOWER * <b>125.3 (CTAF) 236.6</b>	GND CON <b>121.8 225.4</b>	UNICOM <b>122.95</b>
------------------------	---	---	-------------------------------	-------------------------



CATEGORY	A	B	C	D
LPV DA		266-1/2	200 (200-1/2)	
LNAV/VNAV DA		605-1 3/8	539 (600-1 3/8)	
LNAV MDA	560-1/2 494 (500-1/2)		560-1 494 (500-1)	
CIRCLING	600-1 534 (600-1)	620-1 554 (600-1)	620-1 554 (600-1/2)	700-2 634 (700-2)



NE-2: 06 DEC 2018 to 03 JAN 2019

NE-2: 06 DEC 2018 to 03 JAN 2019