

PLAINS NINE DEPARTURE (PLAIN9.DEN) 13SEP18  
FORT COLLINS/LOVELAND, COLORADO  
NORTHERN COLORADO RGNI (FNTL)

DENVER DEP CON  
134.85 251.125

**TOP ALTITUDE:  
ASSIGNED BY ATC**

AKRON  
114.4 AKO  
Chan 91  
N40°09.33'-W103°10.78'  
L-10, H-5

ASHBY  
N40°19.03'  
W102°00.09'  
L-10, H-5

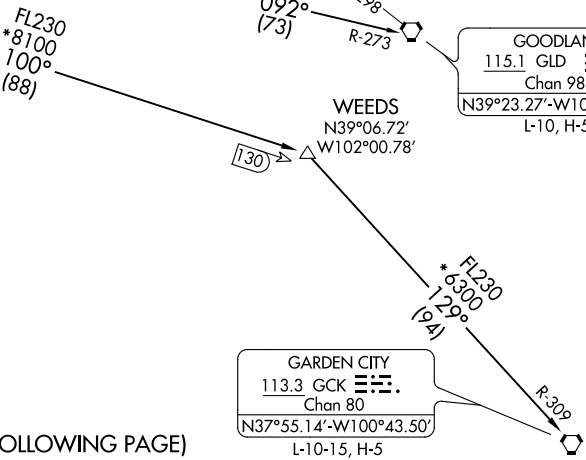
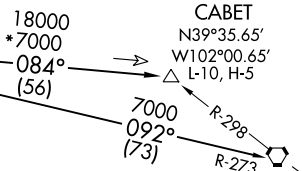
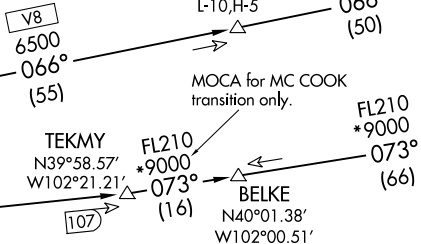
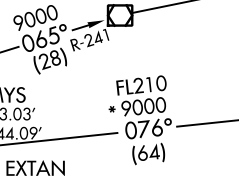
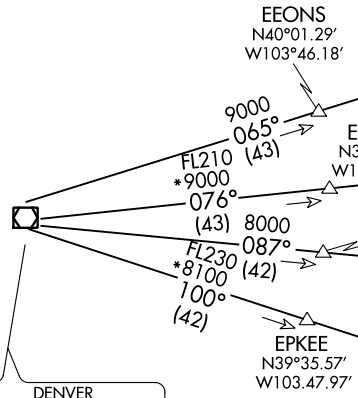
HAYES CENTER  
117.7 HCT  
Chan 124  
N40°27.24'-W100°55.41'  
L-10, H-5

MC COOK  
115.3 MCK  
Chan 100  
N40°12.23'-W100°35.65'  
L-10, H-5

GOODLAND  
115.1 GLD  
Chan 98  
N39°23.27'-W101°41.54'  
L-10, H-5

GARDEN CITY  
113.3 GCK  
Chan 80  
N37°55.14'-W100°43.50'  
L-10-15, H-5

THURMAN  
112.9 TXC  
Chan 76  
N39°41.90'-W103°12.90'  
L-10, H-5



DENVER  
117.9 DEN  
Chan 126  
N39°48.75'-W104°39.64'

TAKEOFF MINIMUMS  
Rwys 6, 24: NA - VFR Runway.  
Rwys 15, 33: Standard.

NOTE: RADAR required.

NOTE: Chart not to scale.

(NARRATIVE ON FOLLOWING PAGE)

PLAINS NINE DEPARTURE (PLAIN9.DEN) 18256  
AL-5677 (FAA)  
NORTHERN COLORADO RGNI (FNTL)  
FORT COLLINS/LOVELAND, COLORADO



DEPARTURE ROUTE DESCRIPTION

TAKEOFF RUNWAY 15: Climb to assigned altitude and heading between 180° CCW 350° from end of runway. Thence. . . .

TAKEOFF RUNWAY 33: Climbing right turn to assigned altitude and heading between 350° CW 150° from DER. Thence. . . .

. . . .RADAR vectors to assigned route. Expect filed altitude 10 minutes after departure.

LOST COMMUNICATIONS: If no transmissions are received within one minute after departure, maintain assigned heading until 7000 feet, then climb to filed altitude via direct DEN VOR/DME, thence via assigned transition. If filed altitude is above 10000 feet, cross DEN VOR/DME at or above 11000 feet.

AKRON TRANSITION (PLAIN9.AKO): From over DEN VOR/DME on DEN R-065 and AKO R-241 to AKO VOR/DME.

ASHBY TRANSITION (PLAIN9.ASHBY): From over DEN VOR/DME on DEN R-065 and AKO R-241 to AKO VOR/DME, then on AKO R-066 and HCT R-250 to ASHBY.

BELKE TRANSITION (PLAIN9.BELKE): From over DEN VOR/DME on DEN R-076 and MCK R-253 to BELKE INT.

CABET TRANSITION (PLAIN9.CABET): From over DEN VOR/DME on DEN R-087 and TXC R-264 to TXC VORTAC, then on TXC R-084 to CABET.

GARDEN CITY TRANSITION (PLAIN9.GCK): From over DEN VOR/DME on DEN R-100 and GCK R-309 to GCK VORTAC.

GOODLAND TRANSITION (PLAIN9.GLD): From over DEN VOR/DME on DEN R-087 and TXC R-264 to TXC VORTAC, then on TXC R-092 and GLD R-273 to GLD VORTAC.

HAYES CENTER TRANSITION (PLAIN9.HCT): From over DEN VOR/DME on DEN R-065 and AKO R-241 to AKO VOR/DME, then on AKO R-066 and HCT R-250 to HCT VORTAC.

MCCOOK TRANSITION (PLAIN9.MCK): From over DEN VOR/DME on DEN R-076 to TEKMY, then on MCK R-253 to MCK VOR/DME.

THURMAN TRANSITION (PLAIN9.TXC): From over DEN VOR/DME on DEN R-087 and TXC R-264 to TXC VORTAC.

WEEDS TRANSITION (PLAIN9.WEEDS): From over DEN VOR/DME on DEN R-100 to WEEDS.

SW-1, 28 MAR 2019 to 25 APR 2019

SW-1, 28 MAR 2019 to 25 APR 2019