

LOC/DME I-CNA	APP CRS	Rwy Idg	<b>11050</b>
<b>109.1</b>	<b>020°</b>	TDZE	<b>439</b>
Chan <b>28</b>		Apt Elev	<b>439</b>

# ILS RWY 2L (CAT II & III)

FAIRBANKS INTL (FAI) (PAFA)

DME Required.

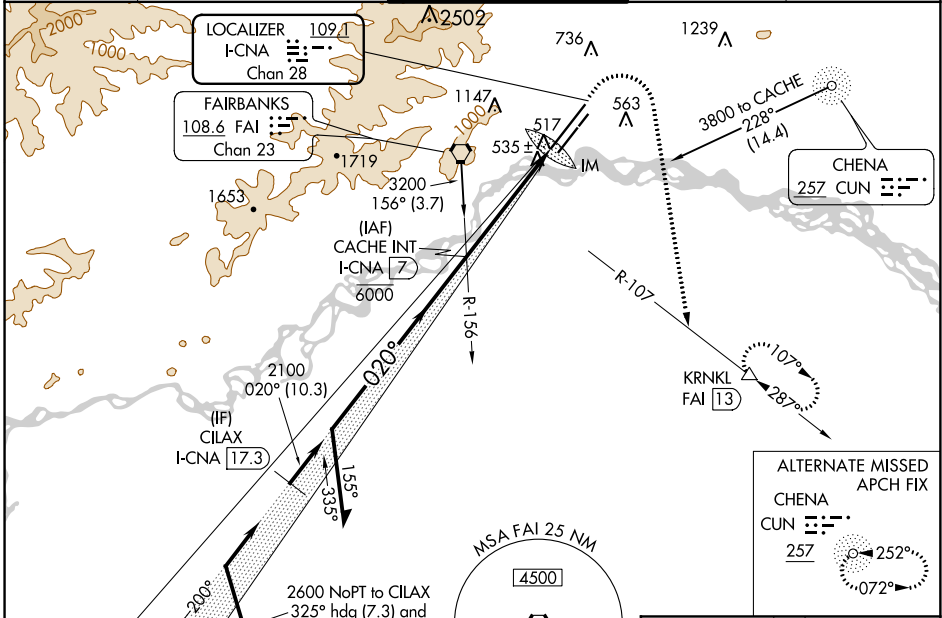
**▼** CAT II: RVR 1000 authorized with specific OPSPEC, MSPEC, or LOA approval and use of autoland or HUD to touchdown.

**▲** -45°C

ALSF-2

**MISSED APPROACH:** Climb to 900 then climbing right turn to 5000 on heading 170° and FAI VORTAC R-107 to KRNL/FAI 13 DME and hold, continue climb-in-hold to 5000.

ATIS	FAIRBANKS APP CON	FAIRBANKS TOWER	GND CON	CLNC DEL
<b>124.4</b>	<b>125.35 363.2</b>	<b>118.3 257.8</b>	<b>121.9</b>	<b>127.6</b>



**ALTERNATE MISSED APCH FIX**

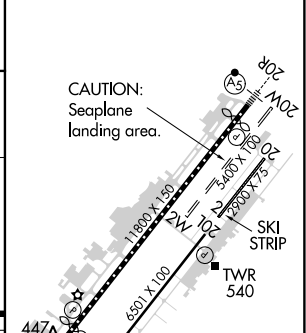
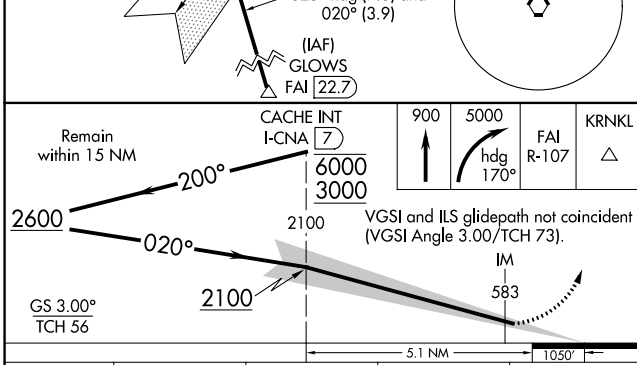
CHENA 257 CUN

257

252°

072°

ELEV 439	<b>D</b> TDZE 439
----------	-------------------



CATEGORY	A	B	C	D
S-ILS 2L	CAT II RA 104/12 100 DA 539			
S-ILS 2L	CAT III RVR 06			

## CATEGORY II & III ILS - SPECIAL AIRCREW & AIRCRAFT CERTIFICATION REQUIRED

REIL Rwy 20L  
TDZ/CL Rwy 2L  
MIRL Rwy 2R-20L  
HIRL Rwy 2L-20R

AK, 08 NOV 2018 to 03 JAN 2019

AK, 08 NOV 2018 to 03 JAN 2019